



Chipsmall Limited consists of a professional team with an average of over 10 year of expertise in the distribution of electronic components. Based in Hongkong, we have already established firm and mutual-benefit business relationships with customers from,Europe,America and south Asia,supplying obsolete and hard-to-find components to meet their specific needs.

With the principle of “Quality Parts,Customers Priority,Honest Operation,and Considerate Service”,our business mainly focus on the distribution of electronic components. Line cards we deal with include Microchip,ALPS,ROHM,Xilinx,Pulse,ON,Everlight and Freescale. Main products comprise IC,Modules,Potentiometer,IC Socket,Relay,Connector.Our parts cover such applications as commercial,industrial, and automotives areas.

We are looking forward to setting up business relationship with you and hope to provide you with the best service and solution. Let us make a better world for our industry!



Contact us

Tel: +86-755-8981 8866 Fax: +86-755-8427 6832

Email & Skype: info@chipsmall.com Web: www.chipsmall.com

Address: A1208, Overseas Decoration Building, #122 Zhenhua RD., Futian, Shenzhen, China



4

3

2

1

THIS DRAWING IS UNPUBLISHED.

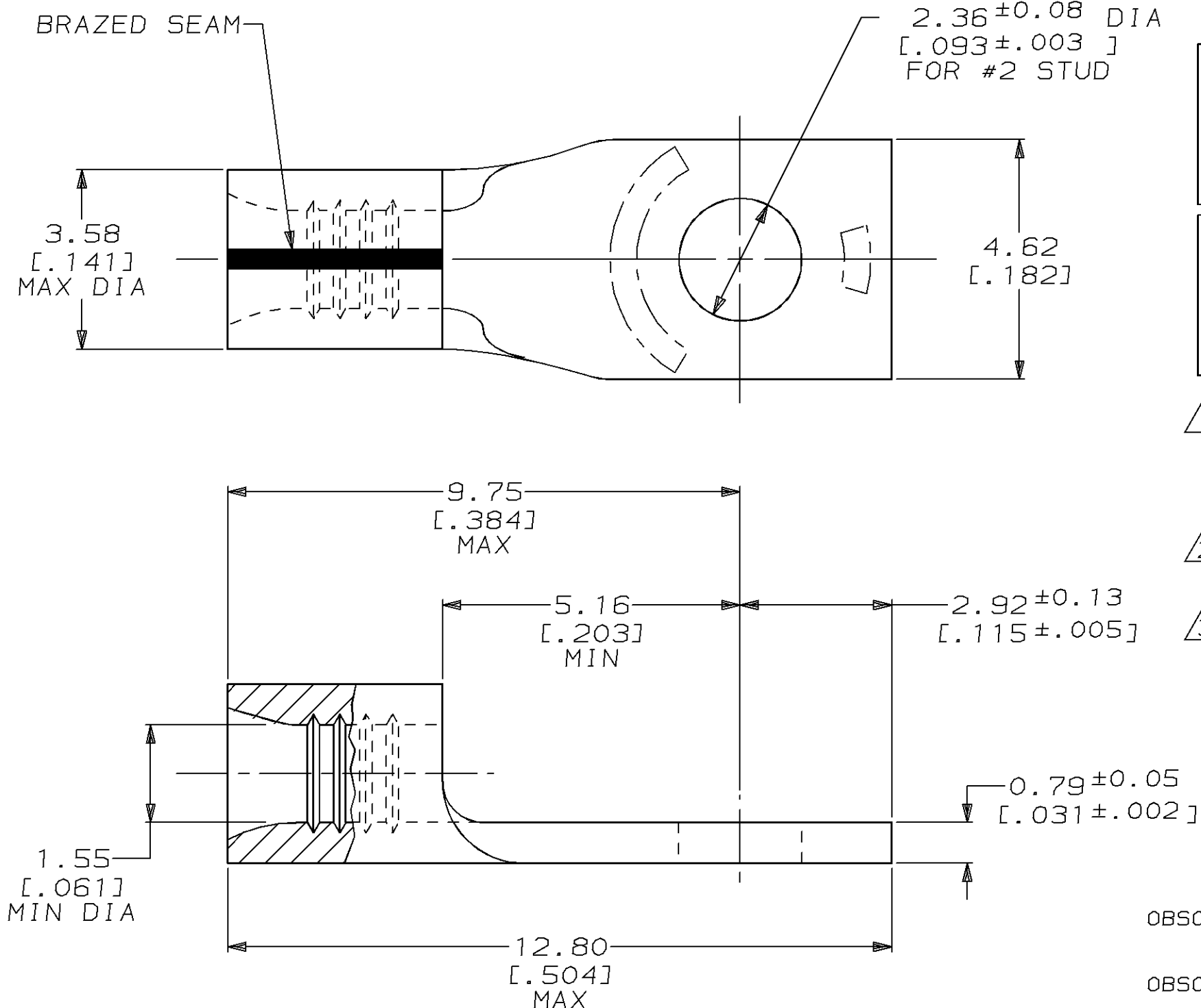
RELEASED FOR PUBLICATION

,19 .

© COPYRIGHT 19

BY AMP INCORPORATED. ALL RIGHTS RESERVED.

| LOC | DIST | REVISIONS | | | | |
|-----|------|-----------|-----|--------------------------------|---------|----------|
| | | P | LTR | DESCRIPTION | DATE | DWN APVD |
| G | 14 | | E | REACT & REDWN PER 0720-0869-96 | 14FEB96 | DKS MJS |

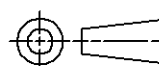


- ① STAMP AMP 22-18* 1-2 APPROX AS SHOWN
22-16 TERMINALS ARE STAMPED WITH 22-18 IN
ACCORDANCE WITH MILITARY SPEC MIL-T-7928
COMMERCIAL WIRE RANGE IS 22-16
- ② TIN PL 0.00254[.000100] MIN THK
PER MIL-T-10727
- ③ GOLD PL 0.00254[.000100] MIN THK
PER MIL-G-45204 OVER NICKEL PL
0.00127[.000050] MIN THK PER QQ-N-290

| | | | | |
|----------|-----|--------------|-----------------------|------------|
| OBSOLETE | ② | 5000 | MOUNTED ON TAPE, REEL | 2-324576-2 |
| | ③ | - | LOOSE PIECE | 324576-1 |
| OBSOLETE | ② | - | LOOSE PIECE | 324576 |
| FINISH | QTY | PACKAGE TYPE | AMP PART NUMBER | |

AMP INCORPORATED CUSTOMER SERVICE SYSTEMS

| | | |
|---|--|---|
| FOR ADDITIONAL PRODUCT INFORMATION OR COPIES OF DRAWINGS AND TECHNICAL DOCUMENTS | PRODUCT INFORMATION CENTER 1-800-522-6752 | RECOMMENDED OPERATING TEMPERATURE: 170° MAX |
| FOR APPLICATION TOOLING INFORMATION | TOOLING ASSISTANCE CENTER 1-800-722-1111 | VOLTAGE RATING: NOT APPLICABLE |
| FOR ORDER ENTRY | 1-800-526-5142 | WIRE CROSS SECTIONAL AREA RANGE: 0.26-1.65mm ² [509-3,260] CIR MILS STRANDED |

THIS DRAWING IS A CONTROLLED DOCUMENT FOR AMP INCORPORATED.
IT IS SUBJECT TO CHANGE AND THE CONTROLLING ENGINEERING
ORGANIZATION SHOULD BE CONTACTED FOR THE LATEST REVISION.DIMENSIONS:
mm [INCHES]MATERIAL COPPER
PER ASTM B-152
ANNEALEDTOLERANCES UNLESS
OTHERWISE SPECIFIED:

| | |
|--------|-------------|
| 0 PLC | ± |
| 1 PLC | ± |
| 2 PLC | ±0.20[.008] |
| 3 PLC | ± |
| 4 PLC | ± |
| ANGLES | ± |

SEE TABLE

| | | |
|------------------|------------|---------|
| DWN | DK SCHRUM | 14FEB96 |
| CHK | MJ SPICER | 19FEB96 |
| APVD | JL MECKLEY | 19FEB96 |
| PRODUCT SPEC | - | - |
| APPLICATION SPEC | - | - |
| WEIGHT | - | - |
| CUSTOMER DRAWING | | |

AMPAMP Incorporated
Harrisburg, PA 17105-3608NAME
TERMINAL, RECTANGULAR TONGUE,
SOLISTRAND™,
WIRE SIZE: 22-16 AWGSIZE
A3
CAGE CODE
00779
DRAWING NO
C-324576

SCALE 10:1 SHEET 1 OF 1 REV E