



Chipsmall Limited consists of a professional team with an average of over 10 year of expertise in the distribution of electronic components. Based in Hongkong, we have already established firm and mutual-benefit business relationships with customers from,Europe,America and south Asia,supplying obsolete and hard-to-find components to meet their specific needs.

With the principle of "Quality Parts,Customers Priority,Honest Operation,and Considerate Service",our business mainly focus on the distribution of electronic components. Line cards we deal with include Microchip,ALPS,ROHM,Xilinx,Pulse,ON,Everlight and Freescale. Main products comprise IC,Modules,Potentiometer,IC Socket,Relay,Connector.Our parts cover such applications as commercial,industrial, and automotives areas.

We are looking forward to setting up business relationship with you and hope to provide you with the best service and solution. Let us make a better world for our industry!



Contact us

Tel: +86-755-8981 8866 Fax: +86-755-8427 6832

Email & Skype: info@chipsmall.com Web: www.chipsmall.com

Address: A1208, Overseas Decoration Building, #122 Zhenhua RD., Futian, Shenzhen, China

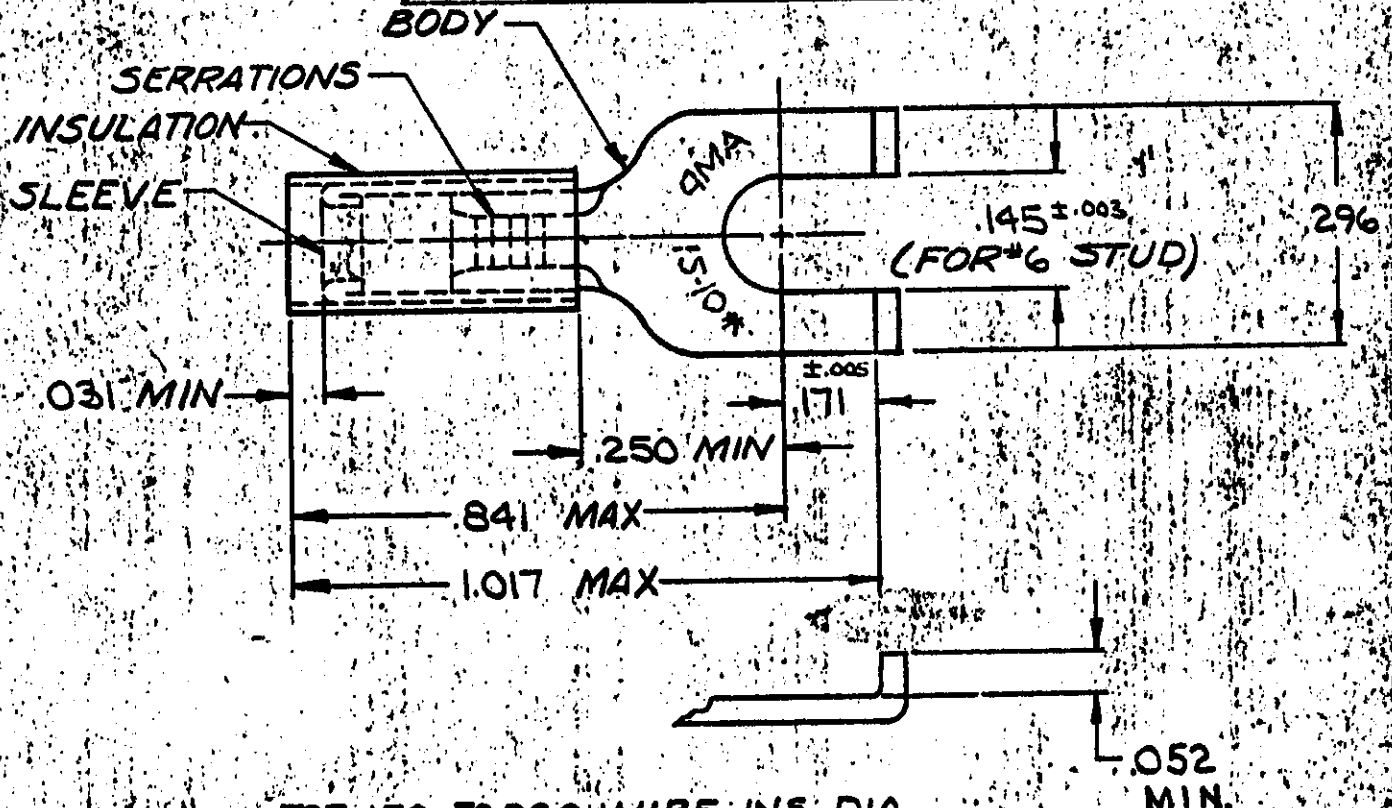


DRAWING MADE IN AMERICAN PROJECTION

LOC 6 PRINT DIST 14

©1957 BY AMP INCORPORATED. ALL RIGHTS RESERVED. AMP PRODUCTS COVERED BY PATENTS AND/OR PATENTS PENDING.

REVISIONS			
LTR	DESCRIPTION	DATE	APPROVED
B	REDRAWN & ADDED TAPE NO'S P-6080	5-8-70	<i>[Signature]</i>
C	REVISED F-636 & P-6925	9-9-74	P.M. Magliaro
D	REV PER G-4732	7/26/88	<i>[Signature]</i>
E	REV PER G-5646	1/21/91	DKS/mk



QTY	DESCRIPTION	PART NO	MATERIAL & FINISH
1	324577 ON TAPE	1-324577-0	SLEEVE: COPPER (QQ-C-576) BODY: COPPER (QQ-C-576) TIN PL (MIL-T-10727)
1	WIRE TERMINAL	324577	INSULATION: NYLON COLOR: YELLOW
UNLESS OTHERWISE SPECIFIED DIMENSIONS ARE IN INCHES TOLERANCES ON DECIMALS ± .008 ANGLES 5°			AMP INCORPORATED HARRISBURG, PENNSYLVANIA NAME: WIRE TERMINAL P.I.D.G. - FLANGED SPADE WIRE SIZE: 12-10 SIZE: A CODE IDENT NO: 00779 NUMBER: 324577 SCALE: NTS SHEET: 1 OF 1
MATERIAL		CONTRACT NO. 4	
DR. <i>[Signature]</i> 5-4-70		DR. <i>[Signature]</i> 5-4-70	
APPD <i>[Signature]</i> 5-11-70		CHK <i>[Signature]</i> 5-8-70	
REL <i>[Signature]</i> 5-11-70		REL <i>[Signature]</i> 5-11-70	
SEE TABLE			OTHER APPD