



Chipsmall Limited consists of a professional team with an average of over 10 year of expertise in the distribution of electronic components. Based in Hongkong, we have already established firm and mutual-benefit business relationships with customers from,Europe,America and south Asia,supplying obsolete and hard-to-find components to meet their specific needs.

With the principle of “Quality Parts,Customers Priority,Honest Operation,and Considerate Service”,our business mainly focus on the distribution of electronic components. Line cards we deal with include Microchip,ALPS,ROHM,Xilinx,Pulse,ON,Everlight and Freescale. Main products comprise IC,Modules,Potentiometer,IC Socket,Relay,Connector.Our parts cover such applications as commercial,industrial, and automotives areas.

We are looking forward to setting up business relationship with you and hope to provide you with the best service and solution. Let us make a better world for our industry!



Contact us

Tel: +86-755-8981 8866 Fax: +86-755-8427 6832

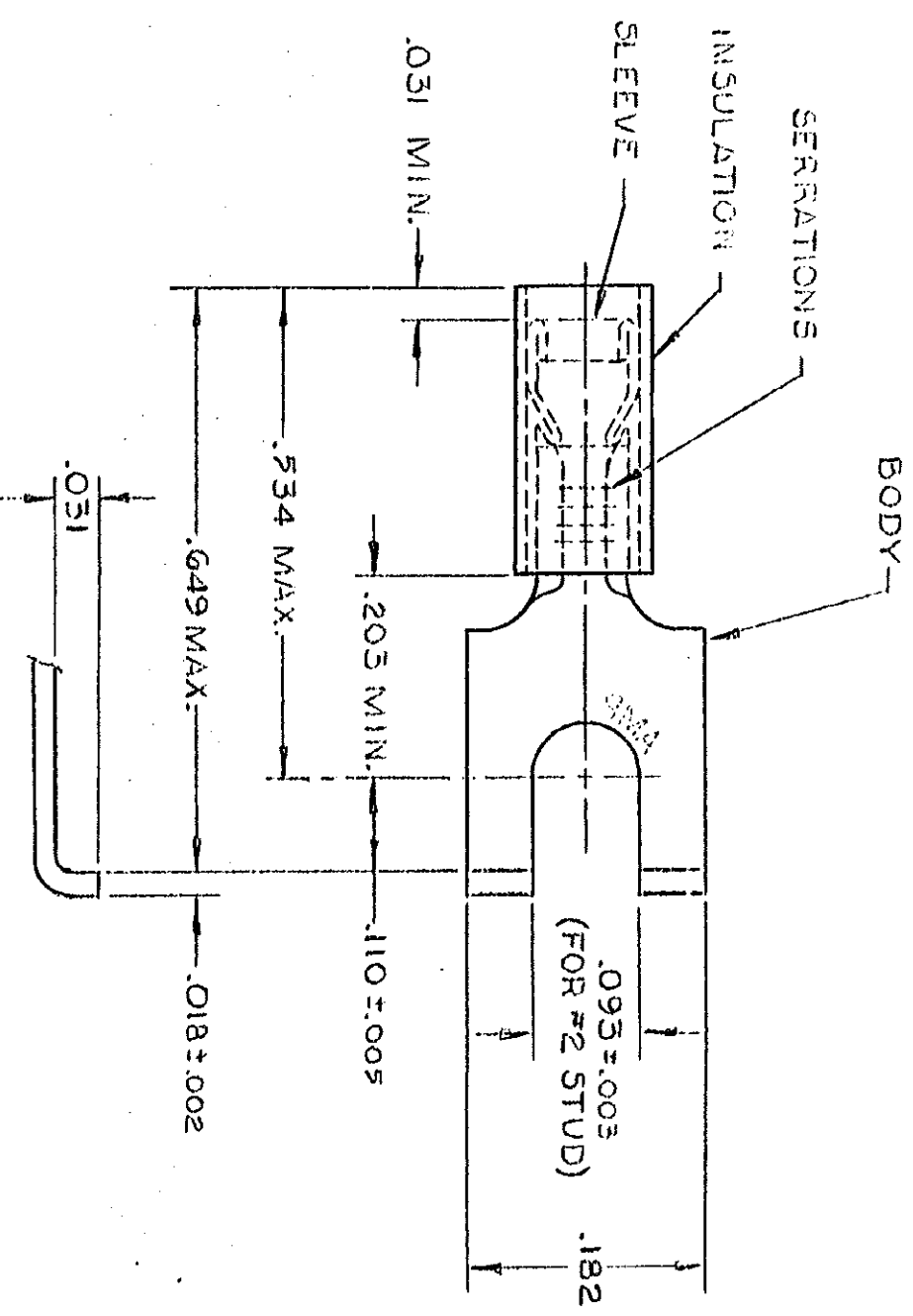
Email & Skype: info@chipsmall.com Web: www.chipsmall.com

Address: A1208, Overseas Decoration Building, #122 Zhenhua RD., Futian, Shenzhen, China



THIS DRAWING IS UNPUBLISHED. RELEASED FOR PUBLICATION

© COPYRIGHT 19 BY AMP INCORPORATED, HARRISBURG, PA. ALL INTERNATIONAL RIGHTS RESERVED. AMP PRODUCTS MAY BE COVERED BY U.S. AND FOREIGN PATENTS AND/OR PATENTS PENDING.



- 1 WIRE INSULATION DIA. = .050-.082
- 2 BODY FINISH = TIN PLATE (MIL-T-10727).000100

REVISIONS		DATE	APPROVED
P	F		
	J	4/14/85	[Signature]
	K	3/24/85	[Signature]
	L	7/22/88	[Signature]
	M	4-12-93	[Signature]
DESCRIPTION			
REDRAWN-REVISED PER G-1479,			
G-1175, P85-0131 & P85-0132			
OBSOLETE 2-24-83/G-2393			
REV PER G-4732			
REV/0720-0066-93			

QUANTITY	DESCRIPTION	PART NO
50	LOOSE PC. BOX	8-324597-2
100	ON TAPE, 5M BOX	2-324597-3
1000	ON TAPE, 10M BOX	2-324597-2
5000	ON TAPE, REEL	2-324597-1
—	LOOSE PIECE	324597

OBSOLETE

UNLESS OTHERWISE SPECIFIED DIMENSIONS ARE IN INCHES. TOLERANCES ON: DECIMALS ± .005 ANGLES ± .005		CONTRACT NO		NAME	
MATERIAL INSULATION: NYLON-YELLOW BODY & SLEEVE: COPPER (QG-C576)		DR VTA/RFB 10-2-87		AMP AMP INCORPORATED Harrisburg, Pa.	
FINISH BODY - 2		CHS [Signature]		TERMINAL, P.I.D.G., FLANGED SPADE WIRE SIZE: 26-22	
OTHER APPD		APPD [Signature]		SIZE B	
		DSGN APPD		FSCM NO 00779	
		OTHER APPD		DRAWING NO 324597	
				SCALE NTS	
				SHEET 1 OF 1	

CUSTOMER DRAWING