



Chipsmall Limited consists of a professional team with an average of over 10 year of expertise in the distribution of electronic components. Based in Hongkong, we have already established firm and mutual-benefit business relationships with customers from,Europe,America and south Asia,supplying obsolete and hard-to-find components to meet their specific needs.

With the principle of "Quality Parts,Customers Priority,Honest Operation,and Considerate Service",our business mainly focus on the distribution of electronic components. Line cards we deal with include Microchip,ALPS,ROHM,Xilinx,Pulse,ON,Everlight and Freescale. Main products comprise IC,Modules,Potentiometer,IC Socket,Relay,Connector.Our parts cover such applications as commercial,industrial, and automotives areas.

We are looking forward to setting up business relationship with you and hope to provide you with the best service and solution. Let us make a better world for our industry!



Contact us

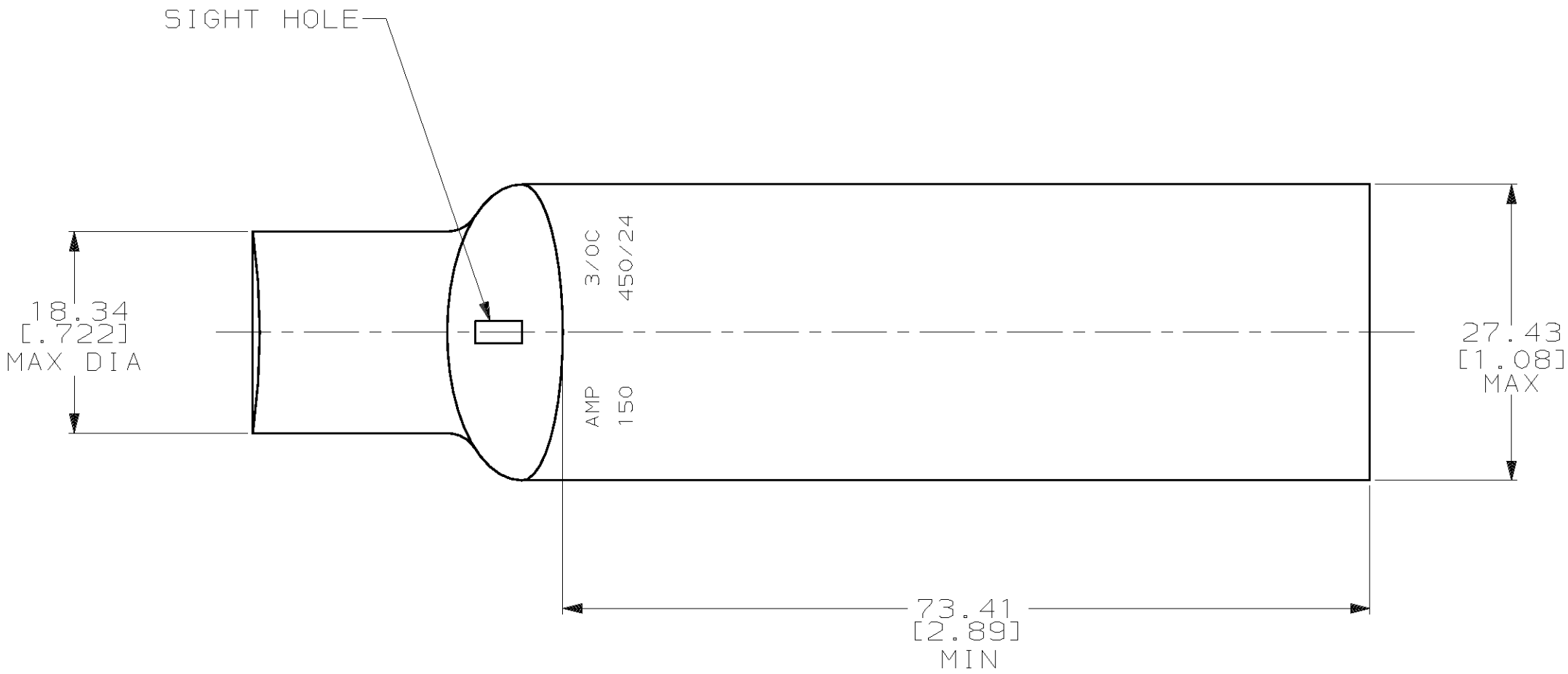
Tel: +86-755-8981 8866 Fax: +86-755-8427 6832

Email & Skype: info@chipsmall.com Web: www.chipsmall.com

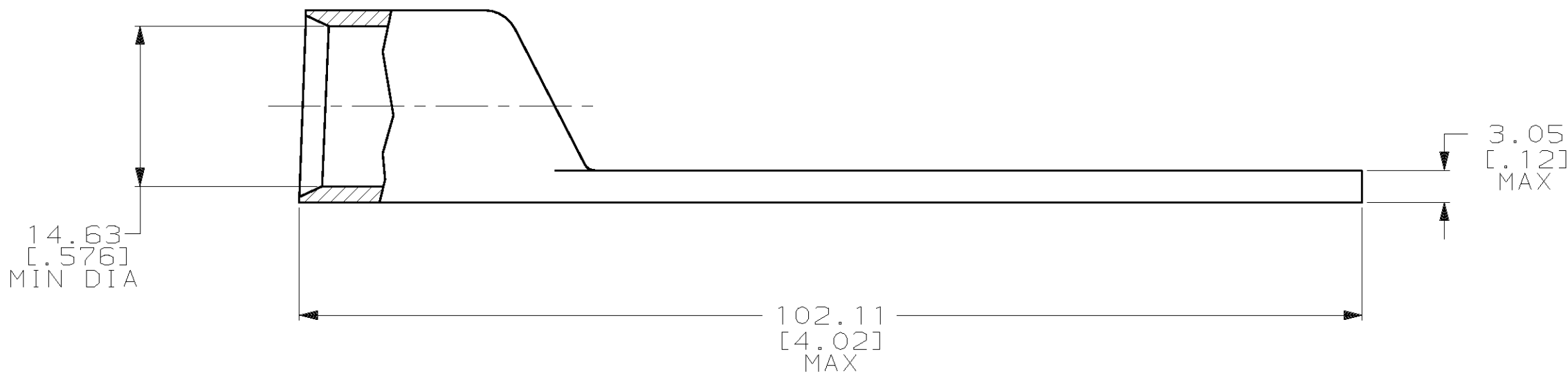
Address: A1208, Overseas Decoration Building, #122 Zhenhua RD., Futian, Shenzhen, China



LOC	DIST	P	F	REVISIONS				DATE	APPD
				ZONE	LTR	DESCRIPTION			
G	86				N	REV PER 063A-0561-01		070CT02	JR/MS



1 CIRCULAR MIL AREA RANGE: 150,500-190,000 CM
2 TIN PL 0.00381 [.000150] THK PER MIL-T-10727



325508			
PART NO			
DO NOT SCALE PRINT. UNLESS SPECIFIED DIMENSIONS IN mm [INCHES] TOLERANCES ON : 2 PLC DEC ± 0.51 [.020] 3 PLC DEC ± - ANGLES ± -		DR 02/28/90 DK SCHRUM	
MATERIAL ANNEALED COPPER ASTM B-75		CHK 18JAN95 MS FEHER	
FINISH 2		APPD 18JAN95 WJ VOCKROTH	
		APPD 18JAN95 TL SHUTTER	
		PRODUCT SPEC -	
		APPLICATION SPEC -	
		WEIGHT .141 LB	
		SIZE C	CAGE CODE 00779
		SCALE 2:1	DRAWING NO 325508
			SHEET 1 OF 1