



Chipsmall Limited consists of a professional team with an average of over 10 year of expertise in the distribution of electronic components. Based in Hongkong, we have already established firm and mutual-benefit business relationships with customers from,Europe,America and south Asia,supplying obsolete and hard-to-find components to meet their specific needs.

With the principle of “Quality Parts,Customers Priority,Honest Operation,and Considerate Service”,our business mainly focus on the distribution of electronic components. Line cards we deal with include Microchip,ALPS,ROHM,Xilinx,Pulse,ON,Everlight and Freescale. Main products comprise IC,Modules,Potentiometer,IC Socket,Relay,Connector.Our parts cover such applications as commercial,industrial, and automotives areas.

We are looking forward to setting up business relationship with you and hope to provide you with the best service and solution. Let us make a better world for our industry!



Contact us

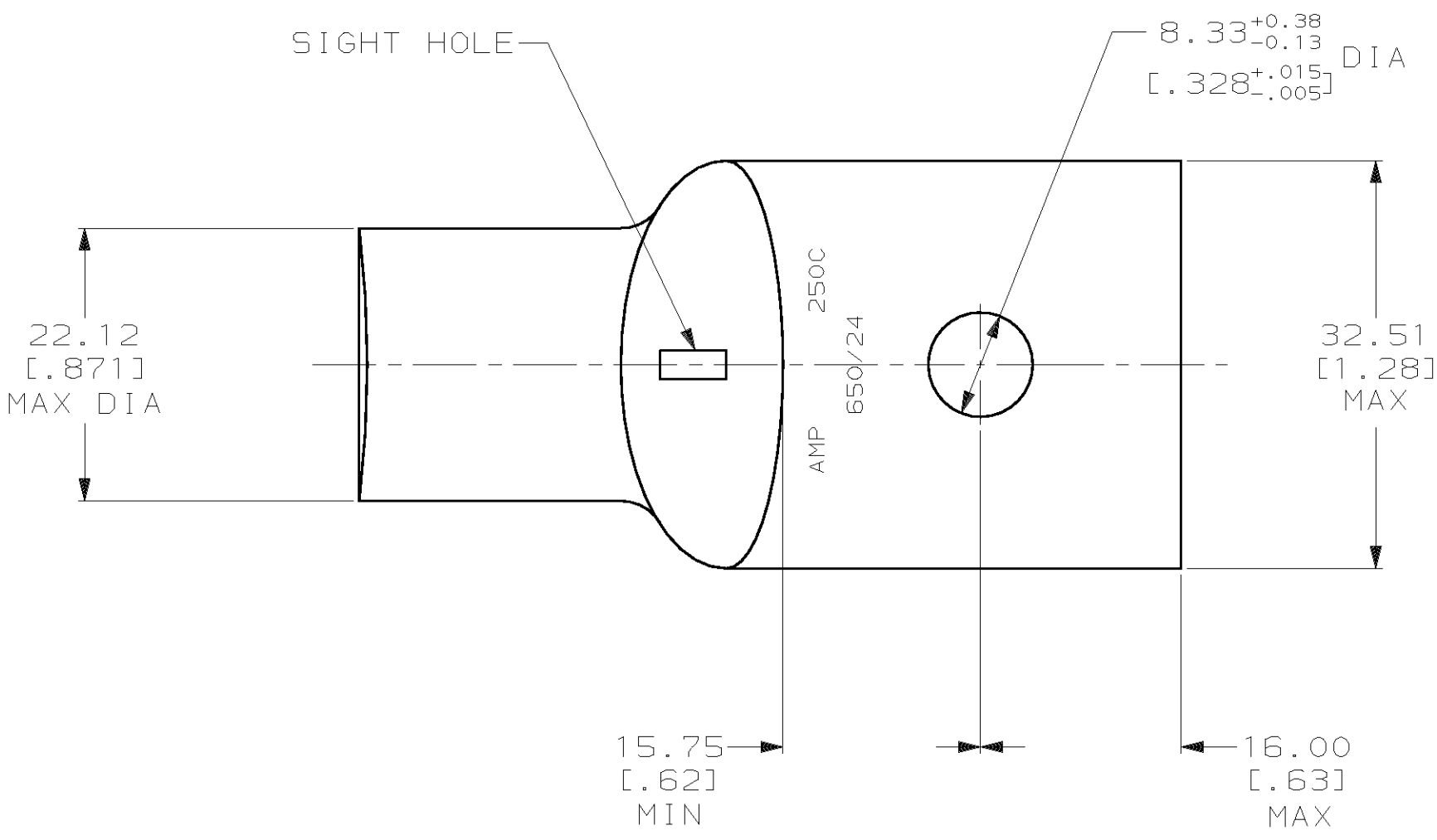
Tel: +86-755-8981 8866 Fax: +86-755-8427 6832

Email & Skype: info@chipsmall.com Web: www.chipsmall.com

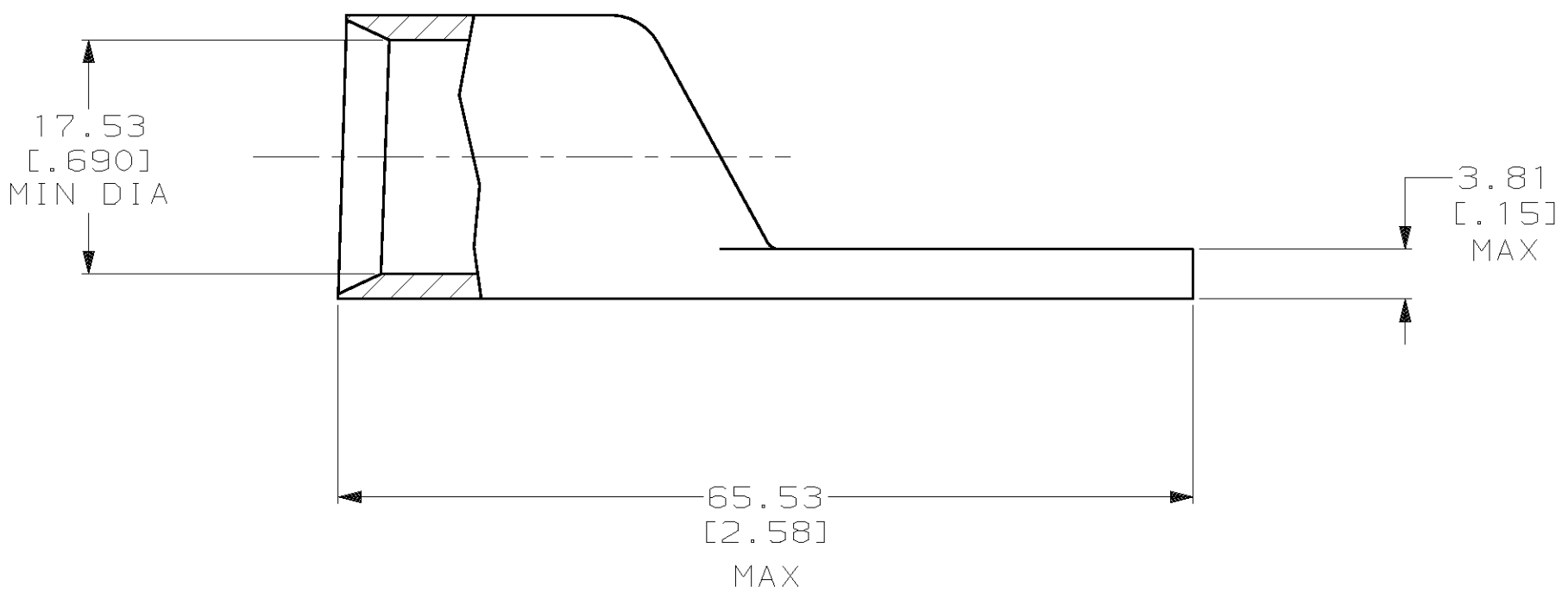
Address: A1208, Overseas Decoration Building, #122 Zhenhua RD., Futian, Shenzhen, China



LOC	DIST	P	F	REVISIONS			DATE	APPD
				ZONE	LTR	DESCRIPTION		
G	86				N	REV PER 063A-0561-01	080CT02	JR/MS



1 CIRCULAR MIL AREA RANGE: 231-275 MCM
2 TIN PL 0.00381 [.000150] MIN THK PER MIL-T-10727



				PART NO	
DO NOT SCALE PRINT. UNLESS SPECIFIED DIMENSIONS IN mm [INCHES] TOLERANCES ON : 2 PLC DEC ± 0.51 [.020] 3 PLC DEC ± - ANGLES ± - MATERIAL ANNEALED COPPER ASTM B-75		DR 03/16/90 DK SCHRUM		<div>AMP</div> AMP INCORPORATED Harrisburg, Pa. 17105	
		CHK 19JAN95 MS FEHER			
		APPD 19JAN95 WJ VOCKROTH		NAME TERMINAL, AMPOWER, WIRE SIZE: 250 MCM	
		APPD 19JAN95 TL SHUTTER			
FINISH <div>2</div>		PRODUCT SPEC 108-30200			
		APPLICATION SPEC -		SIZE C	
		WEIGHT .128 LB		CAGE CODE 00779	
		SCALE 2:1		DRAWING NO 325702	
				SHEET 1 OF 1	