



Chipsmall Limited consists of a professional team with an average of over 10 year of expertise in the distribution of electronic components. Based in Hongkong, we have already established firm and mutual-benefit business relationships with customers from,Europe,America and south Asia,supplying obsolete and hard-to-find components to meet their specific needs.

With the principle of “Quality Parts,Customers Priority,Honest Operation,and Considerate Service”,our business mainly focus on the distribution of electronic components. Line cards we deal with include Microchip,ALPS,ROHM,Xilinx,Pulse,ON,Everlight and Freescale. Main products comprise IC,Modules,Potentiometer,IC Socket,Relay,Connector.Our parts cover such applications as commercial,industrial, and automotives areas.

We are looking forward to setting up business relationship with you and hope to provide you with the best service and solution. Let us make a better world for our industry!



Contact us

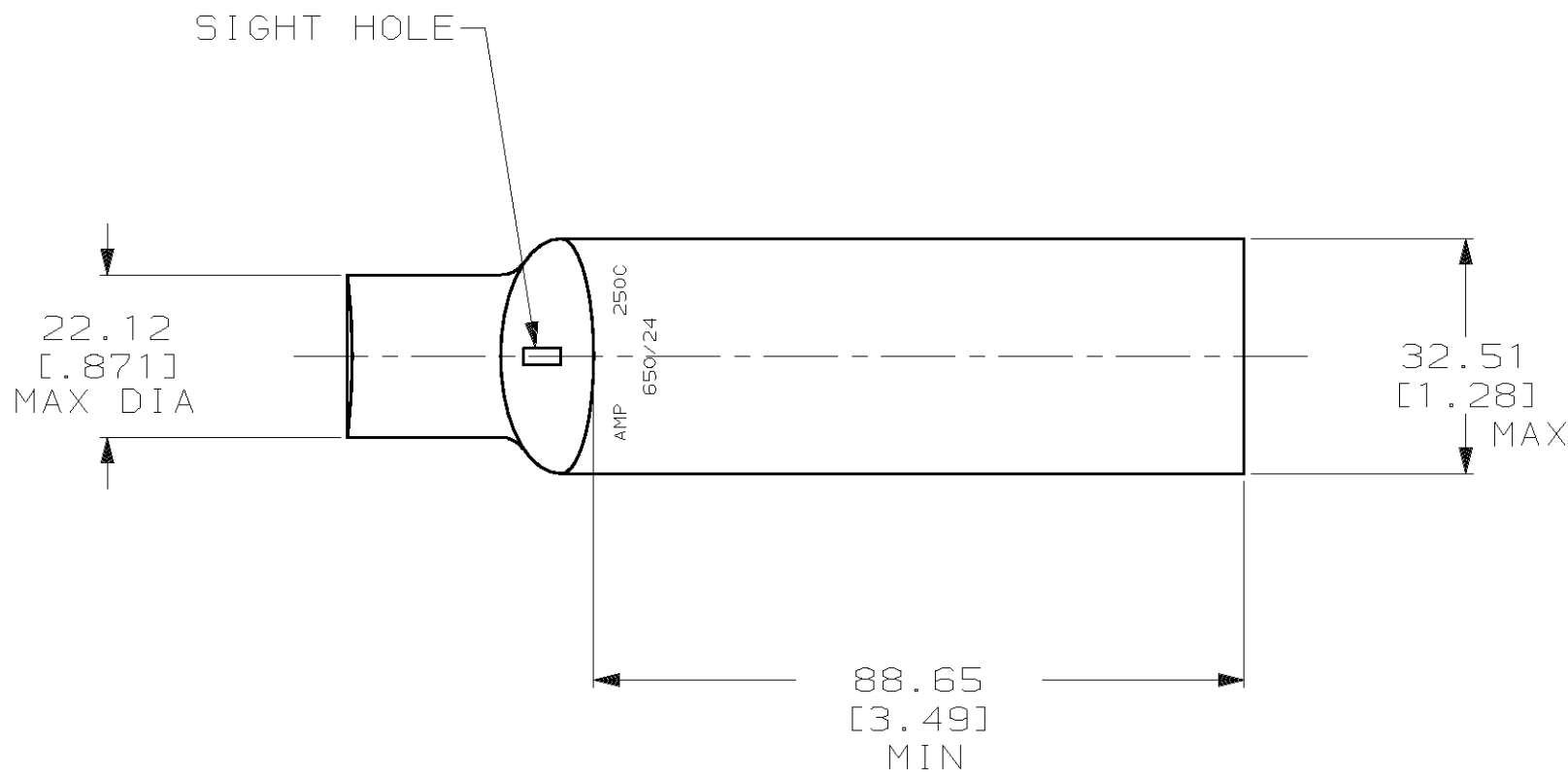
Tel: +86-755-8981 8866 Fax: +86-755-8427 6832

Email & Skype: info@chipsmall.com Web: www.chipsmall.com

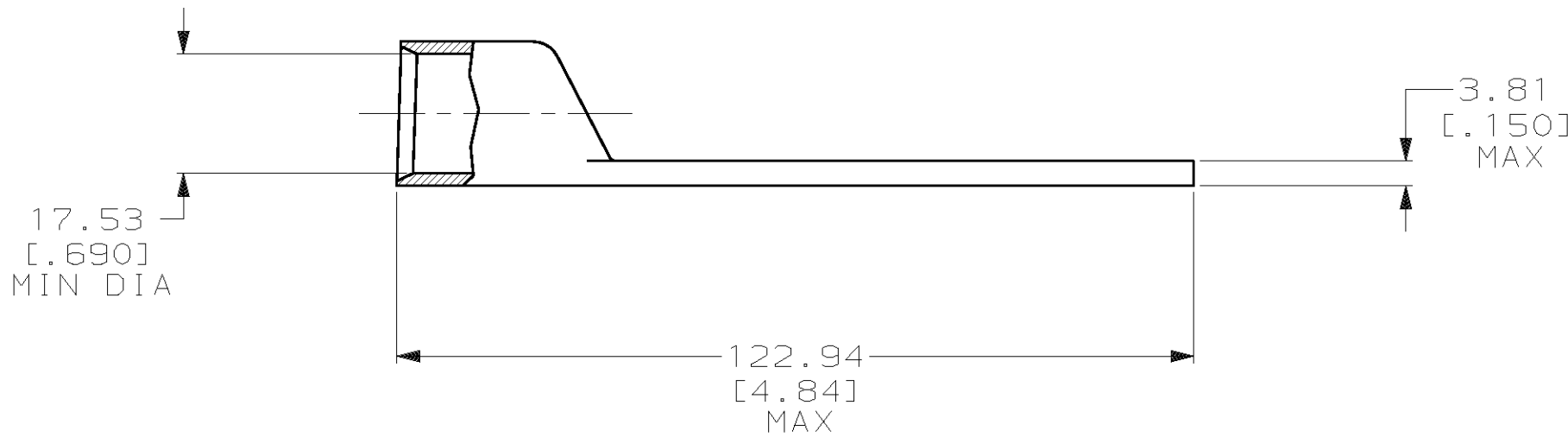
Address: A1208, Overseas Decoration Building, #122 Zhenhua RD., Futian, Shenzhen, China



| LOC | DIST | P | F | REVISIONS | | | | |
|-----|------|---|---|-----------|-----|----------------------|---------|-------|
| | | | | ZONE | LTR | DESCRIPTION | DATE | APPD |
| G | 86 | | | | R | REV PER 0G3A-0561-01 | 08OCT02 | JR/MS |



1 CIRCULAR MIL AREA RANGE: 231-275 MCM
2 TIN PL 0.00381[0.000150] THK PER MIL-T-10727



| | | | |
|--|--|--|--|
| 325712 | | | |
| PART NO | | | |
| DO NOT SCALE PRINT. UNLESS SPECIFIED DIMENSIONS IN mm [INCHES] TOLERANCES ON : 2 PLC DEC ± 0.51[0.020] 3 PLC DEC ± - ANGLES ± - | | DR 02/28/90 DK SCHRUM CHK 20JAN95 MS FEHER APPD 20JAN95 WJ VOCKROTH APPD 20JAN95 TL SHUTTER PRODUCT SPEC 108-30200 APPLICATION SPEC - WEIGHT .248 LB | |
| MATERIAL ANNEALED COPPER ASTM B-75 | | NAME | |
| FINISH | | AMP INCORPORATED Harrisburg, Pa. 17105 | |
| 2 | | TERMINAL, AMPOWER, WIRE SIZE: 250 MCM | |
| SCALE 1:1 | | SIZE C CAGE CODE 00779 DRAWING NO 325712 | |
| SHEET 1 OF 1 | | | |