



Chipsmall Limited consists of a professional team with an average of over 10 year of expertise in the distribution of electronic components. Based in Hongkong, we have already established firm and mutual-benefit business relationships with customers from,Europe,America and south Asia,supplying obsolete and hard-to-find components to meet their specific needs.

With the principle of “Quality Parts,Customers Priority,Honest Operation,and Considerate Service”,our business mainly focus on the distribution of electronic components. Line cards we deal with include Microchip,ALPS,ROHM,Xilinx,Pulse,ON,Everlight and Freescale. Main products comprise IC,Modules,Potentiometer,IC Socket,Relay,Connector.Our parts cover such applications as commercial,industrial, and automotives areas.

We are looking forward to setting up business relationship with you and hope to provide you with the best service and solution. Let us make a better world for our industry!



Contact us

Tel: +86-755-8981 8866 Fax: +86-755-8427 6832

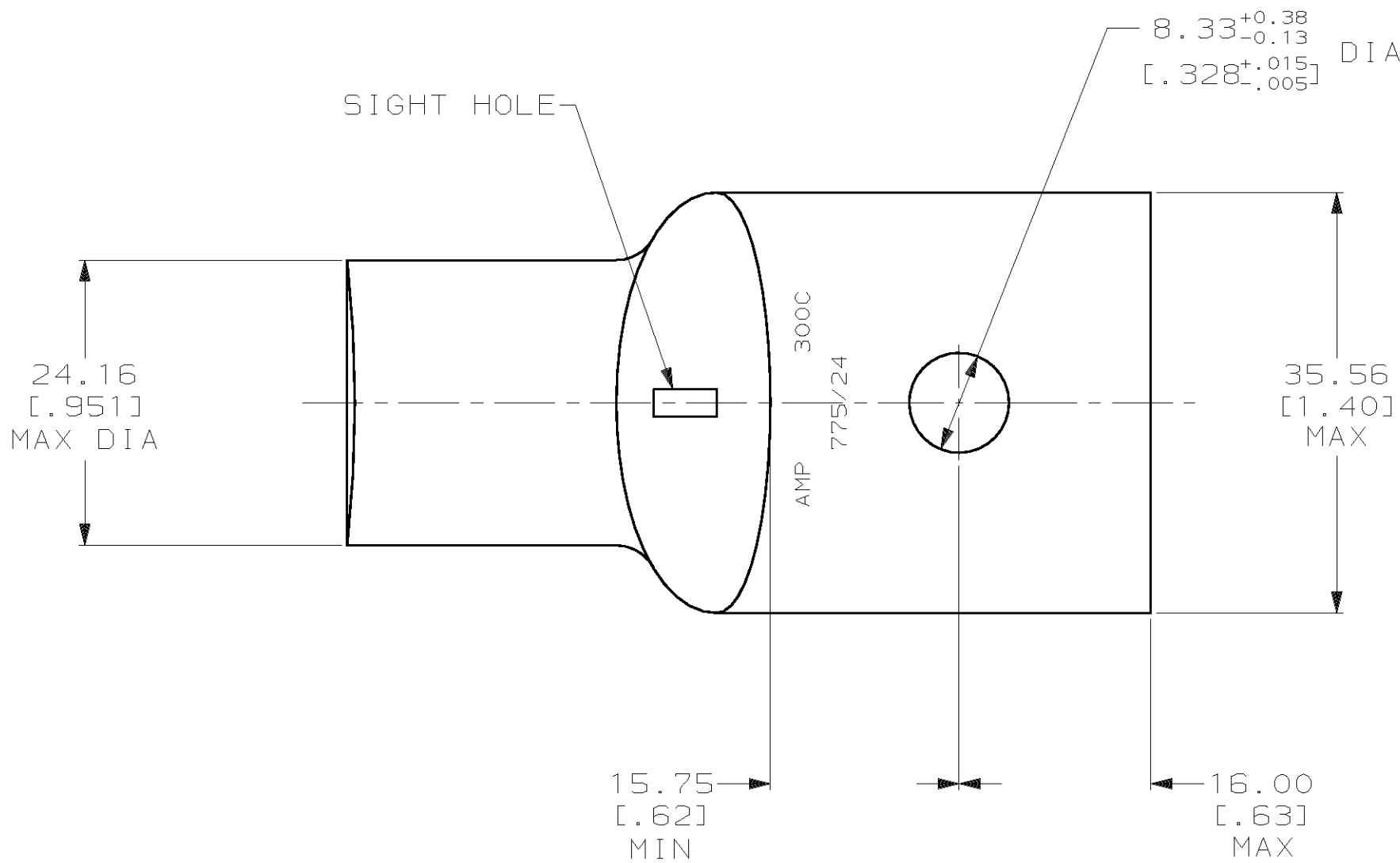
Email & Skype: info@chipsmall.com Web: www.chipsmall.com

Address: A1208, Overseas Decoration Building, #122 Zhenhua RD., Futian, Shenzhen, China

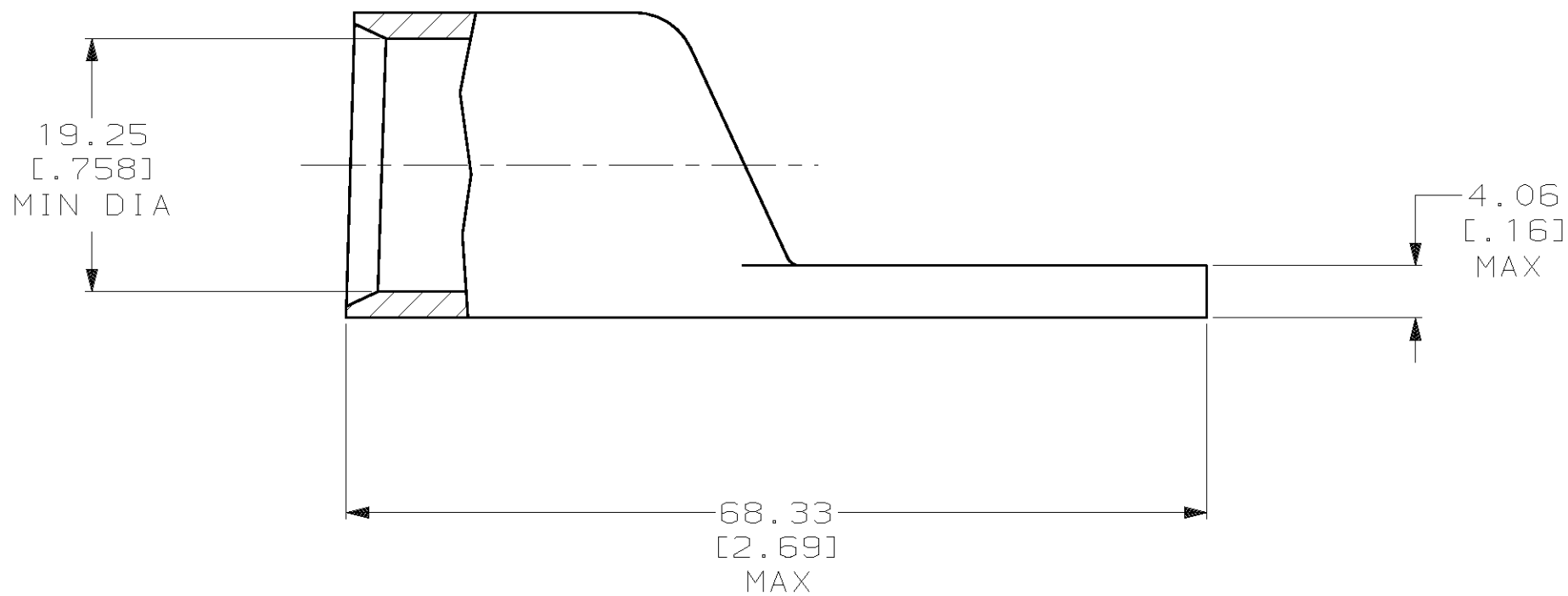


THIS DRAWING IS UNPUBLISHED. RELEASED FOR PUBLICATION ,19 .
© COPYRIGHT 19 BY AMP INCORPORATED. ALL INTERNATIONAL RIGHTS RESERVED.

LOC	DIST	P	F	REVISIONS			DATE	APPD
				ZONE	LTR	DESCRIPTION		
G	86				T	REV PER 063A-0561-01	080CT02	JR/MS



- 1 CIRCULAR MIL AREA RANGE: 275-325 MCM
- 2 TIN PL 0.00381 [0.000150] MIN THK PER MIL-T-10727



325802		
PART NO		
DO NOT SCALE PRINT. UNLESS SPECIFIED DIMENSIONS IN mm [INCHES] TOLERANCES ON : 2 PLC DEC ± 0.51 [0.020] 3 PLC DEC ± - ANGLES ± - MATERIAL ANNEALED COPPER ASTM B-75 FINISH △2		
DR 03/09/90 DK SCHRUM CHK 23JAN95 MS FEHER APPD 23JAN95 WJ VOCKROTH APPD 23JAN95 TL SHUTTER PRODUCT SPEC 108-30200 APPLICATION SPEC - WEIGHT .162 LB		
AMP AMP INCORPORATED Harrisburg, Pa. 17105		
NAME TERMINAL, AMPPOWER TM WIRE SIZE: 300 MCM		
SIZE C	CAGE CODE 00779	DRAWING NO 325802
SCALE 2:1	SHEET 1 OF 1	