



Chipsmall Limited consists of a professional team with an average of over 10 year of expertise in the distribution of electronic components. Based in Hongkong, we have already established firm and mutual-benefit business relationships with customers from,Europe,America and south Asia,supplying obsolete and hard-to-find components to meet their specific needs.

With the principle of “Quality Parts,Customers Priority,Honest Operation,and Considerate Service”,our business mainly focus on the distribution of electronic components. Line cards we deal with include Microchip,ALPS,ROHM,Xilinx,Pulse,ON,Everlight and Freescale. Main products comprise IC,Modules,Potentiometer,IC Socket,Relay,Connector.Our parts cover such applications as commercial,industrial, and automotives areas.

We are looking forward to setting up business relationship with you and hope to provide you with the best service and solution. Let us make a better world for our industry!



Contact us

Tel: +86-755-8981 8866 Fax: +86-755-8427 6832

Email & Skype: info@chipsmall.com Web: www.chipsmall.com

Address: A1208, Overseas Decoration Building, #122 Zhenhua RD., Futian, Shenzhen, China



THIS DRAWING IS UNPUBLISHED.

RELEASED FOR PUBLICATION

© COPYRIGHT - BY TYCO ELECTRONICS CORPORATION. ALL RIGHTS RESERVED.

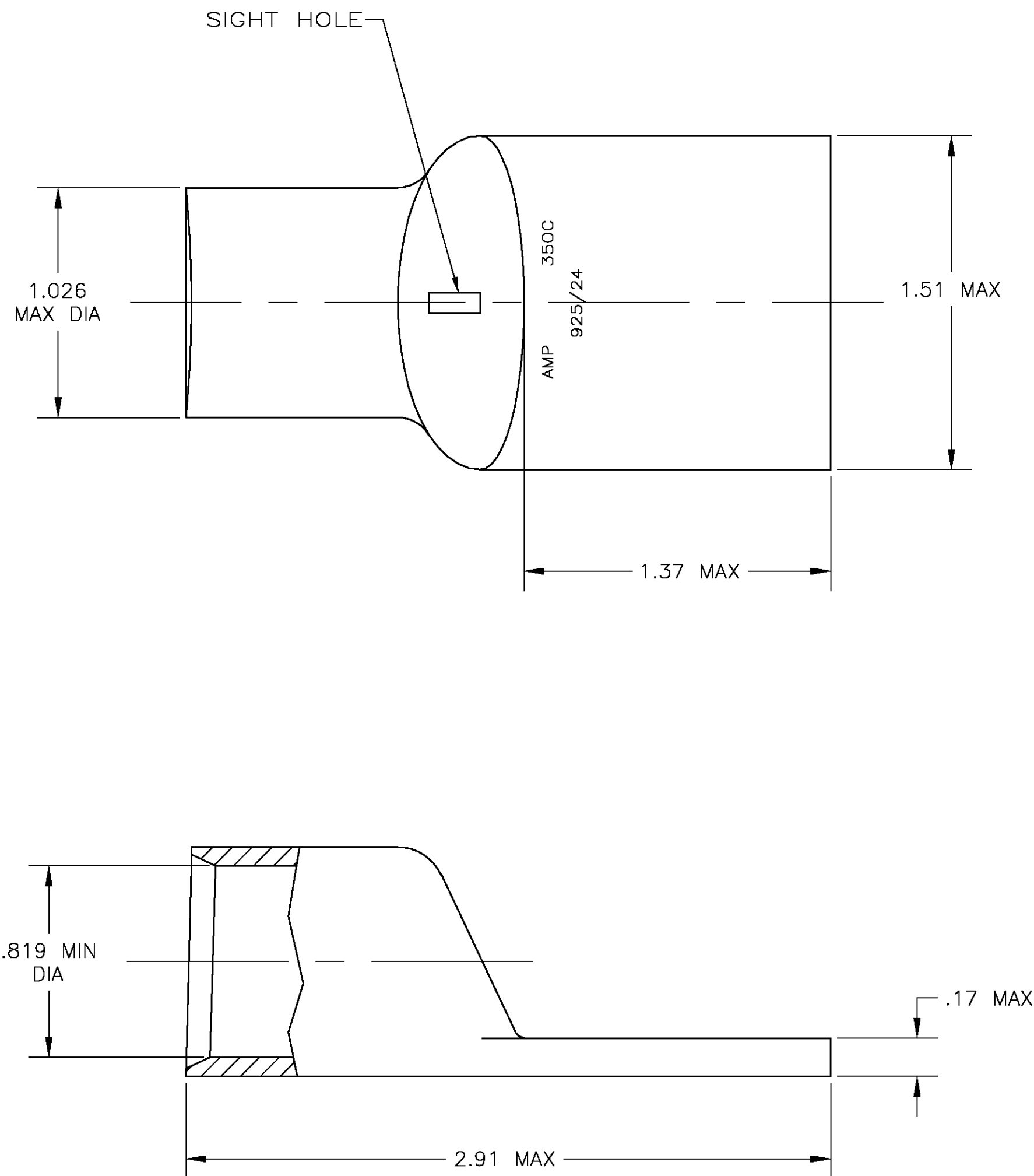
LOC	DIST	REVISIONS					
		P	LTR	DESCRIPTION	DATE	DWN	APVD
G	86		N	REV PER 0G3A-0481-03	06AUG03	JR	MS

D

C

B

A



- 1 CIRCULAR MIL AREA RANGE: 325-375 MCM
- 2 TIN PL .000150 MIN THK PER ASTM B 545
- 3 CLEANED, UNPLATED
- 4 ANNEALED COPPER PER ASTM B-75

D

C

B

A

325906

THIS DRAWING IS A CONTROLLED DOCUMENT.		DWN DK SCHRUM CHK MS FEHER		03/09/90 23JAN95		tyco Electronics		Tyco Electronics Corporation Harrisburg, PA 17105					
DIMENSIONS: INCHES		TOLERANCES, UNLESS OTHERWISE SPECIFIED:		APVD M SPICER 23JAN95		NAME							
		0 PLC ± -		PRODUCT SPEC		TERMINAL, AMPPOWER, WIRE SIZE: 350 MCM -							
		1 PLC ± -		108-30200									
		2 PLC ± -.020		APPLICATION SPEC									
		3 PLC ± -		-		SIZE		CAGE CODE		DRAWING NO		RESTRICTED TO	
		4 PLC ± -											
MATERIAL COPPER		ANGLES ± -		FINISH		WEIGHT .207 LB		A2		00779		C=325906	
SEE TABLE													
		</											