



Chipsmall Limited consists of a professional team with an average of over 10 year of expertise in the distribution of electronic components. Based in Hongkong, we have already established firm and mutual-benefit business relationships with customers from,Europe,America and south Asia,supplying obsolete and hard-to-find components to meet their specific needs.

With the principle of “Quality Parts,Customers Priority,Honest Operation,and Considerate Service”,our business mainly focus on the distribution of electronic components. Line cards we deal with include Microchip,ALPS,ROHM,Xilinx,Pulse,ON,Everlight and Freescale. Main products comprise IC,Modules,Potentiometer,IC Socket,Relay,Connector.Our parts cover such applications as commercial,industrial, and automotives areas.

We are looking forward to setting up business relationship with you and hope to provide you with the best service and solution. Let us make a better world for our industry!



## Contact us

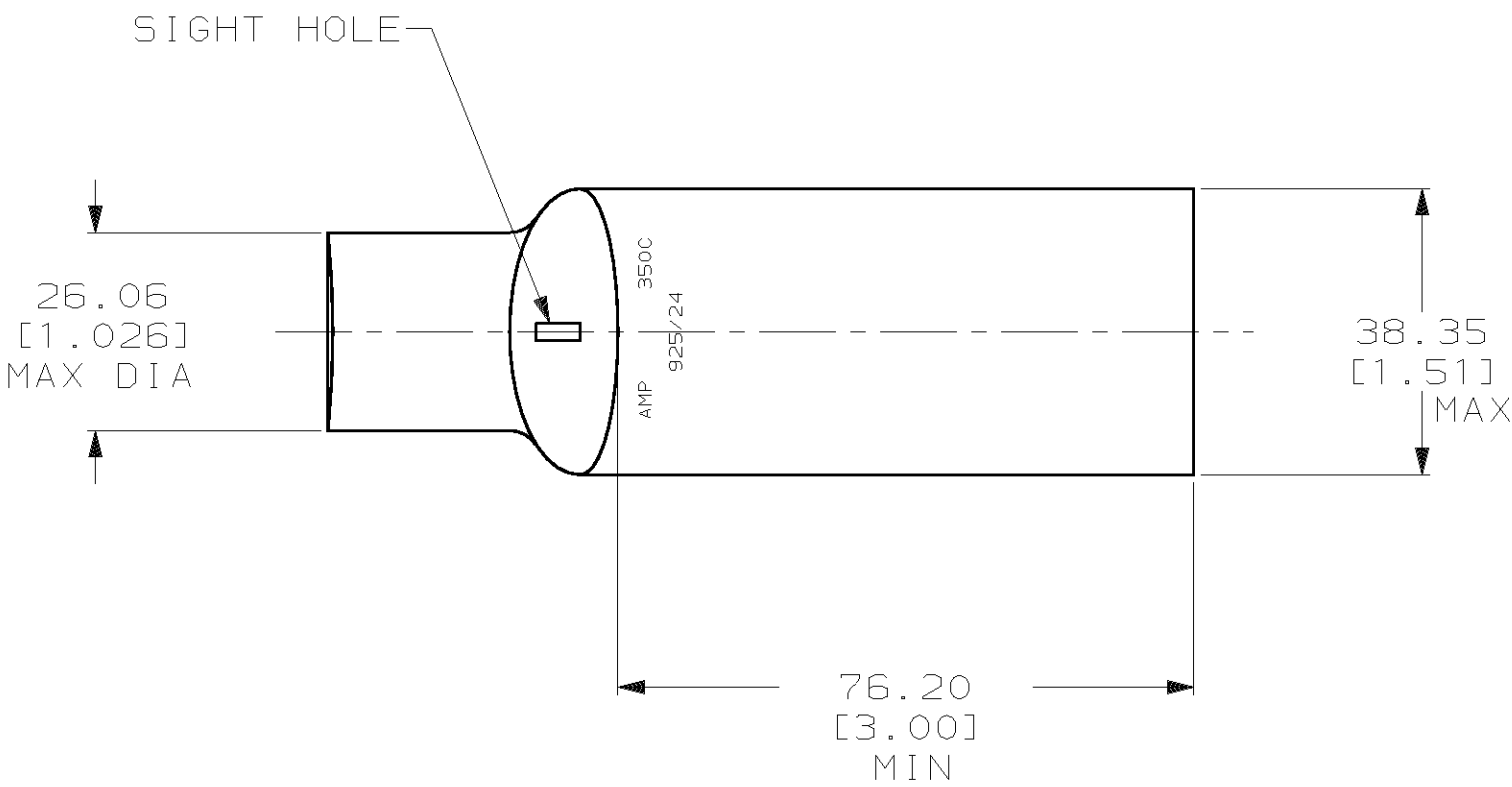
Tel: +86-755-8981 8866 Fax: +86-755-8427 6832

Email & Skype: [info@chipsmall.com](mailto:info@chipsmall.com) Web: [www.chipsmall.com](http://www.chipsmall.com)

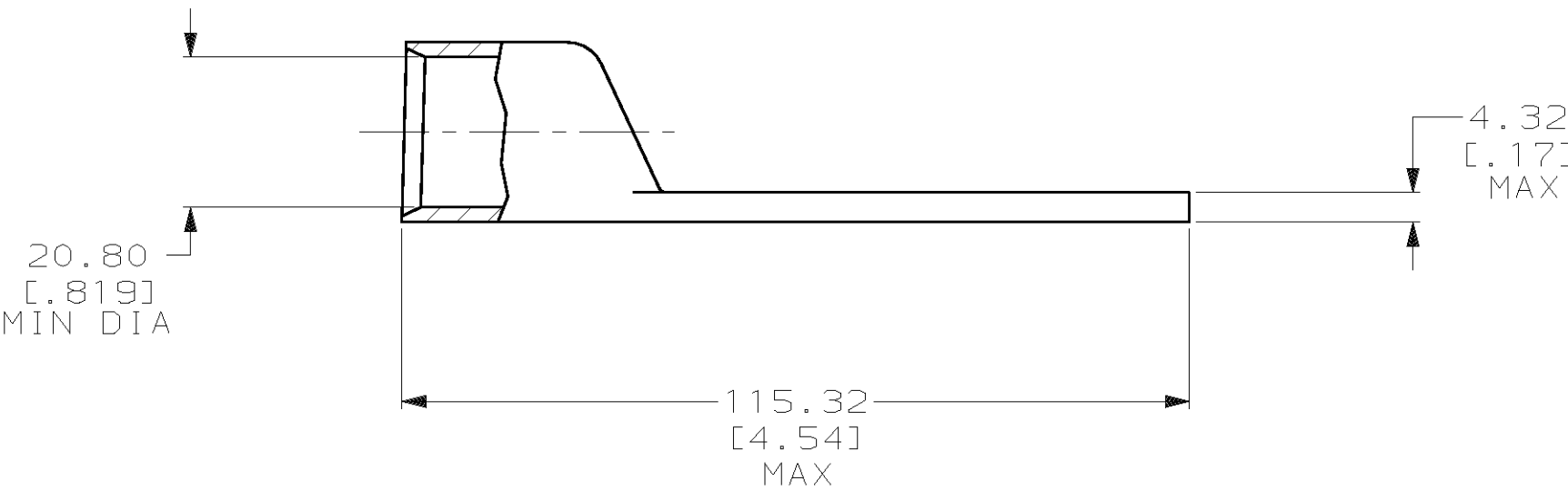
Address: A1208, Overseas Decoration Building, #122 Zhenhua RD., Futian, Shenzhen, China



| LOC | DIST | P | F | REVISIONS |     |                      |         |      |
|-----|------|---|---|-----------|-----|----------------------|---------|------|
|     |      |   |   | ZONE      | LTR | DESCRIPTION          | DATE    | APPD |
| G   | 86   |   |   |           | L   | REV PER 063A-0561-01 | 08OCT02 | MS   |



1 CIRCULAR MIL AREA RANGE: 325-375 MCM  
2 TIN PL 0.00381 [.000150] THK PER MIL-T-10727



|  |  |                             |  |   |                    |                      |
|--|--|-----------------------------|--|---|--------------------|----------------------|
|  |  |                             |  | 325917  |                    |                      |
|  |  |                             |  | PART NO   |                    |                      |
| DO NOT SCALE PRINT.<br>UNLESS SPECIFIED<br>DIMENSIONS IN mm [INCHES]<br>TOLERANCES ON :<br>2 PLC DEC ± 0.51[.020]<br>3 PLC DEC ± -<br>ANGLES ± -<br>MATERIAL<br><br>ANNEALED COPPER<br>ASTM B-75 |  | DR 02/28/90<br>DK SCHRUM    |  | <div>AMP AMP INCORPORATED<br/>Harrisburg, Pa. 17105</div> <div>NAME<br/><br/>TERMINAL, AMPPOWER™<br/>WIRE SIZE: 350 MCM</div> |                    |                      |
|  |  | CHK 23JAN95<br>MS FEHER     |  |   |                    |                      |
|  |  | APPD 23JAN95<br>WJ VOCKROTH |  |   |                    |                      |
|  |  | APPD 23JAN95<br>TL SHUTTER  |  |   |                    |                      |
|  |  | PRODUCT SPEC<br>108-30200   |  |   |                    |                      |
| FINISH<br><div>2</div>   |  | APPLICATION SPEC<br>-       |  | SIZE<br>C   | CAGE CODE<br>00779 | DRAWING NO<br>325917 |
|  |  | WEIGHT .325 LB              |  | SCALE 1:1   |                    | SHEET 1 OF 1         |