



Chipsmall Limited consists of a professional team with an average of over 10 year of expertise in the distribution of electronic components. Based in Hongkong, we have already established firm and mutual-benefit business relationships with customers from,Europe,America and south Asia,supplying obsolete and hard-to-find components to meet their specific needs.

With the principle of “Quality Parts,Customers Priority,Honest Operation,and Considerate Service”,our business mainly focus on the distribution of electronic components. Line cards we deal with include Microchip,ALPS,ROHM,Xilinx,Pulse,ON,Everlight and Freescale. Main products comprise IC,Modules,Potentiometer,IC Socket,Relay,Connector.Our parts cover such applications as commercial,industrial, and automotives areas.

We are looking forward to setting up business relationship with you and hope to provide you with the best service and solution. Let us make a better world for our industry!



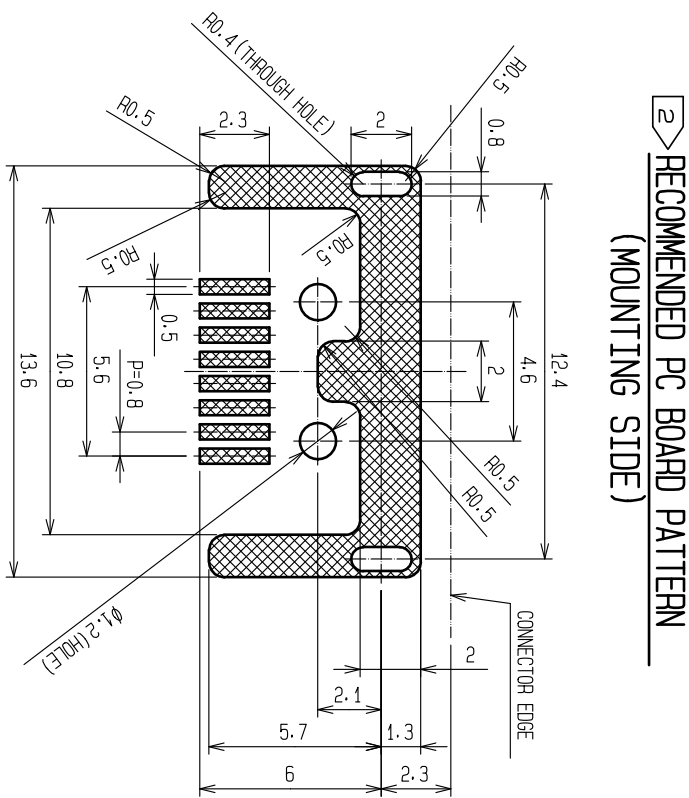
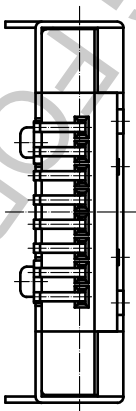
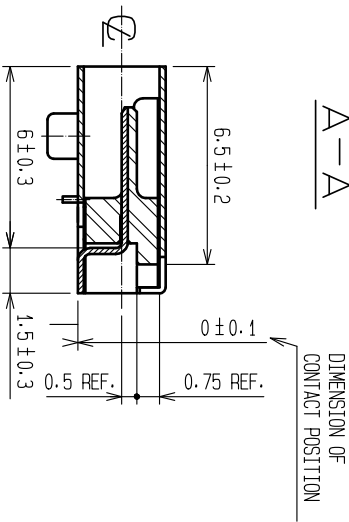
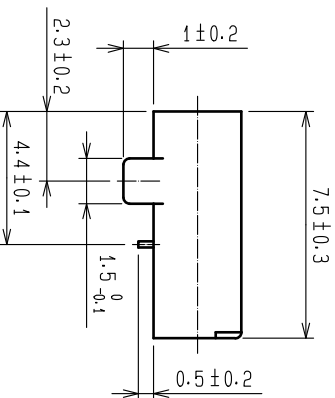
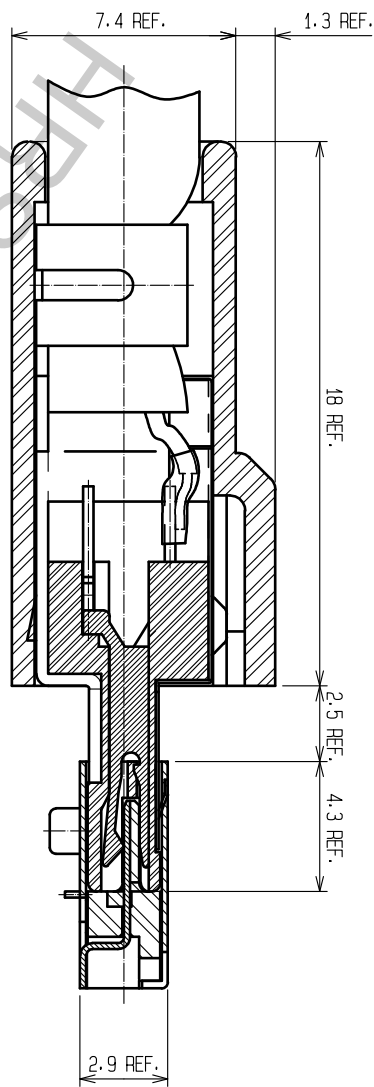
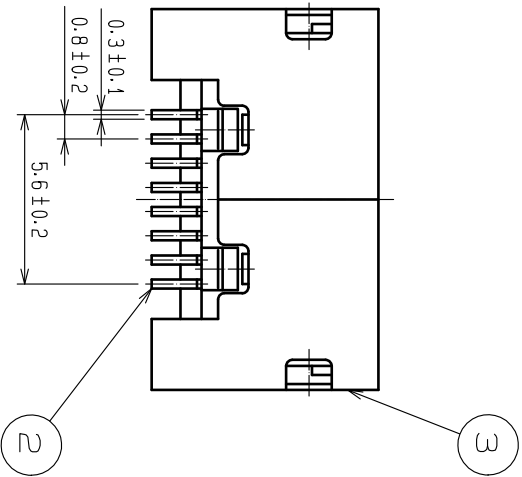
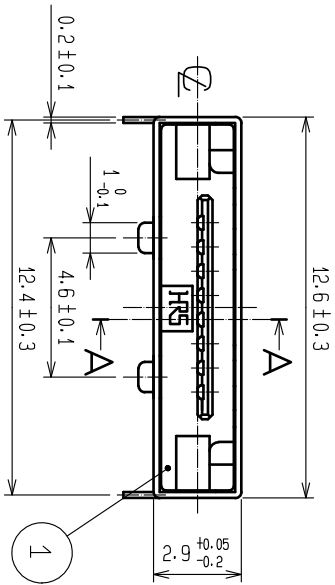
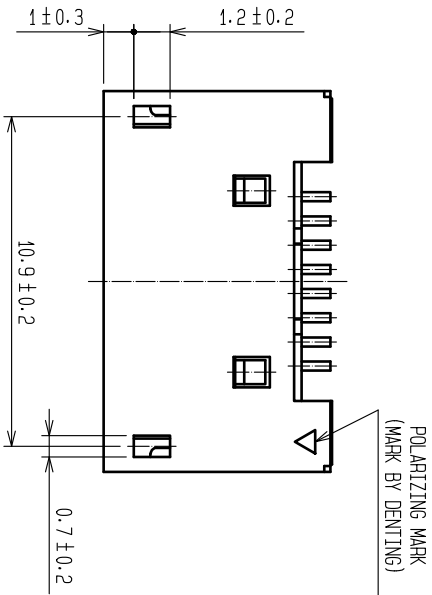
Contact us

Tel: +86-755-8981 8866 Fax: +86-755-8427 6832

Email & Skype: info@chipsmall.com Web: www.chipsmall.com



Address: A1208, Overseas Decoration Building, #122 Zhenhua RD., Futian, Shenzhen, China






2 RECOMMENDED PC BOARD PATTERN
(MOUNTING SIDE)

- NOTE
1. LEAD CO-PLANARITY TO BE 0.1 MAX.
 2. TOLERANCES TO BE THE DIMENSION FOR REFERENCE UNLESS OTHERWISE SPECIFIED.
 3. THE PACKING AMOUNT AND THE PACKING FORM MIGHT CHANGE ACCORDING THE NUMBER ORDERS.

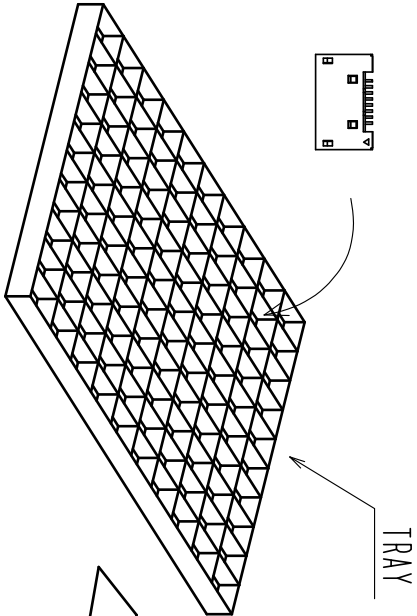
2	PHOSPHOR BRONZE	CONTACT AREA : GOLD 0.2μm MIN. MOUNTING AREA : GOLD 0.03μm MIN. UNDER PLATING : NICKEL 2μm MIN.		3	STAINLESS STEEL	MOUNTING AREA : SELECTIVE GOLD 0.03μm MIN. UNDER PLATING : NICKEL 0.2μm MIN.	
1	PPS	BLACK UL94V-0					
NO.	MATERIAL	FINISH . REMARKS			NO.	MATERIAL	FINISH . REMARKS
UNITS		SCALE	COUNT	DESCRIPTION OF REVISIONS	DESIGNED	CHECKED	DATE
mm		4 : 1					
		APPROVED : NM. NISHIMATSU	16. 04. 08	DRAWING NO.	EDC-046585-55-00		
		CHECKED : NM. NISHIMATSU	16. 04. 08	PART NO.	3260-852(55)		
		DESIGNED : P. EKSOURIYA	16. 04. 08	CODE	CL232-0009-6-55		
		DRAWN : P. EKSOURIYA	16. 04. 08	NO.			



HI ROSE
ELECTRIC
CO., LTD.

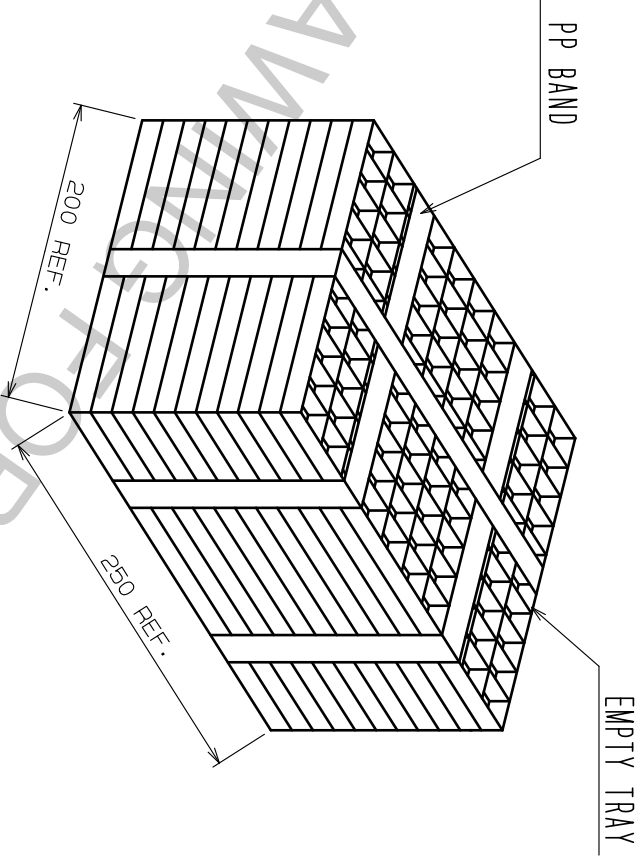
3 PACKAGING

1. THE CONNECTOR IS PUT IN A TRAY IN 100 PCS.

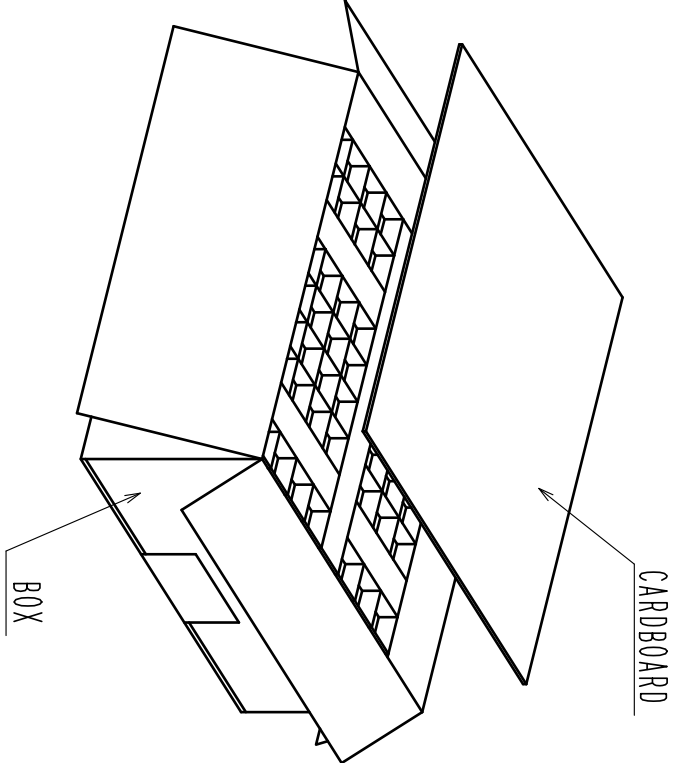


2. 10 TRAYS OF THE CONNECTOR ARE PILED UP ALTERNATELY.

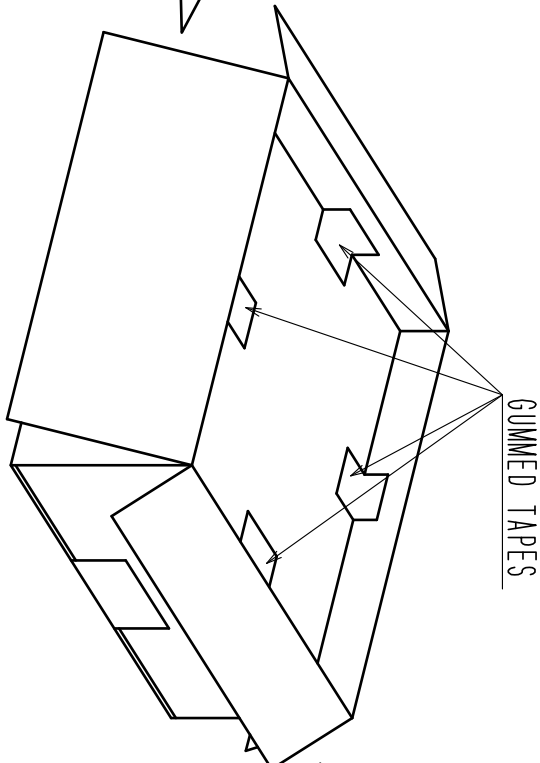
CONNECTOR QUANTITY 1000 PCS



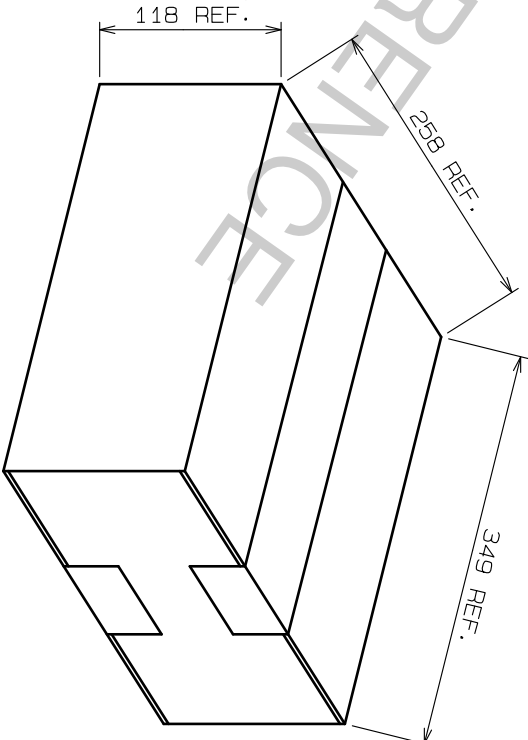
3. PILED UP A PACK OF TRAYS WHICH BANDED IN A BOX.
COVER THE TOP WITH THE CARDBOARD.



4. FASTEN UP THE BOX AND
THE CARDBOARDS WITH GUMMED TAPES.



5. CLOSE THE BOX AND FASTEN UP WITH GUMMED TAPES.



FORM HCO011-5-8 1

2

3

4

5

6

7

8

DRAWING NO.		EDC-046585-55-00	
PART NO.		3260-8S2(55)	
CODE		CL232-0009-6-55	
NO.		2/2	

HR5