



Chipsmall Limited consists of a professional team with an average of over 10 year of expertise in the distribution of electronic components. Based in Hongkong, we have already established firm and mutual-benefit business relationships with customers from,Europe,America and south Asia,supplying obsolete and hard-to-find components to meet their specific needs.

With the principle of “Quality Parts,Customers Priority,Honest Operation,and Considerate Service”,our business mainly focus on the distribution of electronic components. Line cards we deal with include Microchip,ALPS,ROHM,Xilinx,Pulse,ON,Everlight and Freescale. Main products comprise IC,Modules,Potentiometer,IC Socket,Relay,Connector.Our parts cover such applications as commercial,industrial, and automotives areas.

We are looking forward to setting up business relationship with you and hope to provide you with the best service and solution. Let us make a better world for our industry!



Contact us

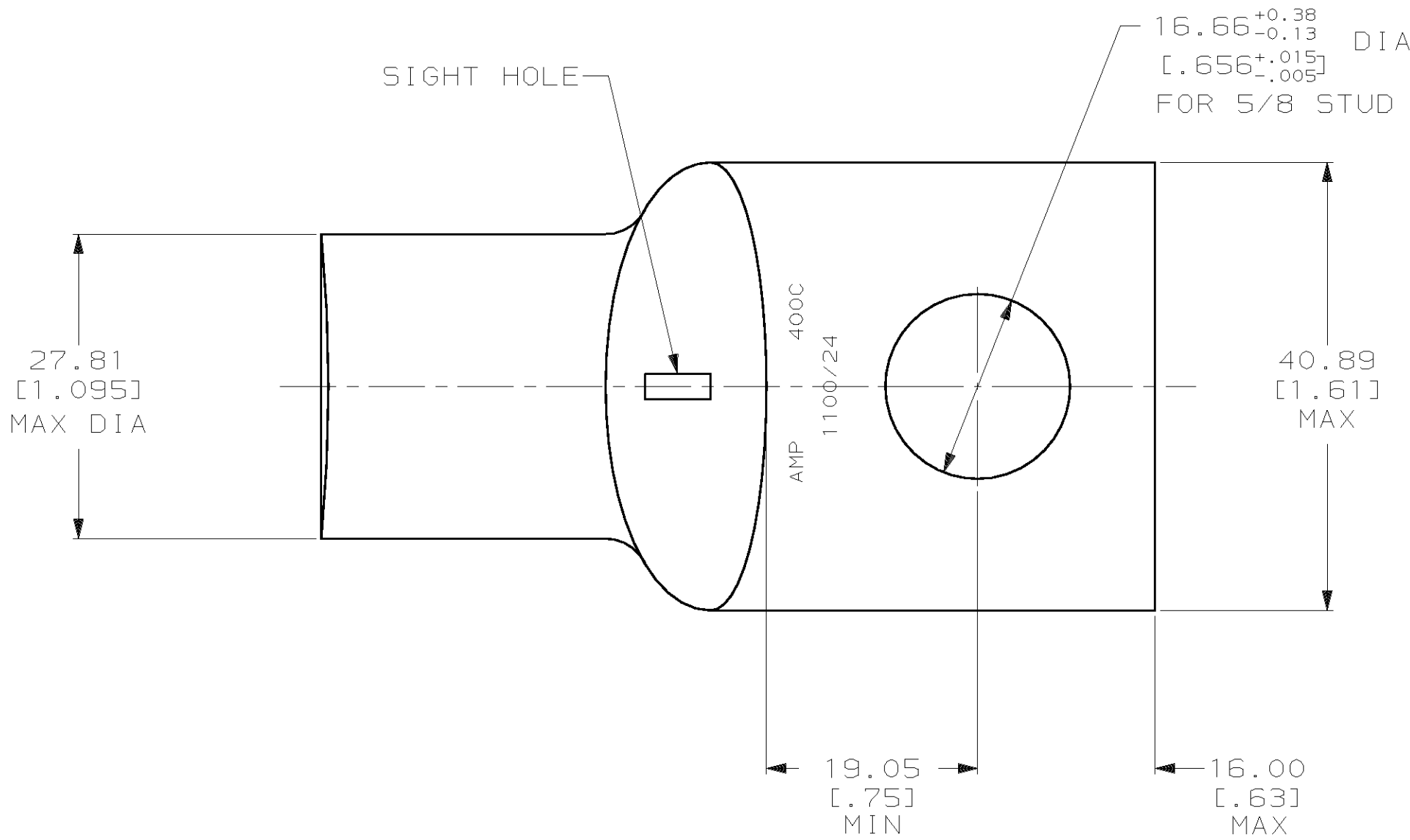
Tel: +86-755-8981 8866 Fax: +86-755-8427 6832

Email & Skype: info@chipsmall.com Web: www.chipsmall.com

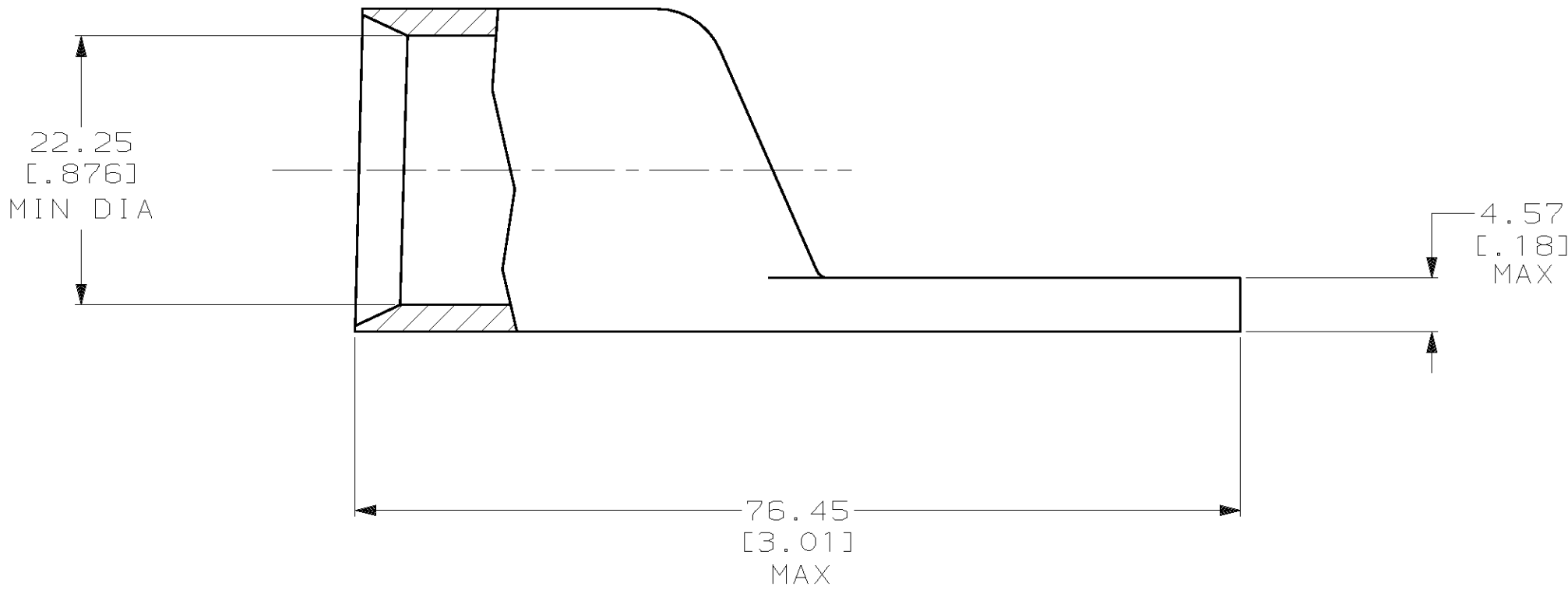
Address: A1208, Overseas Decoration Building, #122 Zhenhua RD., Futian, Shenzhen, China



LOC	DIST	P	F	REVISIONS			DATE	APPD
				ZONE	LTR	DESCRIPTION		
G	86				T	REV PER 063A-0561-01	08OCT02	JR



1 CIRCULAR MIL AREA RANGE: 375-450 MCM
2 TIN PL 0.00381 [0.000150] MIN THK PER MIL-T-10727



					326007		
					PART NO		
DO NOT SCALE PRINT. UNLESS SPECIFIED DIMENSIONS IN mm [INCHES] TOLERANCES ON : 2 PLC DEC ± 0.51[.020] 3 PLC DEC ± - ANGLES ± - MATERIAL ANNEALED COPPER ASTM B-75		DR 03/16/90 DK SCHRUM		<div>AMP</div> AMP INCORPORATED Harrisburg, Pa. 17105			
		CHK 23JAN95 MS FEHER					
		APPD 23JAN95 WJ VOCKROTH					
		APPD 23JAN95 TL SHUTTER					
		PRODUCT SPEC 108-30200		NAME TERMINAL, AMPPOWER TM WIRE SIZE: 400 MCM			
FINISH <div>2</div>		APPLICATION SPEC -					
		WEIGHT .229 LB					
		SIZE C		CAGE CODE 00779		DRAWING NO 326007	
		SCALE 2:1				SHEET 1 OF 1	