



Chipsmall Limited consists of a professional team with an average of over 10 year of expertise in the distribution of electronic components. Based in Hongkong, we have already established firm and mutual-benefit business relationships with customers from,Europe,America and south Asia,supplying obsolete and hard-to-find components to meet their specific needs.

With the principle of “Quality Parts,Customers Priority,Honest Operation,and Considerate Service”,our business mainly focus on the distribution of electronic components. Line cards we deal with include Microchip,ALPS,ROHM,Xilinx,Pulse,ON,Everlight and Freescale. Main products comprise IC,Modules,Potentiometer,IC Socket,Relay,Connector.Our parts cover such applications as commercial,industrial, and automotives areas.

We are looking forward to setting up business relationship with you and hope to provide you with the best service and solution. Let us make a better world for our industry!



Contact us

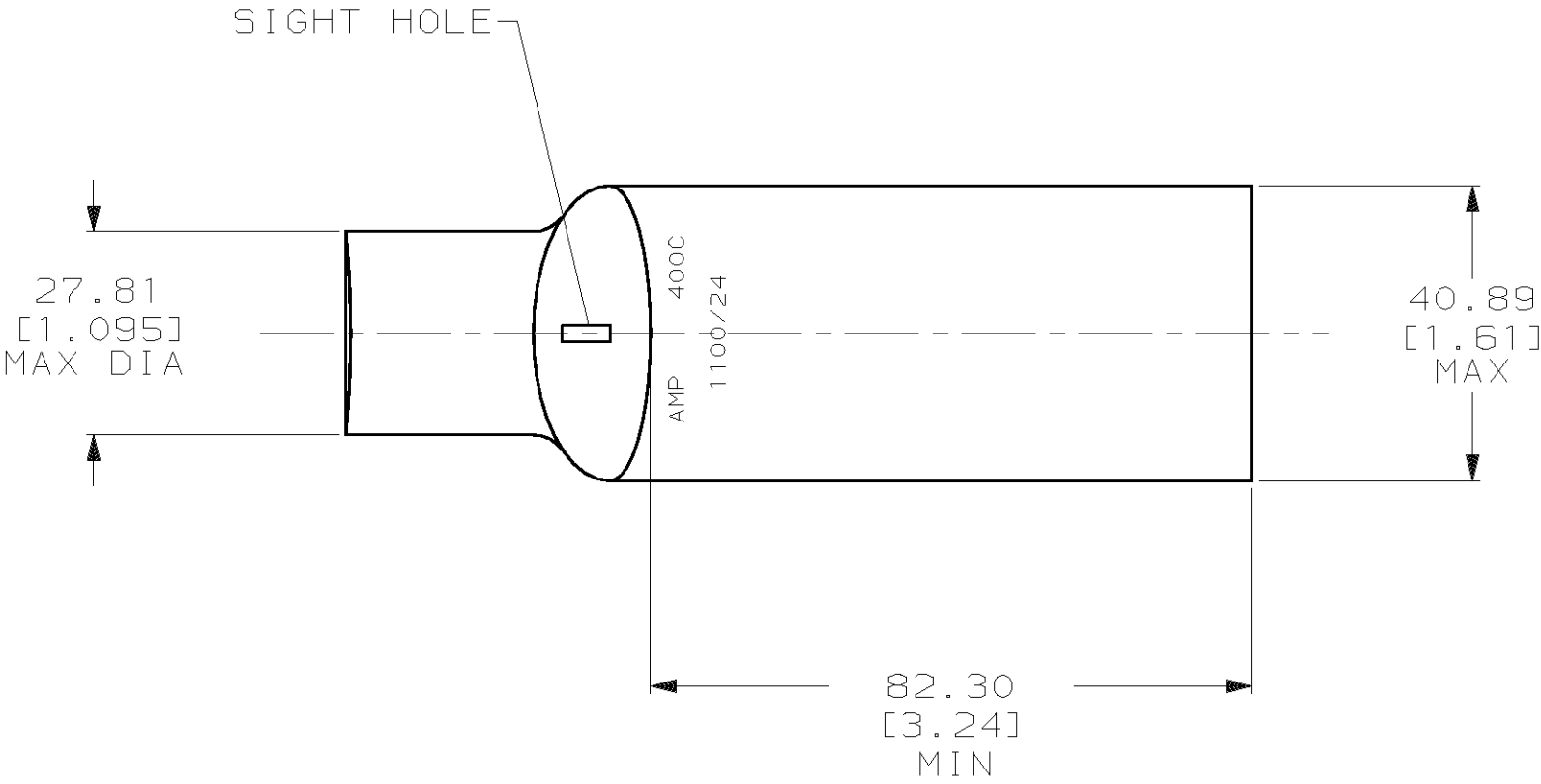
Tel: +86-755-8981 8866 Fax: +86-755-8427 6832

Email & Skype: info@chipsmall.com Web: www.chipsmall.com

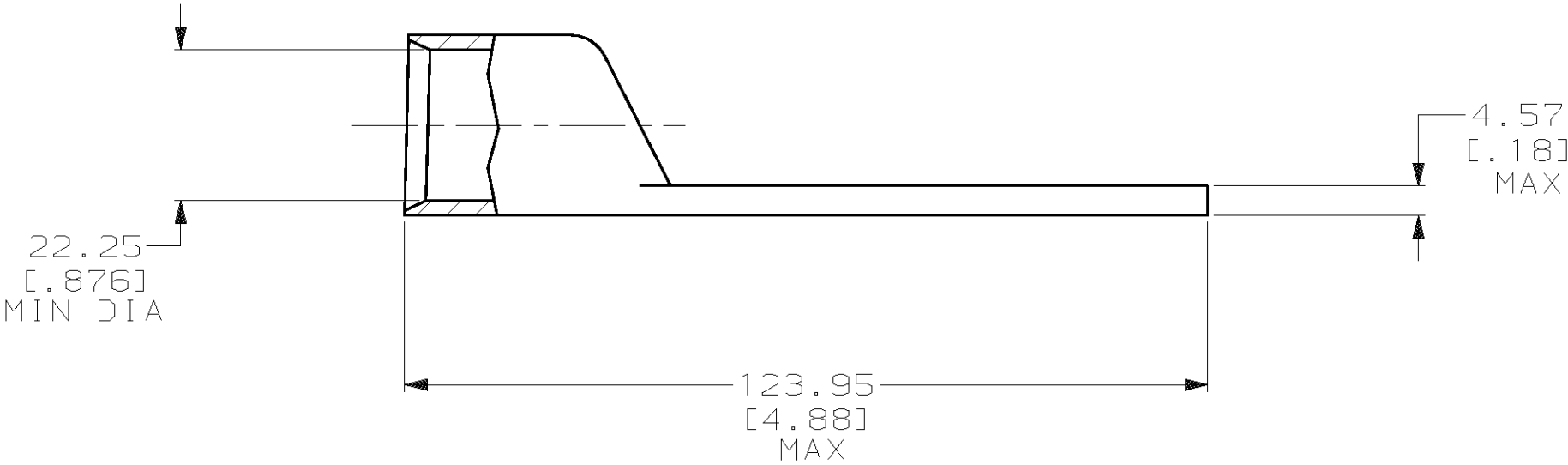
Address: A1208, Overseas Decoration Building, #122 Zhenhua RD., Futian, Shenzhen, China



LOC	DIST	P	F	REVISIONS				
				ZONE	LTR	DESCRIPTION	DATE	APPD
G	86				U	REV PER 0G3A-0561-01	08OCT02	JR



1 CIRCULAR MIL AREA RANGE: 375-450 MCM
2 TIN PL 0.00381[.000150] MIN THK PER MIL-T-10727



326016			
PART NO			
DO NOT SCALE PRINT. UNLESS SPECIFIED DIMENSIONS IN mm [INCHES] TOLERANCES ON : 2 PLC DEC ± 0.51[.020] 3 PLC DEC ± - ANGLES ± -		DR 03/16/90 DK SCHRUM CHK 23JAN95 MS FEHER APPD 23JAN95 WJ VOCKROTH APPD 23JAN95 TL SHUTTER	
MATERIAL ANNEALED COPPER ASTM B-75		NAME TERMINAL, AMPPOWER™ WIRE SIZE: 400 MCM	
FINISH 2		APPLICATION SPEC -	SIZE C
WEIGHT .403 LB		SCALE 1:1	CAGE CODE 00779
		DRAWING NO 326016	SHEET 1 OF 1