



Chipsmall Limited consists of a professional team with an average of over 10 year of expertise in the distribution of electronic components. Based in Hongkong, we have already established firm and mutual-benefit business relationships with customers from,Europe,America and south Asia,supplying obsolete and hard-to-find components to meet their specific needs.

With the principle of “Quality Parts,Customers Priority,Honest Operation,and Considerate Service”,our business mainly focus on the distribution of electronic components. Line cards we deal with include Microchip,ALPS,ROHM,Xilinx,Pulse,ON,Everlight and Freescale. Main products comprise IC,Modules,Potentiometer,IC Socket,Relay,Connector.Our parts cover such applications as commercial,industrial, and automotives areas.

We are looking forward to setting up business relationship with you and hope to provide you with the best service and solution. Let us make a better world for our industry!



Contact us

Tel: +86-755-8981 8866 Fax: +86-755-8427 6832

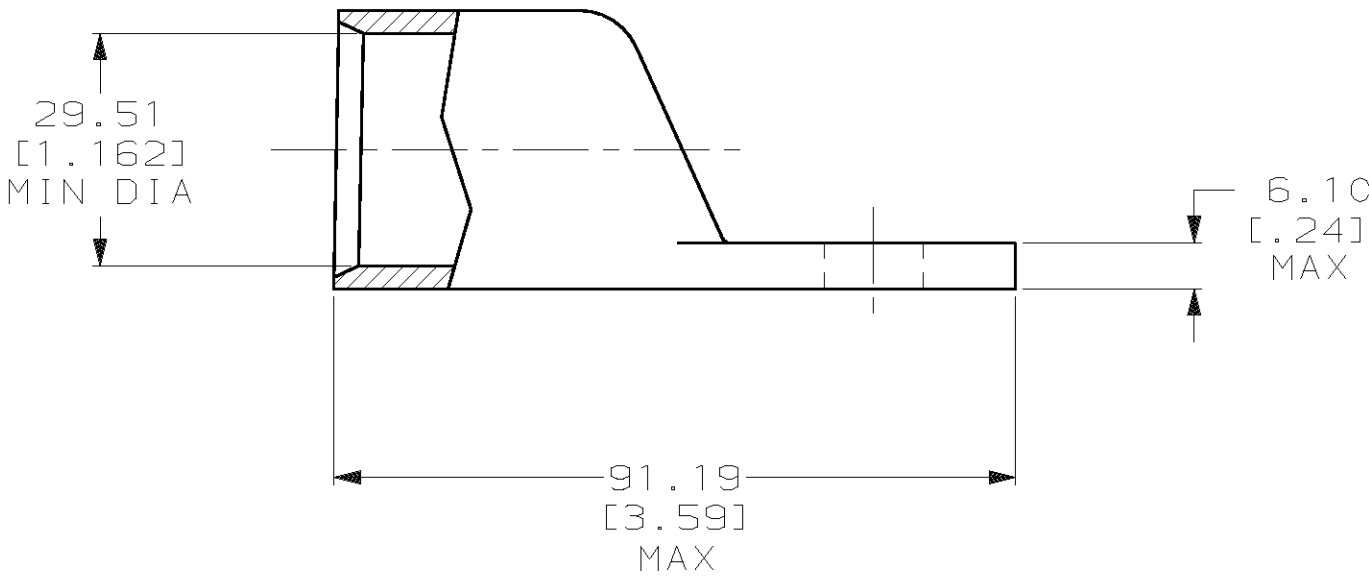
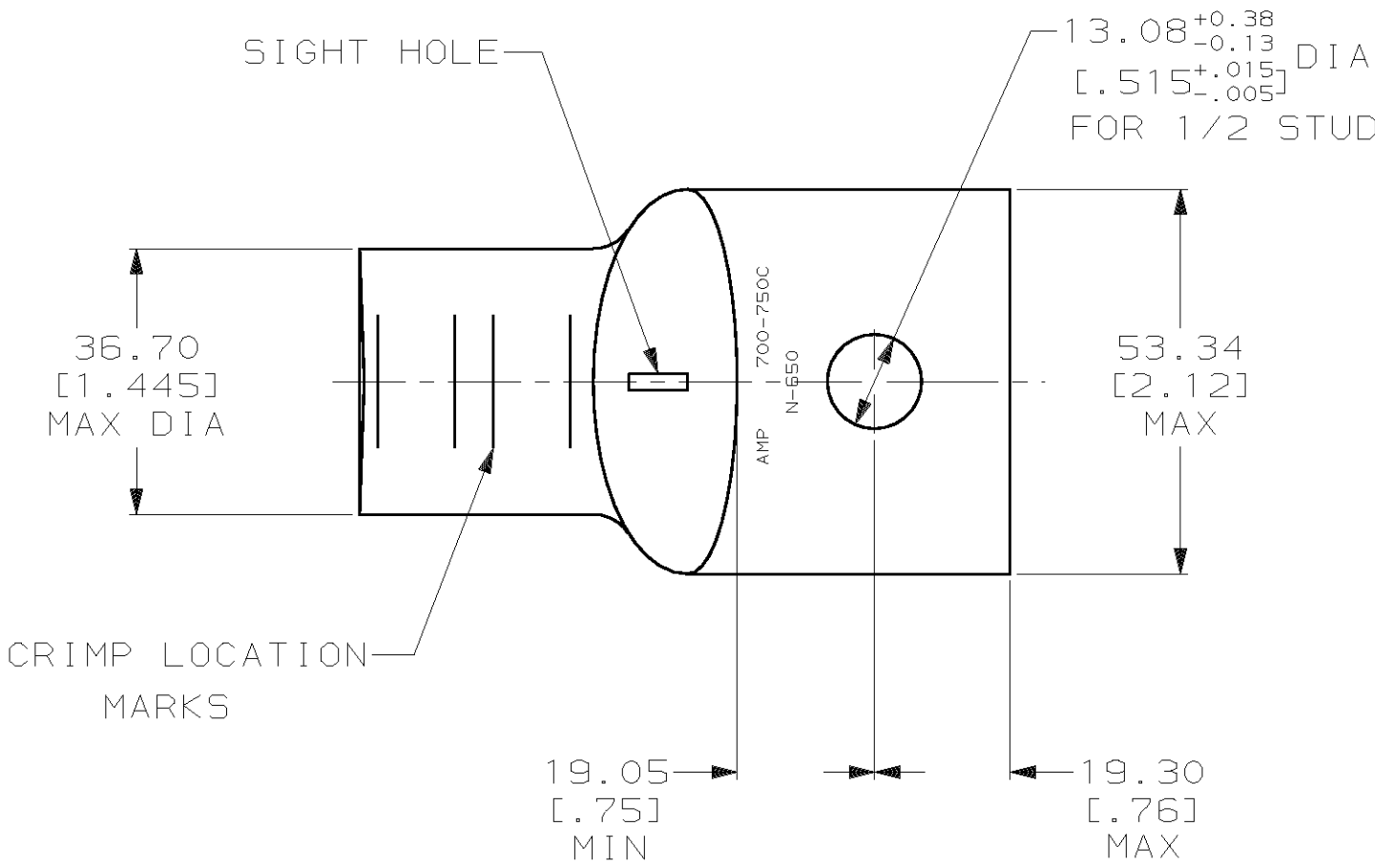
Email & Skype: info@chipsmall.com Web: www.chipsmall.com

Address: A1208, Overseas Decoration Building, #122 Zhenhua RD., Futian, Shenzhen, China



THIS DRAWING IS UNPUBLISHED. RELEASED FOR PUBLICATION ,19 .
© COPYRIGHT 19 BY AMP INCORPORATED. ALL INTERNATIONAL RIGHTS RESERVED.

LOC	DIST	P	F	REVISIONS				
				ZONE	LTR	DESCRIPTION	DATE	APPD
G	86				H	REV PER 0G3A-0561-01	08OCT02	JR/MS



- 1 CIRCULAR MIL RANGE: 650-750 MCM
2 TIN PL 0.00381 [.000150] MIN THK PER MIL-T-10727



326305			
PART NO			
DO NOT SCALE PRINT. UNLESS SPECIFIED DIMENSIONS IN mm [INCHES] TOLERANCES ON : 2 PLC DEC ± 0.51 [.020] 3 PLC DEC ± - ANGLES ± -		DR 02/28/90 DK SCHRUM CHK 25JAN95 MS FEHER APPD 25JAN95 WJ VOCKROTH APPD 25JAN95 TL SHUTTER PRODUCT SPEC 108-30200 APPLICATION SPEC - WEIGHT .493 LB	
ANNEALED COPPER ASTM B-75		AMP INCORPORATED Harrisburg, Pa. 17105	
FINISH		NAME	
△		TERMINAL, AMPPOWER™ WIRE SIZE: 700 MCM	
SIZE		CAGE CODE	DRAWING NO
C		00779	326305
SCALE		2:1	SHEET 1 OF 1