



Chipsmall Limited consists of a professional team with an average of over 10 year of expertise in the distribution of electronic components. Based in Hongkong, we have already established firm and mutual-benefit business relationships with customers from,Europe,America and south Asia,supplying obsolete and hard-to-find components to meet their specific needs.

With the principle of “Quality Parts,Customers Priority,Honest Operation,and Considerate Service”,our business mainly focus on the distribution of electronic components. Line cards we deal with include Microchip,ALPS,ROHM,Xilinx,Pulse,ON,Everlight and Freescale. Main products comprise IC,Modules,Potentiometer,IC Socket,Relay,Connector.Our parts cover such applications as commercial,industrial, and automotives areas.

We are looking forward to setting up business relationship with you and hope to provide you with the best service and solution. Let us make a better world for our industry!



Contact us

Tel: +86-755-8981 8866 Fax: +86-755-8427 6832

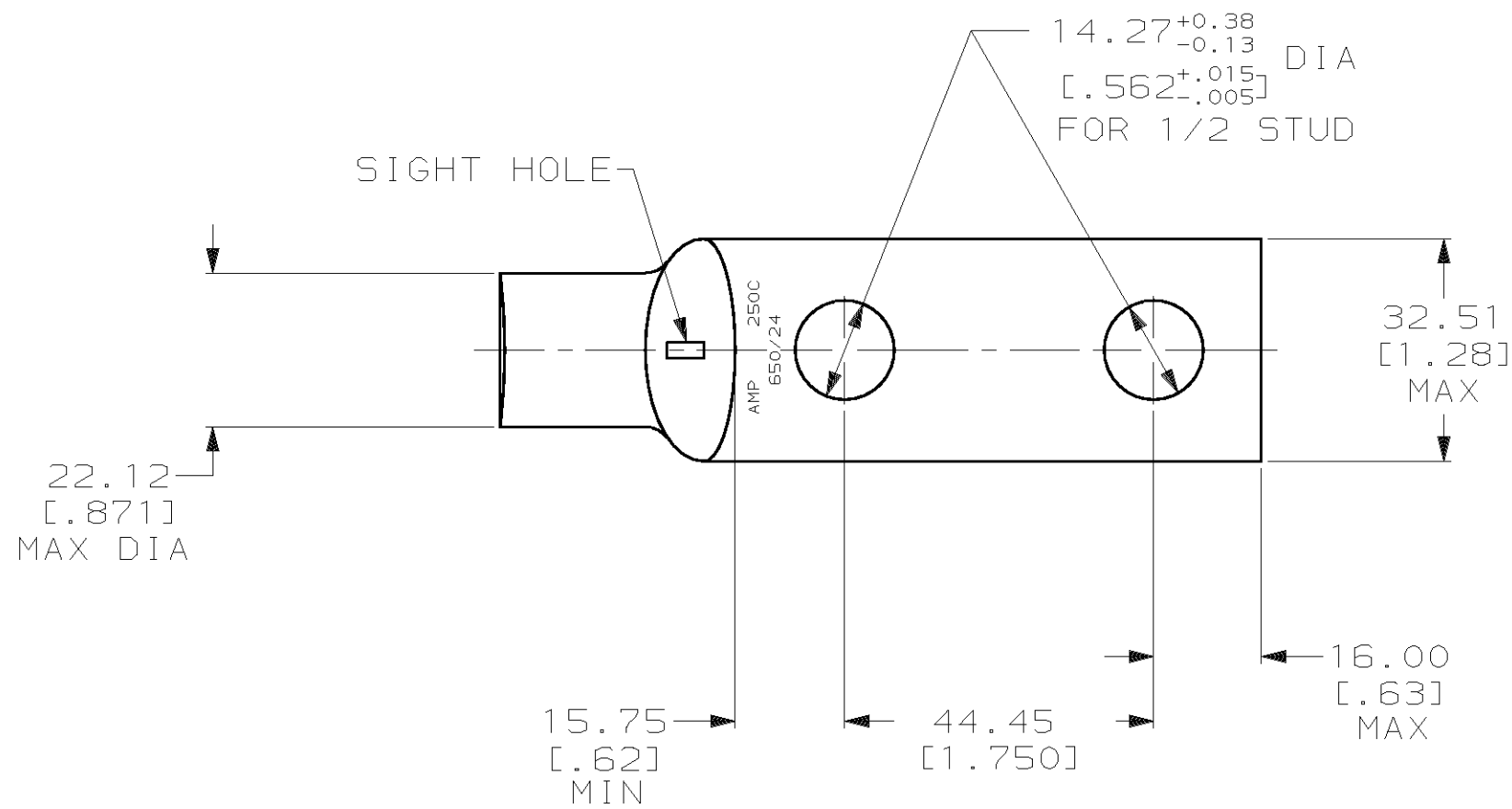
Email & Skype: info@chipsmall.com Web: www.chipsmall.com

Address: A1208, Overseas Decoration Building, #122 Zhenhua RD., Futian, Shenzhen, China

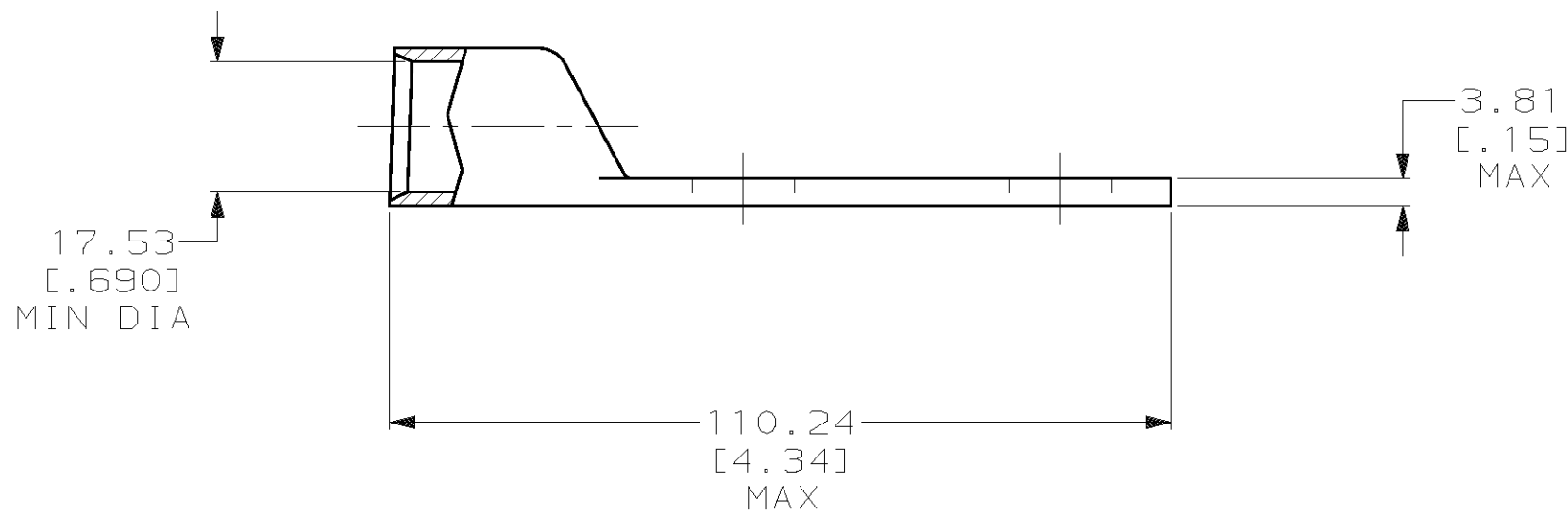


THIS DRAWING IS UNPUBLISHED. RELEASED FOR PUBLICATION ,19 .
© COPYRIGHT 19 BY AMP INCORPORATED. ALL INTERNATIONAL RIGHTS RESERVED.

LOC	DIST	P	F	REVISIONS				
				ZONE	LTR	DESCRIPTION	DATE	APPD
G	86				M	REV PER 063A-0561-01	09OCT02	JR/MS



- 1 CIRCULAR MIL AREA RANGE: 231-275 MCM
- 2 TIN PL 0.00381 [0.000150] MIN THK PER ASTM B545
- 3 CLEANED, UNPLATED
- 4 PREPRODUCTION - FASR REQ



3	4	327285-2
2		327285
FINISH	PART NO	

DO NOT SCALE PRINT. UNLESS SPECIFIED DIMENSIONS IN mm [INCHES] TOLERANCES ON : 2 PLC DEC ± 0.51[.020] 3 PLC DEC ± - ANGLES ± -	DR 02/28/90 DK SCHRUM	<div>AMP</div> AMP INCORPORATED Harrisburg, Pa. 17105		
	CHK 20JAN95 MS FEHER			
	APPD 20JAN95 WJ VOCKROTH	NAME TERMINAL, AMPPOWER TM WIRE SIZE: 250 MCM		
APPD 20JAN95 TL SHUTTER				
PRODUCT SPEC 108-30200				
MATERIAL ANNEALED COPPER ASTM B-75	APPLICATION SPEC -	SIZE C	CAGE CODE 00779	DRAWING NO 327285
	WEIGHT .201 LB	SCALE 1:1	SHEET 1 OF 1	
	FINISH SEE TABLE			

