



Chipsmall Limited consists of a professional team with an average of over 10 year of expertise in the distribution of electronic components. Based in Hongkong, we have already established firm and mutual-benefit business relationships with customers from,Europe,America and south Asia,supplying obsolete and hard-to-find components to meet their specific needs.

With the principle of “Quality Parts,Customers Priority,Honest Operation,and Considerate Service”,our business mainly focus on the distribution of electronic components. Line cards we deal with include Microchip,ALPS,ROHM,Xilinx,Pulse,ON,Everlight and Freescale. Main products comprise IC,Modules,Potentiometer,IC Socket,Relay,Connector.Our parts cover such applications as commercial,industrial, and automotives areas.

We are looking forward to setting up business relationship with you and hope to provide you with the best service and solution. Let us make a better world for our industry!



Contact us

Tel: +86-755-8981 8866 Fax: +86-755-8427 6832

Email & Skype: info@chipsmall.com Web: www.chipsmall.com

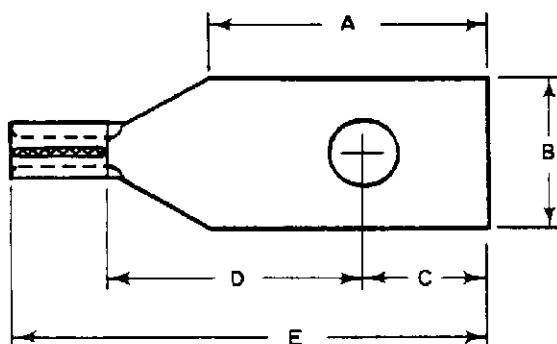
Address: A1208, Overseas Decoration Building, #122 Zhenhua RD., Futian, Shenzhen, China





A-MP SOLISTRAND TERMINALS FOR BU-SHIPS TERMINAL BLOCKS

IS 1088	
RELEASED	9-2-59
REVISED	4-20-60



Listed below are A-MP Long Barrel Solistrand Terminals for Bu-Ship Terminal Blocks. See A-MP Instruction Sheet No. 1198 for PIDG and Instruction Sheet No. 1207 for Diamond Grip (DG) Part Numbers.

BU-SHIPS BLOCKS	NAVY TONGUE SHAPE	NAVY WIRE SIZE	AWG WIRE SIZE	A ± .031	B ± .005	C ± .010	D MIN.	E MAX.	STUD SIZE	AMP PART NUMBER
3TB, 4TB 5TB, 16TB 17TB	L80	1-2	22-16	.701	.390	.321	.621	1.234	8	328351
		2½-4	16-14	.701	.390	.321	.621	1.234	8	328352
		6-9	12-10	.701	.390	.321	.621	1.234	8	328032
6TB, 7TB 9TB	L81	1-2	22-16	.482	.302	.227	.465	.984	6	328353
		2½-4	16-14	.482	.302	.227	.465	.984	6	328354
		6-9	12-10	.482	.302	.227	.465	.984	6	328035
15TB	L82	1-2	22-16	.482	.302	.227	.465	.984	8	328355
		2½-4	16-14	.482	.302	.227	.465	.984	8	328356
		6-9	12-10	.482	.302	.227	.465	.984	8	328038
8TB	L83	1-2	22-16	.328	.277	.167	.277	.734	5	328357
		2½-4	16-14	.328	.277	.167	.277	.734	5	328358
		6-9	12-10	.328	.277	.167	.277	.734	5	328041
10TB & 11TB	L84	1-2	22-16	.450	.237	.195	.404	.890	6	328359
		2½-4	16-14	.450	.237	.195	.404	.890	6	328360
		6-9	12-10	.450	.237	.195	.404	.890	6	328044
25TB	L85	1-2	22-16	.450	.237	.195	.404	.890	4	328361
		2½-4	16-14	.450	.237	.195	.404	.890	4	328362
		6-9	12-10	.450	.237	.195	.404	.890	4	328047
26TB	L86	1-2	22-16	.296	.237	.143	.237	.671	4	328363
		2½-4	16-14	.296	.237	.143	.237	.671	4	328364
		6-9	12-10	.296	.237	.143	.237	.671	4	328050

© Copyright 1960 by AMP Incorporated. All international rights reserved. A-MP® U. S. A. and foreign. A-MP® products covered by U. S. and foreign patents and/or patents pending.