



Chipsmall Limited consists of a professional team with an average of over 10 year of expertise in the distribution of electronic components. Based in Hongkong, we have already established firm and mutual-benefit business relationships with customers from,Europe,America and south Asia,supplying obsolete and hard-to-find components to meet their specific needs.

With the principle of “Quality Parts,Customers Priority,Honest Operation,and Considerate Service”,our business mainly focus on the distribution of electronic components. Line cards we deal with include Microchip,ALPS,ROHM,Xilinx,Pulse,ON,Everlight and Freescale. Main products comprise IC,Modules,Potentiometer,IC Socket,Relay,Connector.Our parts cover such applications as commercial,industrial, and automotives areas.

We are looking forward to setting up business relationship with you and hope to provide you with the best service and solution. Let us make a better world for our industry!



## Contact us

Tel: +86-755-8981 8866 Fax: +86-755-8427 6832

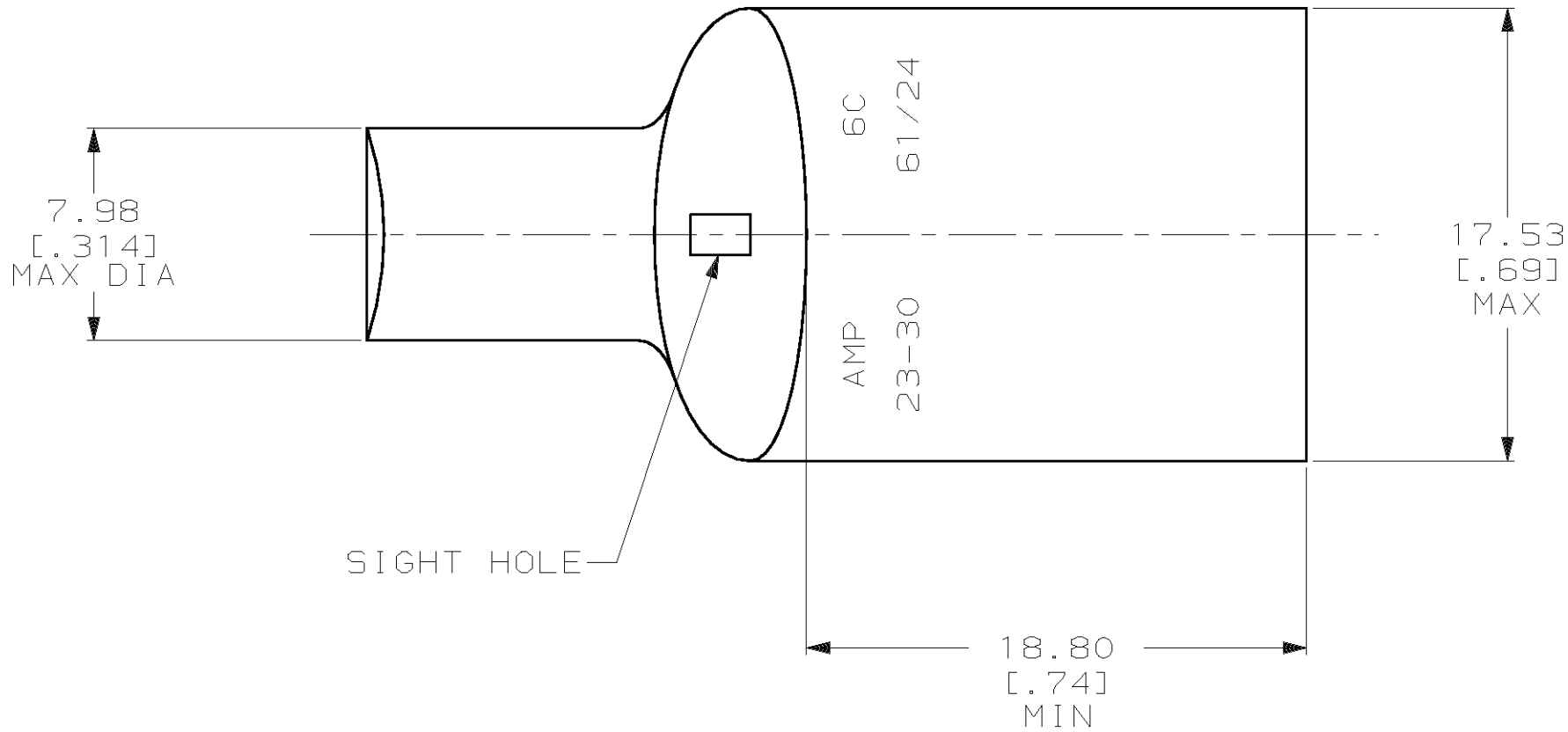
Email & Skype: [info@chipsmall.com](mailto:info@chipsmall.com) Web: [www.chipsmall.com](http://www.chipsmall.com)

Address: A1208, Overseas Decoration Building, #122 Zhenhua RD., Futian, Shenzhen, China

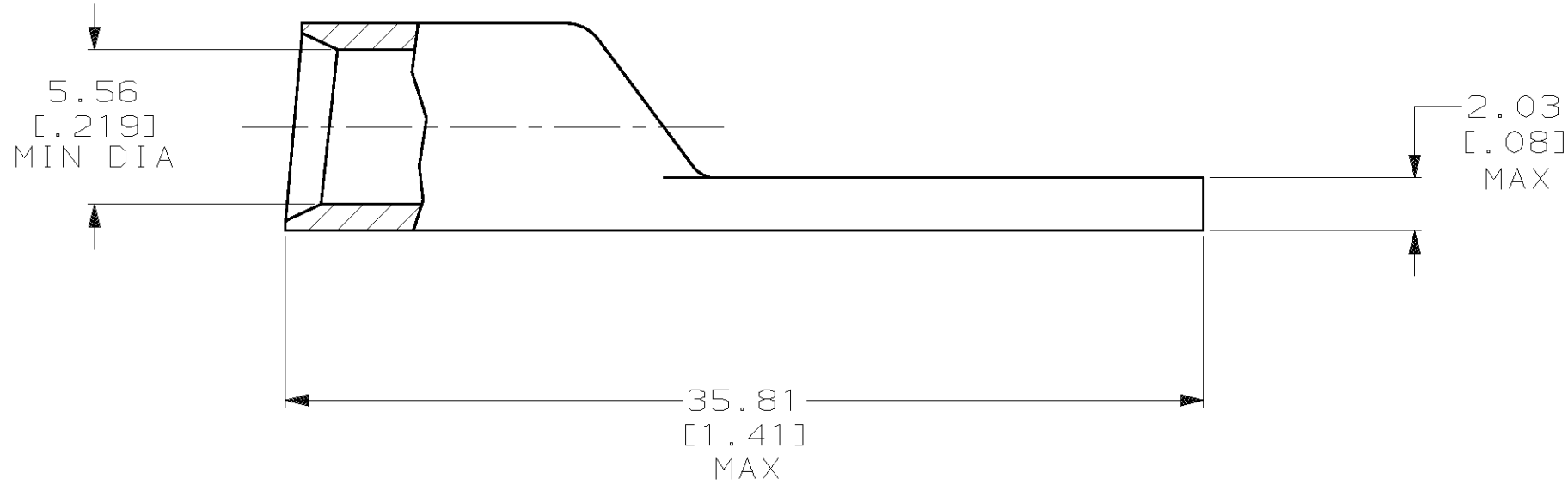


THIS DRAWING IS UNPUBLISHED. RELEASED FOR PUBLICATION ,19 .  
© COPYRIGHT 19 BY AMP INCORPORATED. ALL INTERNATIONAL RIGHTS RESERVED.

LOC	DIST	P	F	REVISIONS				
				ZONE	LTR	DESCRIPTION	DATE	APPD
G	86				S	REV / 0G10-0059-99	26APR99	ME/TM



1 CIRCULAR MIL AREA RANGE: 20,800-33,100 CM  
2 TIN PL 0.00381[.000150] THK PER ASTM B 545



				PART NO		
DO NOT SCALE PRINT. UNLESS SPECIFIED DIMENSIONS IN mm [INCHES] TOLERANCES ON : 2 PLC DEC ± 0.51 [.020] 3 PLC DEC ± - ANGLES ± -  MATERIAL  ANNEALED COPPER ASTM B-152		DR 02/28/90 DK SCHRUM		<div>AMP</div> AMP INCORPORATED Harrisburg, Pa. 17105		
		CHK 19JAN95 MS FEHER				
		APPD 19JAN95 WJ VOCKROTH				
		APPD 19JAN95 TL SHUTTER		NAME  TERMINAL, AMPPOWER™,  WIRE SIZE: 6 AWG		
		PRODUCT SPEC  108-30200				
FINISH <div>2</div>		APPLICATION SPEC  -				SIZE C
		WEIGHT .017 LB		SCALE 4:1		SHEET 1 OF 1