



Chipsmall Limited consists of a professional team with an average of over 10 year of expertise in the distribution of electronic components. Based in Hongkong, we have already established firm and mutual-benefit business relationships with customers from,Europe,America and south Asia,supplying obsolete and hard-to-find components to meet their specific needs.

With the principle of “Quality Parts,Customers Priority,Honest Operation,and Considerate Service”,our business mainly focus on the distribution of electronic components. Line cards we deal with include Microchip,ALPS,ROHM,Xilinx,Pulse,ON,Everlight and Freescale. Main products comprise IC,Modules,Potentiometer,IC Socket,Relay,Connector.Our parts cover such applications as commercial,industrial, and automotives areas.

We are looking forward to setting up business relationship with you and hope to provide you with the best service and solution. Let us make a better world for our industry!



Contact us

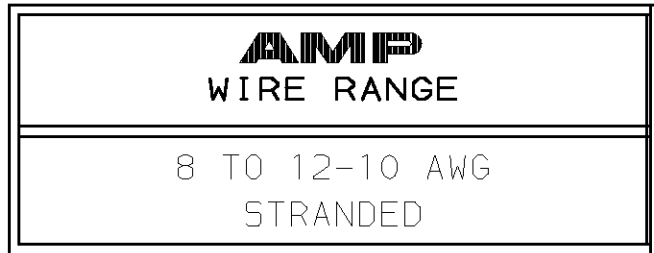
Tel: +86-755-8981 8866 Fax: +86-755-8427 6832

Email & Skype: info@chipsmall.com Web: www.chipsmall.com

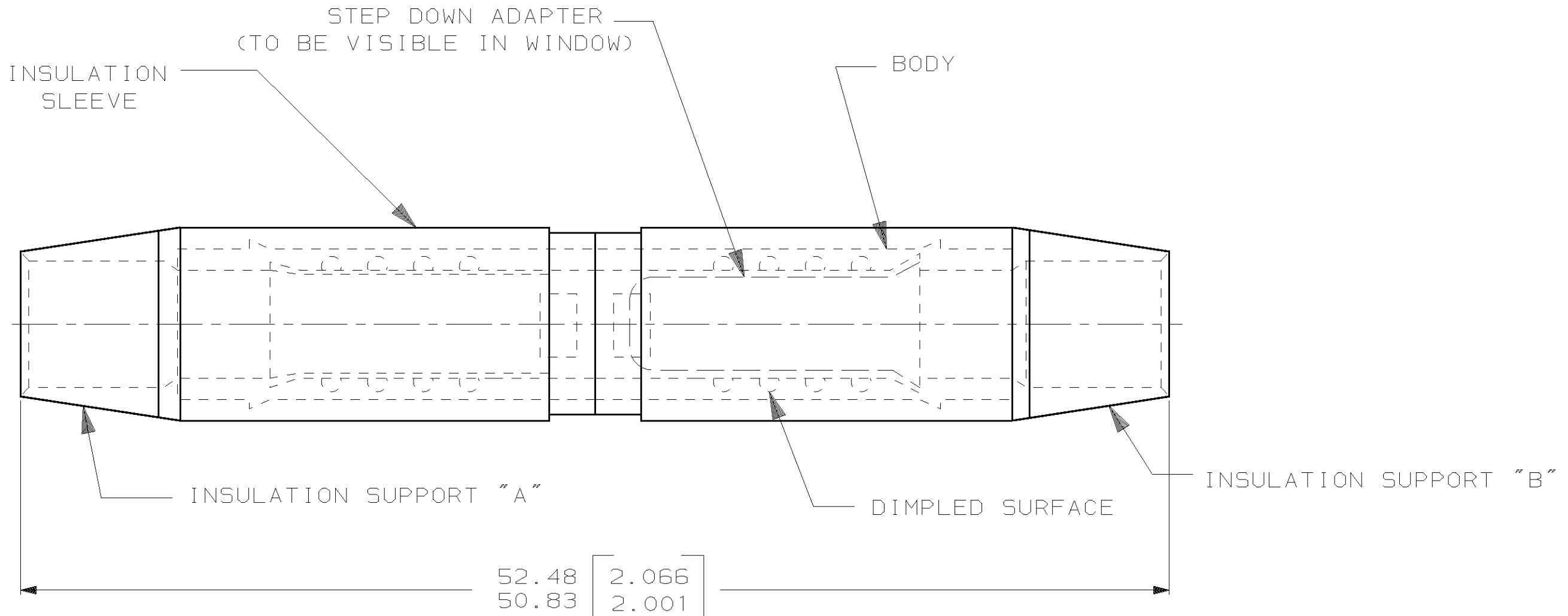
Address: A1208, Overseas Decoration Building, #122 Zhenhua RD., Futian, Shenzhen, China



LOC	DIST	P	F	ZONE	LTR	DESCRIPTION	DATE	APPD
G	14					REV PER 063A-0284-02	14MAY02	MS



1 WIRE INSULATION DIA 6.48 [.255] MAX



100	LOOSE PC	328569
QTY	PACKAGE TYPE	PART NO

**AMP INCORPORATED
 CUSTOMER SERVICE SYSTEMS**

MAX RECOMMENDED OPERATING TEMPERATURE:
 105°C MAX

DO NOT SCALE PRINT. UNLESS SPECIFIED DIMENSIONS IN MM [INCHES] TOLERANCES ON:
 2 PLC DEC ± .008
 3 PLC DEC ± -
 ANGLES ± -

DR 14MAY02 JR RUTH
 CHK 14MAY02 MS FEHER
 APPD 14MAY02 T MICHIELUTTI

AMP AMP Incorporated
 Harrisburg, PA 17105-3608

FOR ADDITIONAL PRODUCT INFORMATION OR COPIES OF DRAWINGS AND TECHNICAL DOCUMENTS

PRODUCT INFORMATION CENTER
 1-800-522-6752

VOLTAGE RATING:
 600 V MAX

MATERIAL
 COPPER PER ASTM B-152
 NYLON,
 SUPPORT "A" COLOR, RED
 SUPPORT "B" COLOR, YELLOW
 SLEEVE, COLOR, RED

APPD 14MAY02 T MICHIELUTTI
 PRODUCT SPEC -

NAME
 SPLICE, BUTT, STEP-DOWN,
 SINGLE TO SINGLE,
 TERMINYL, WIRE SIZE 8 TO 12-10 AWG

FOR APPLICATION TOOLING INFORMATION

TOOLING ASSISTANCE CENTER
 1-800-722-1111

WIRE CROSS SECTIONAL AREA RANGE:
 6.64-10.54mm² TO 2.62-6.64mm²
 STRANDED

FINISH
 TIN PLATE
 PER ASTM B-545

APPLICATION SPEC -

SIZE C CAGE CODE 00779 DRAWING NO C-328569

FOR ORDER ENTRY

1-800-526-5142

THIS DRAWING IS A CONTROLLED DOCUMENT FOR AMP INCORPORATED. IT IS SUBJECT TO CHANGE AND THE CONTROLLING ENGINEERING ORGANIZATION SHOULD BE CONTACTED FOR THE LATEST REVISION.

WEIGHT -

SCALE 4:1

SHEET 1 OF 1