



Chipsmall Limited consists of a professional team with an average of over 10 year of expertise in the distribution of electronic components. Based in Hongkong, we have already established firm and mutual-benefit business relationships with customers from,Europe,America and south Asia,supplying obsolete and hard-to-find components to meet their specific needs.

With the principle of “Quality Parts,Customers Priority,Honest Operation,and Considerate Service”,our business mainly focus on the distribution of electronic components. Line cards we deal with include Microchip,ALPS,ROHM,Xilinx,Pulse,ON,Everlight and Freescale. Main products comprise IC,Modules,Potentiometer,IC Socket,Relay,Connector.Our parts cover such applications as commercial,industrial, and automotives areas.

We are looking forward to setting up business relationship with you and hope to provide you with the best service and solution. Let us make a better world for our industry!



Contact us

Tel: +86-755-8981 8866 Fax: +86-755-8427 6832

Email & Skype: info@chipsmall.com Web: www.chipsmall.com

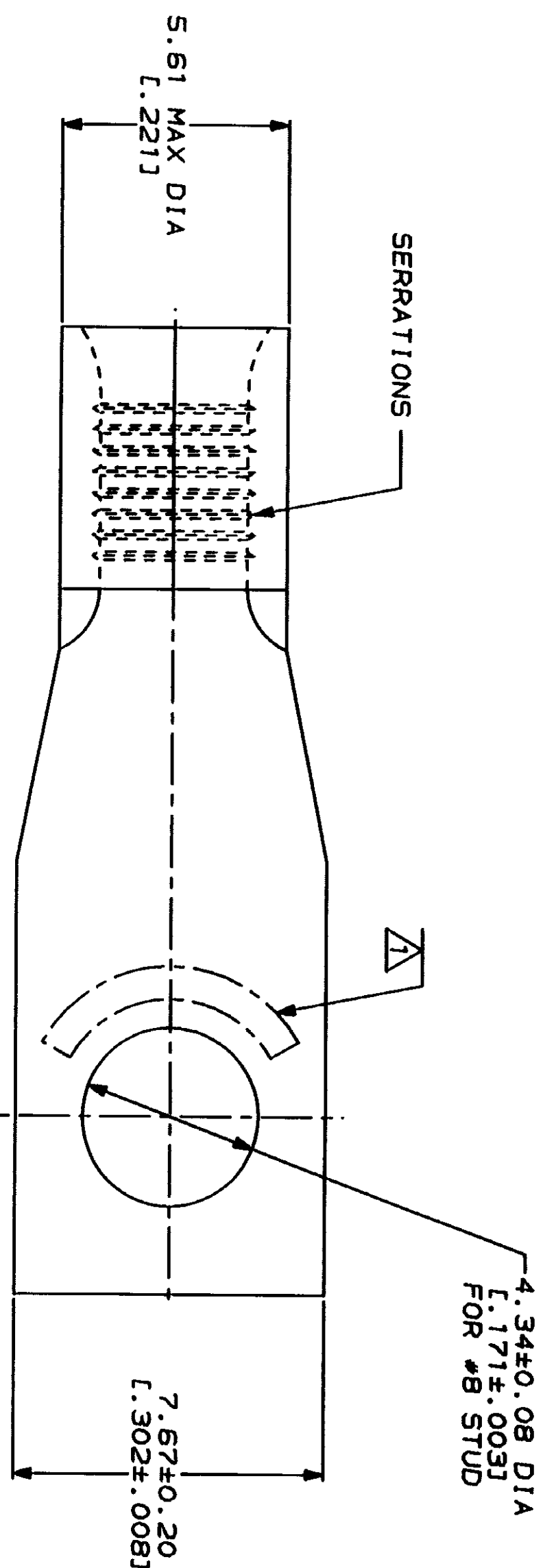
Address: A1208, Overseas Decoration Building, #122 Zhenhua RD., Futian, Shenzhen, China






REVISIONS					
P	R	ZONE	DESCRIPTION	DATE	APP
		A	REVISED PER 0720-0230-93	2/28/94	WDP

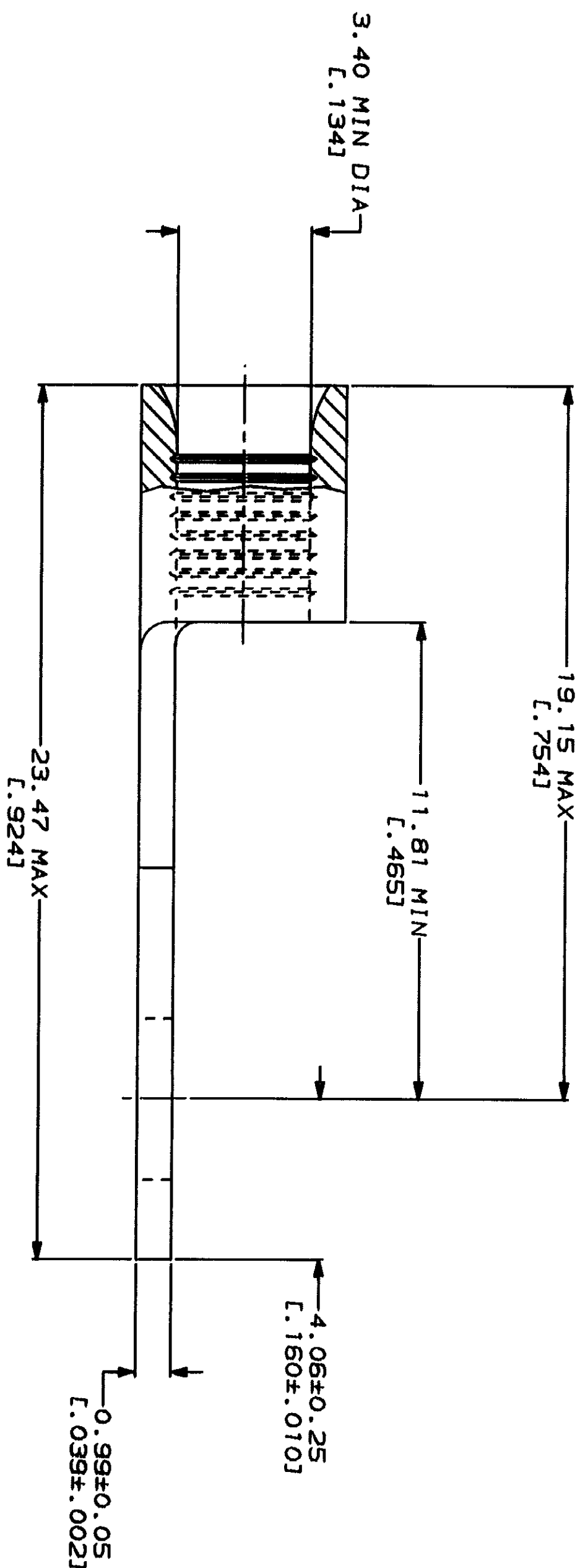
METRIC

DIMENSIONS LISTED IN mm [INCHES]



 WIRE RANGE	 E13288 Listed
12-10 AWG STRANDED	12-10 AWG STRANDED
 LR7189 Certified	MILITARY P/N AND CLASS
NOT CERTIFIED	NOT APPLICABLE

1 STAMP AMP 12-10* APPROX AS SHOWN



AMP INCORPORATED
CUSTOMER SERVICE SYSTEMS

PRODUCT INFORMATION OR
COPIES OF DRAWINGS
AND TECHNICAL DOCUMENTS

PRODUCT INFORMATION CENTER
1-800-522-6752

FOR APPLICATION TOOLING INFORMATION	TOOLING ASSISTANCE CENTER 1-800-722-1111
--	---

FOR ORDER ENTRY

MAX RECOMMENDED OPERATING TEMPERATURE:

170°C MAX

VOLTAGE RATING:

NOT APPLICABLE

WIRE CROSS SECTIONAL AREA RANGE:

STANDARD

100-443887-100

DO NOT SCALE PRINT.
UNLESS SPECIFIED
DIMENSIONS IN INCHES

TOLERANCES ON :
3 BA C DEC +

5 FEB 1961
ANGLER

COPPER PER

ANNEALED

FINISH
TIN PLATE

TK PER MIL-T-10727

1

AMP Incorporated
Harrisburg, PA 17105-3608

TERMINAL, RECTANGULAR
TONGUE, BUDGET

CUSTOMER DRAWING