



Chipsmall Limited consists of a professional team with an average of over 10 year of expertise in the distribution of electronic components. Based in Hongkong, we have already established firm and mutual-benefit business relationships with customers from,Europe,America and south Asia,supplying obsolete and hard-to-find components to meet their specific needs.

With the principle of “Quality Parts,Customers Priority,Honest Operation,and Considerate Service”,our business mainly focus on the distribution of electronic components. Line cards we deal with include Microchip,ALPS,ROHM,Xilinx,Pulse,ON,Everlight and Freescale. Main products comprise IC,Modules,Potentiometer,IC Socket,Relay,Connector.Our parts cover such applications as commercial,industrial, and automotives areas.

We are looking forward to setting up business relationship with you and hope to provide you with the best service and solution. Let us make a better world for our industry!



Contact us

Tel: +86-755-8981 8866 Fax: +86-755-8427 6832

Email & Skype: info@chipsmall.com Web: www.chipsmall.com

Address: A1208, Overseas Decoration Building, #122 Zhenhua RD., Futian, Shenzhen, China

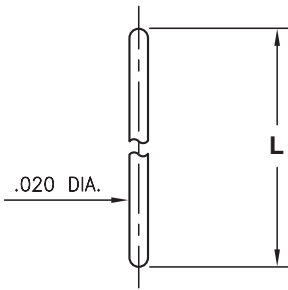


MALE PCB PINS

STRAIGHT PINS

3320

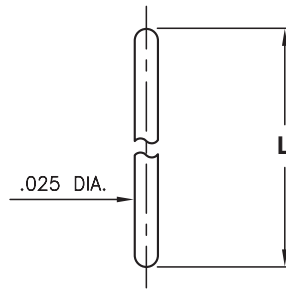
3320-X-00-XX-00-00-03-0



Basic Part Number	Length L
3320-0	.250
3320-1	.500

3325/6527

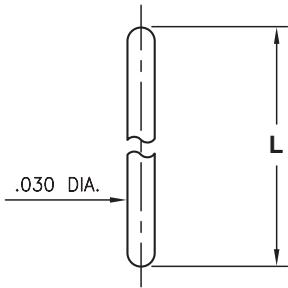
XXXX-X-00-XX-00-00-03-0



Basic Part Number	Length L
3325-0	.250
3325-1	.500
3325-2	.750
6527-0	.420

3330

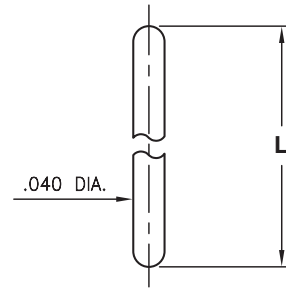
3330-X-00-XX-00-00-03-0



Basic Part Number	Length L
3330-0	.250
3330-1	.500
3330-2	.750

3340

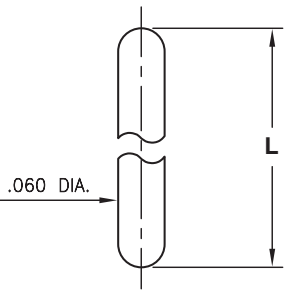
3340-X-00-XX-00-00-03-0



Basic Part Number	Length L
3340-0	.250
3340-1	.500
3340-2	.750

3560

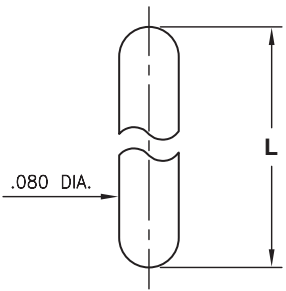
3560-X-00-XX-00-00-03-0



Basic Part Number	Length L
3560-0	.250
3560-1	.500
3560-2	.750

3580

3580-X-00-XX-00-00-03-0



Basic Part Number	Length L
3580-0	.250
3580-1	.500
3580-2	.750

SPECIFICATIONS:

Pin Material: Brass Alloy 360, 1/2 Hard
(Except where noted)

Dimensions: Inches

Tolerances On: Lengths: $\pm .005$
Diameters: $\pm .002$
Angles: $\pm 2^\circ$



ORDER CODE: XXXX - X - 00 - XX - 00 - 00 - 03 - 0

BASIC PART # →

← **SPECIFY PIN FINISH:**

- ◆ **80** 200 μ " TIN OVER NICKEL (RoHS)
- ◆ **15** 10 μ " GOLD OVER NICKEL (RoHS)

