



Chipsmall Limited consists of a professional team with an average of over 10 year of expertise in the distribution of electronic components. Based in Hongkong, we have already established firm and mutual-benefit business relationships with customers from,Europe,America and south Asia,supplying obsolete and hard-to-find components to meet their specific needs.

With the principle of “Quality Parts,Customers Priority,Honest Operation,and Considerate Service”,our business mainly focus on the distribution of electronic components. Line cards we deal with include Microchip,ALPS,ROHM,Xilinx,Pulse,ON,Everlight and Freescale. Main products comprise IC,Modules,Potentiometer,IC Socket,Relay,Connector.Our parts cover such applications as commercial,industrial, and automotives areas.

We are looking forward to setting up business relationship with you and hope to provide you with the best service and solution. Let us make a better world for our industry!



## Contact us

Tel: +86-755-8981 8866 Fax: +86-755-8427 6832

Email & Skype: info@chipsmall.com Web: www.chipsmall.com

Address: A1208, Overseas Decoration Building, #122 Zhenhua RD., Futian, Shenzhen, China



THIS DRAWING IS UNPUBLISHED.

RELEASED FOR PUBLICATION

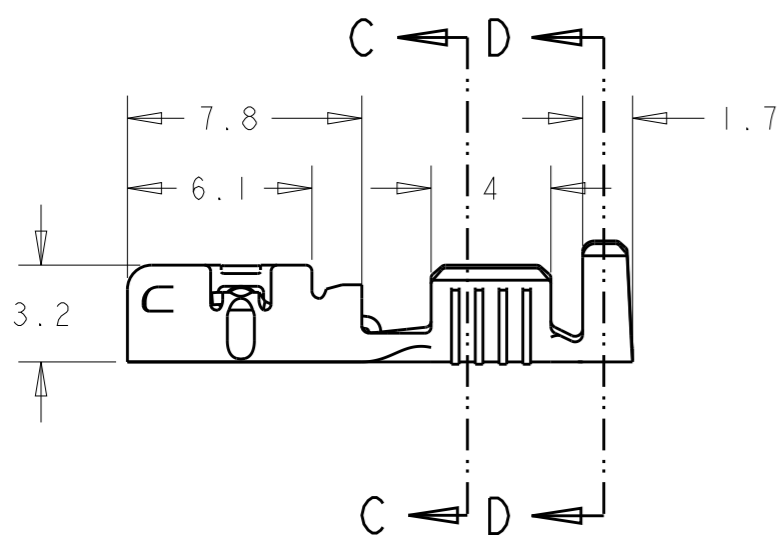
20

© COPYRIGHT 20 BY -

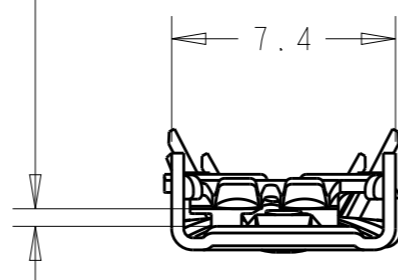
ALL RIGHTS RESERVED.

REVISIONS

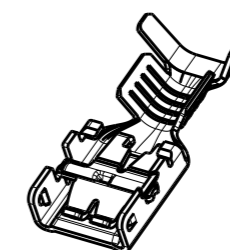
P	LTR	DESCRIPTION	DATE	DWN	APVD
	F1	REVISED PER ECR-15-008953	16JUN2015	NK	DC



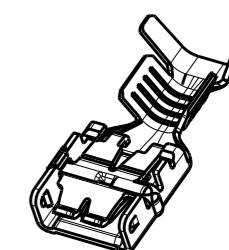
Para lengüeta de 0.8 mm  
For 0.8mm tab thickness



PACKAGING DETAILS:  
QUANTITY PER REEL: 8000 PCS (END FEED)

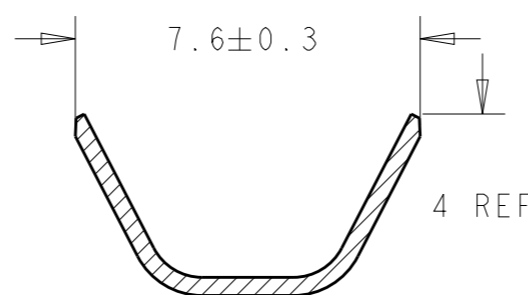
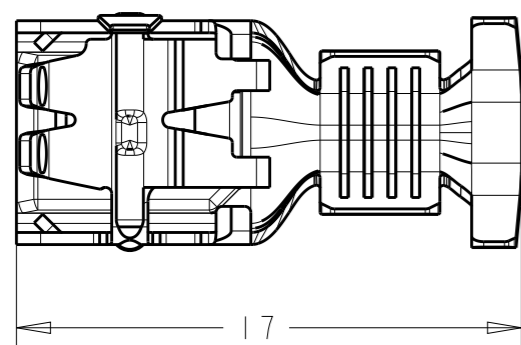


Left-sided product

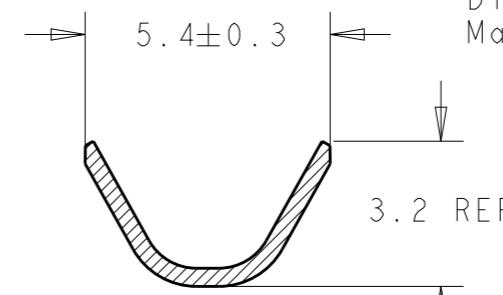


Right-sided product

Rango de hilo de >1,0 a 2,5 mm<sup>2</sup>  
Wire range from >1.0 to 2.5 mm<sup>2</sup>  
Diametro de aislante max 3,6 mm  
Max. Insulation Diameter 3.6 mm

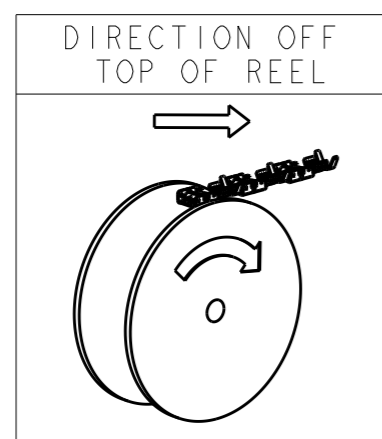


SECTION D-D  
SCALE 6:1



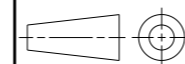
SECTION C-C  
SCALE 6:1

336076-5	Acero Steel	Preniquelado Pre-Ni
336076-3	Latón Brass	Preestañado Pre-Tin
336076-1	Latón Brass	-
Guion Dash	Material	Acabado Finish



THIS DRAWING IS A CONTROLLED DOCUMENT.

DIMENSIONS:  
mm



MATERIAL  
Table

TOLERANCES UNLESS  
OTHERWISE SPECIFIED:

0 PLC	±0.5
1 PLC	±0.5
2 PLC	±
3 PLC	±
4 PLC	±
ANGLES	±

FINISH  
Table

DWN J. Sal 22 Dec 04

CHK J. L 22 Dec 04

APVD -

PRODUCT SPEC  
108-22128 Brass  
108-22150 Pre-Ni Steel

APPLICATION SPEC  
114-22017

WEIGHT -

Customer Drawing



NAME  
E-SPRING CONTACT 6,35 Recept  
6.35 Receptacle E-SPRING CONTACT

SIZE CAGE CODE DRAWING NO RESTRICTED TO

A300779 C-336076

SCALE 4:1 SHEET 1 OF 1 REV F1