



Chipsmall Limited consists of a professional team with an average of over 10 year of expertise in the distribution of electronic components. Based in Hongkong, we have already established firm and mutual-benefit business relationships with customers from,Europe,America and south Asia,supplying obsolete and hard-to-find components to meet their specific needs.

With the principle of “Quality Parts,Customers Priority,Honest Operation,and Considerate Service”,our business mainly focus on the distribution of electronic components. Line cards we deal with include Microchip,ALPS,ROHM,Xilinx,Pulse,ON,Everlight and Freescale. Main products comprise IC,Modules,Potentiometer,IC Socket,Relay,Connector.Our parts cover such applications as commercial,industrial, and automotives areas.

We are looking forward to setting up business relationship with you and hope to provide you with the best service and solution. Let us make a better world for our industry!



## Contact us

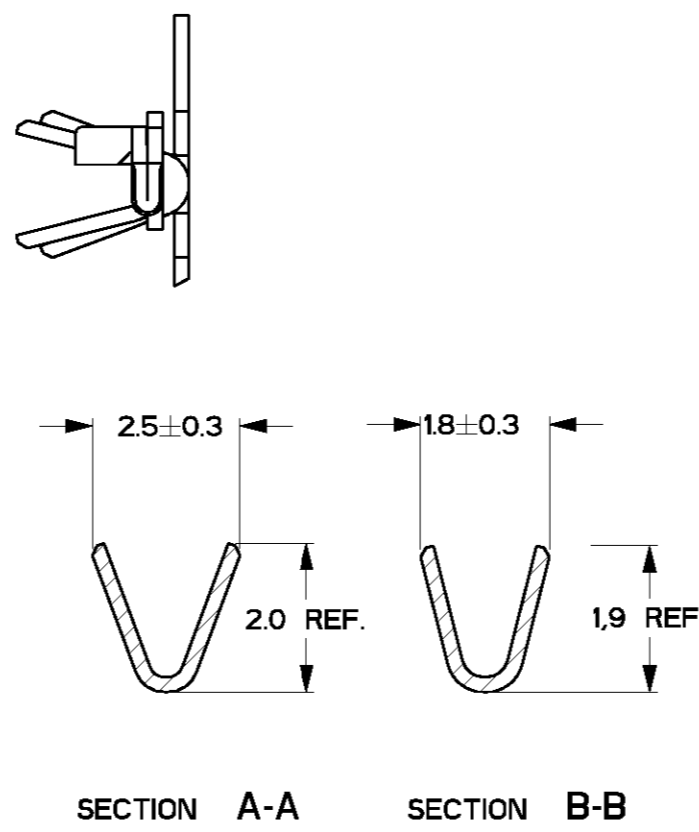
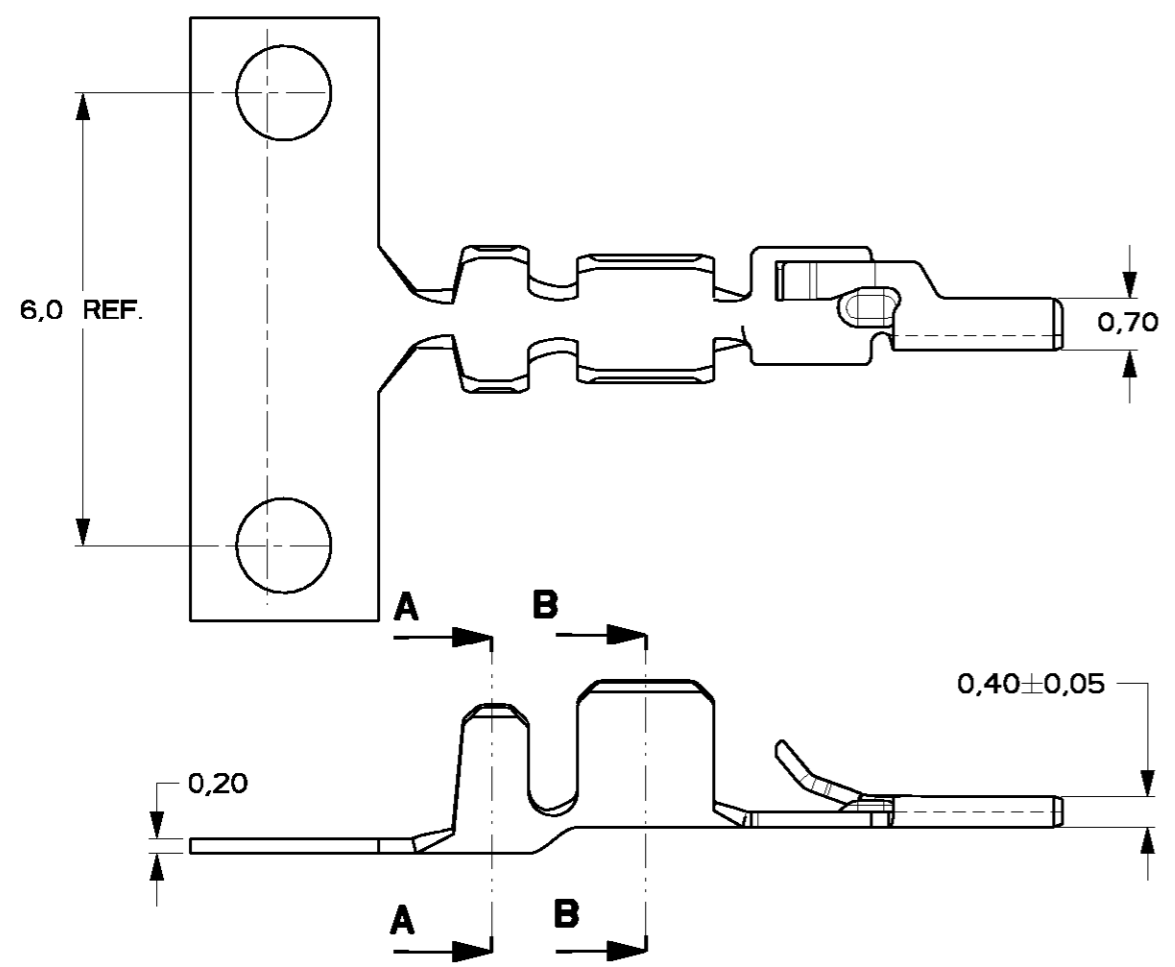
Tel: +86-755-8981 8866 Fax: +86-755-8427 6832

Email & Skype: [info@chipsmall.com](mailto:info@chipsmall.com) Web: [www.chipsmall.com](http://www.chipsmall.com)

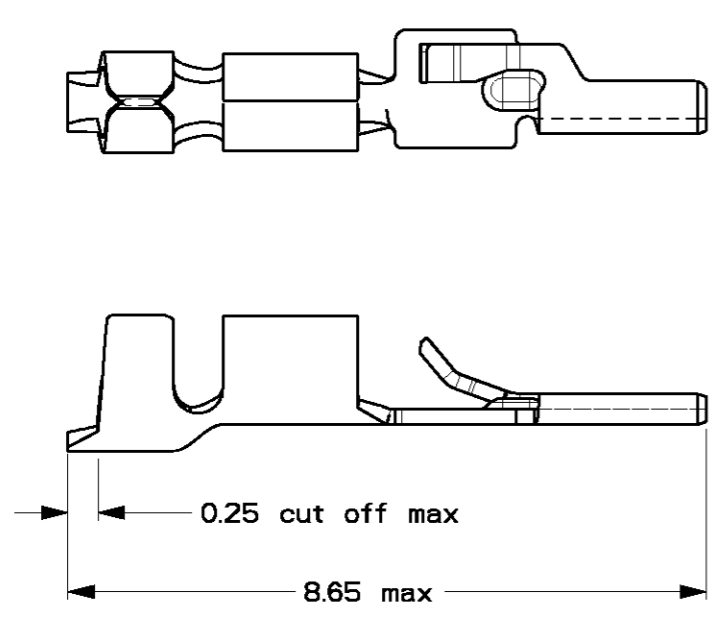
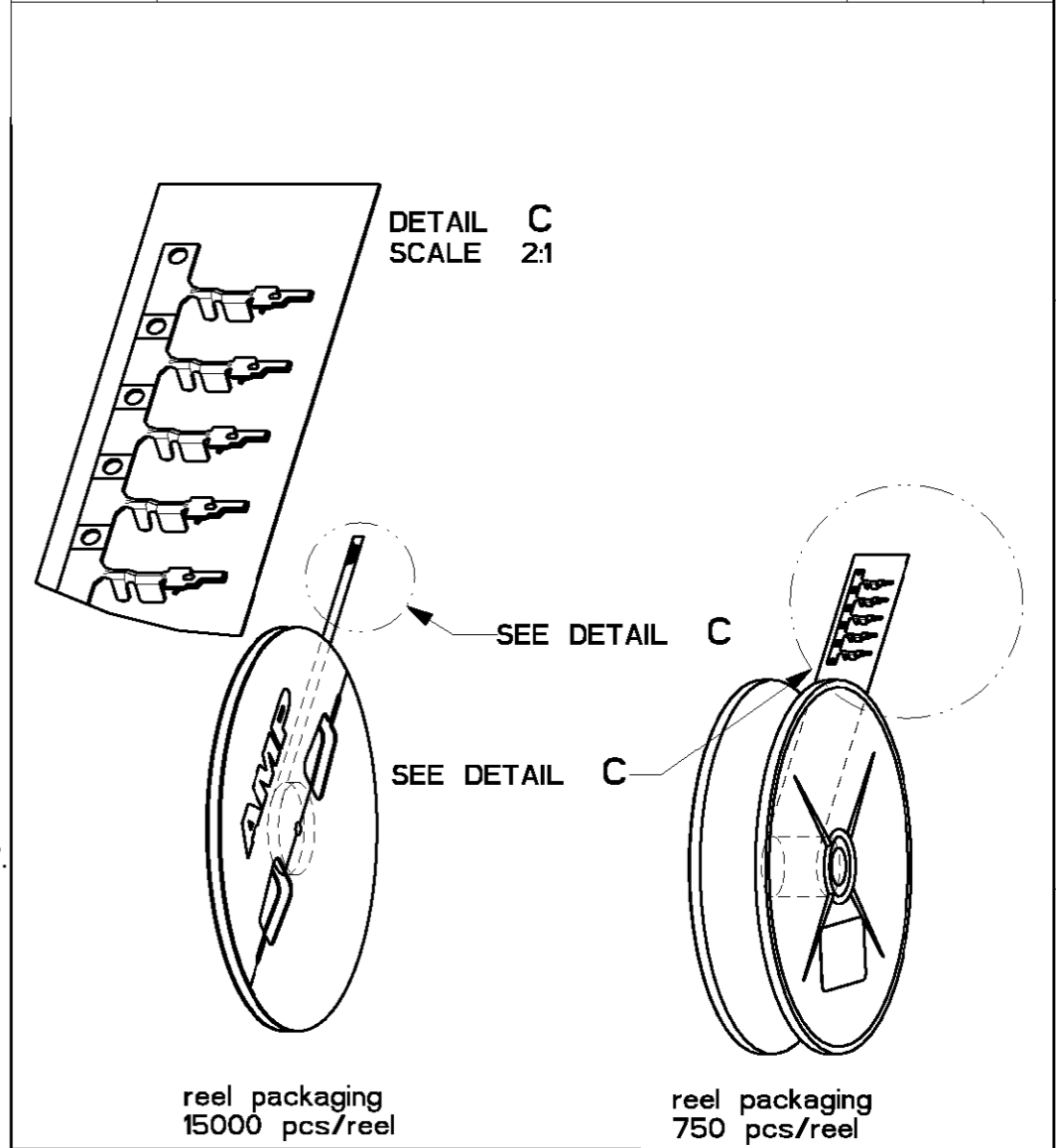
Address: A1208, Overseas Decoration Building, #122 Zhenhua RD., Futian, Shenzhen, China



LOC	DIST	REVISIONS			
		LTR	DESCRIPTION	DATE	APVD
H	-	E1	REVISED PER ECO-11-005294	30APR11	HMR



- NOTES:
- 1. WIRE RANGE 24-20 AWG
  - 2. INSULATION RANGE Ø .50- .060 (1,27-1,52 mm)
  - 3 FOR APPLICATOR USE ONLY
  - 4 FOR HANDTOOL USE ONLY
  - 5. FOR APPLICABLE CONNECTOR HOUSINGS SEE C-338095.



<div><div>4</div><div>3</div></div>	750	Pre-Tin	COSI-contact	Phosphorbronze	1-0338097-1
	15000	Pre-Tin	COSI-contact	Phosphorbronze	0-0338097-1
	Pcs/reel	Finish	Description	Material	Partnumber

<div>ANCES UNLESS ISE SPECIFIED:</div> <div>± 0.2</div> <div>± 0.1</div> <div>± 0.05</div> <div>± 0.01</div> <div>± -</div> <div>± -</div>	DWN	<div><div><div>TE</div><div>TE Connectivity</div></div></div>							
	CHK								
	H.v.Delft								
	APVD	-	NAME						
	PRODUCT SPEC		MICRO-MATCH COSI CONTACT						
	108-19052		20-24 AWG						
e-tinplated	APPLICATION SPEC		DRAWING NO						
	114-19051		SIZE	CAGE CODE	C- 338097				
	WEIGHT		A3	00779					
	-		CUSTOMER DRAWING						
		SCALE	10:1	SHEET	1	OF	1	REV	E1

DIMENSIONS: mm		TOLERANCES UNLESS OTHERWISE SPECIFIED:	
	0 PLC	±	0,2
	1 PLC	±	0,1
	2 PLC	±	0,05
	3 PLC	±	0,01
	4 PLC	±	-
	ANGLES	±	0,2°
MATERIAL		FINISH	
		Pre-tinplated	