



Chipsmall Limited consists of a professional team with an average of over 10 year of expertise in the distribution of electronic components. Based in Hongkong, we have already established firm and mutual-benefit business relationships with customers from,Europe,America and south Asia,supplying obsolete and hard-to-find components to meet their specific needs.

With the principle of “Quality Parts,Customers Priority,Honest Operation,and Considerate Service”,our business mainly focus on the distribution of electronic components. Line cards we deal with include Microchip,ALPS,ROHM,Xilinx,Pulse,ON,Everlight and Freescale. Main products comprise IC,Modules,Potentiometer,IC Socket,Relay,Connector.Our parts cover such applications as commercial,industrial, and automotives areas.

We are looking forward to setting up business relationship with you and hope to provide you with the best service and solution. Let us make a better world for our industry!



Contact us

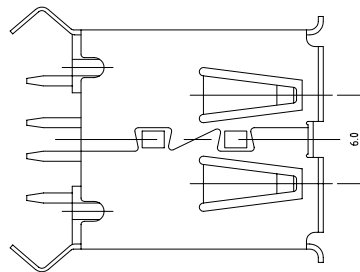
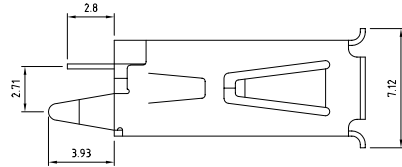
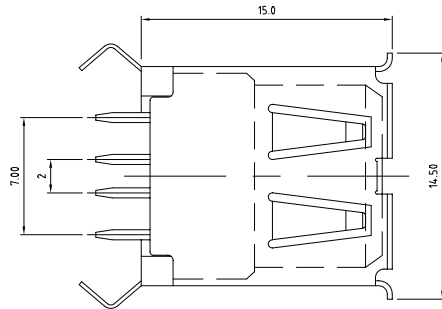
Tel: +86-755-8981 8866 Fax: +86-755-8427 6832

Email & Skype: info@chipsmall.com Web: www.chipsmall.com

Address: A1208, Overseas Decoration Building, #122 Zhenhua RD., Futian, Shenzhen, China



used for:



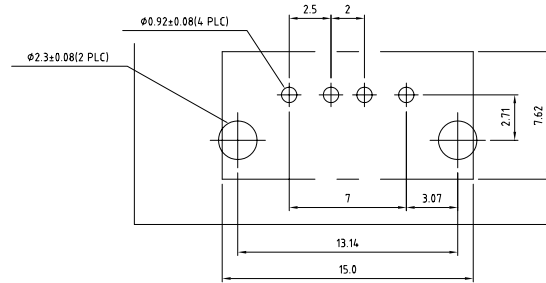
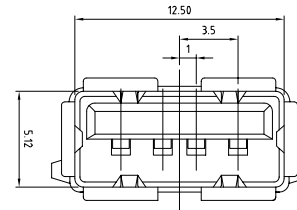
SPECIFICATIONS

Materials

Insulator: Thermoplastic, Glass Filled, UL94V-0 Rated
 Contact: Copper Alloy, 30u" Gold Plated
 Shell: Copper Alloy, Nickel Plated

Electrical

Insulation Resistance: 1000 Megohms Minimum
 Contact Resistance: 30 Milliohms Maximum Initial
 Dielectric Withstanding Voltage: 500V AC for one minute
 Current: 1.0 Ampere Maximum Per Contact At 30°C T-Rise
 Voltage: 30V AC (rms)
 Temperature: -55°C ~ 85°C



Directive 2002/95/EC
 „RoHS“
 Compliant

THIS DRAWING MAY NOT BE COPIED OR REPRODUCED IN ANY WAY, AND MAY NOT BE PASSED ON TO A THIRD PARTY WITHOUT WRITTEN PERMISSION. OWNERSHIP AND COPYRIGHT OF CONEC CORPORATION DO NOT ALTER CAD DRAWING BY HAND	tolerance		finish		Dim. in mm	scale:			
	unless otherwise specified tolerance shall be as follows Decimal: .xx .xxx Angles:					SEE SPECIFICATIONS			
			2006	date	name	title: USB 2.0 connector A type PCB Thru-Hole 4pin female RoHS compliant			
			draw.	April 17	Vincent Ke				
			appd.	April 17	Kathy Skelhorn				
			norm						
			d-old			drawing no.:		AutoCAD 2005	DIN A3
						39K1A238		sheet	1/1
						part no.:		33UBAD-04SW12R	

