



Chipsmall Limited consists of a professional team with an average of over 10 year of expertise in the distribution of electronic components. Based in Hongkong, we have already established firm and mutual-benefit business relationships with customers from,Europe,America and south Asia,supplying obsolete and hard-to-find components to meet their specific needs.

With the principle of “Quality Parts,Customers Priority,Honest Operation,and Considerate Service”,our business mainly focus on the distribution of electronic components. Line cards we deal with include Microchip,ALPS,ROHM,Xilinx,Pulse,ON,Everlight and Freescale. Main products comprise IC,Modules,Potentiometer,IC Socket,Relay,Connector.Our parts cover such applications as commercial,industrial, and automotives areas.

We are looking forward to setting up business relationship with you and hope to provide you with the best service and solution. Let us make a better world for our industry!



Contact us

Tel: +86-755-8981 8866 Fax: +86-755-8427 6832

Email & Skype: info@chipsmall.com Web: www.chipsmall.com

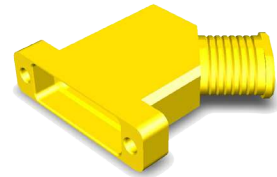
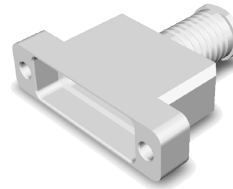
Address: A1208, Overseas Decoration Building, #122 Zhenhua RD., Futian, Shenzhen, China





Compliant with ESA specification 3401/087
Ultra-light weight
Solid fully machined aluminium alloy material

Space equipment
Satellites harnesses



High performance Micro-D Lightweight Backshell ESA qualified, for space applications.
Compliant with ESCC specifications 3401/087 Lightweight Backshells for 3401/029 and 3401/077 Micro-D Connectors.
Compatible with ESCC 3401/032 accessories.
Suitable for use in Space, and high performance military/aerospace applications: Board to Cable or Cable to Cable applications.
Sizes available: 9, 15, 21, 25, 31, 37 and 51 ways.

Outlets:

- Top circular
- Top elliptical
- 45° circular
- 45° elliptical

CHARACTERISTIC	SPECIFICATION
Operating Temperature range	-55 / + 125°C
Storage temperature range	-55 / + 125°C

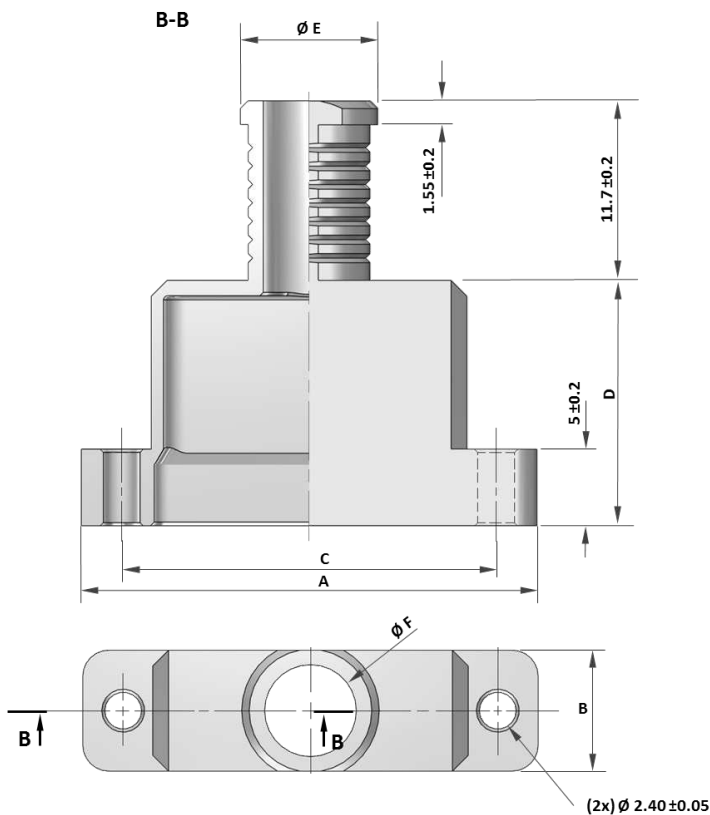
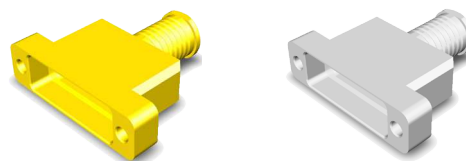
ESA / ESCC: code 3401 (Flying model).
Qualification reviewed every 2 years.

Male screwlock with clip (be ordered separately).

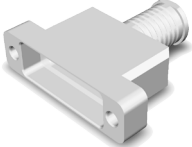
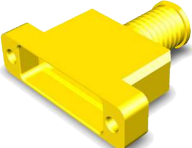
Individual packaging.
Traceability associated as per ESA/ESCC specifications.

COMPONENT	MATERIAL	FINISH
Backshell ESCC Variants 01 to 07, 15 to 21, 29 to 35, 43 to 49	Aluminium Alloy 6061-T6	25.4µm min. electroless Nickel
Backshell ESCC Variants 08 to 14, 22 to 28, 36 to 42, 50 to 56	Aluminium Alloy 6061-T6	0.7µm min. Gold over 25.4µm min. electroless Nickel
Male Screwlock	Passivated Stainless Steel	None
Clip	Passivated Stainless Steel	None

MDM LIGHTWEIGHT BACKSHELL TOP CIRCULAR ENTRY



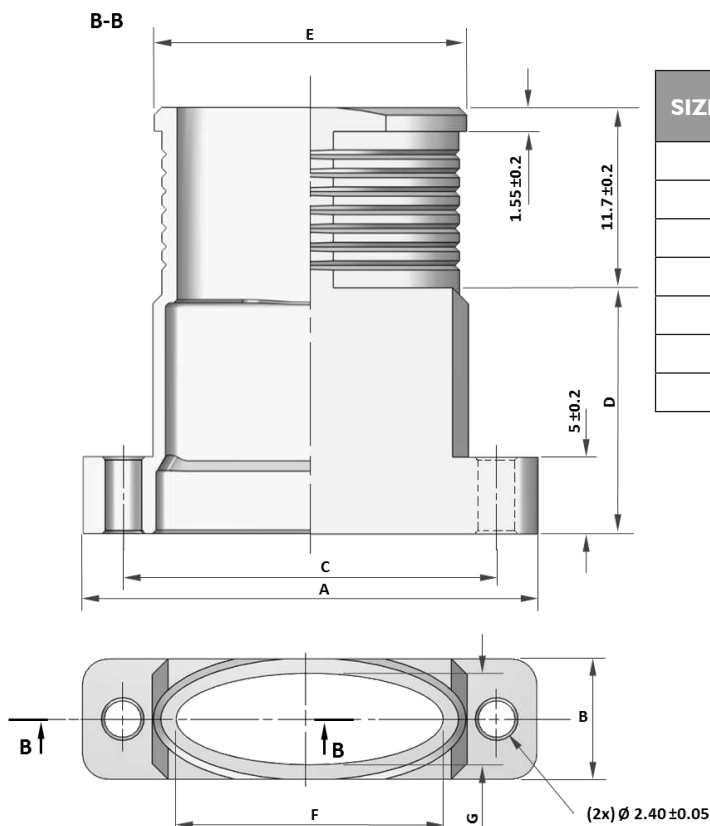
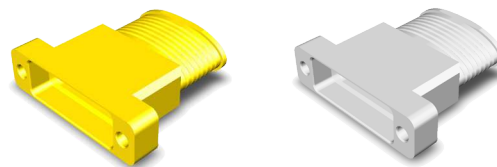
SIZE	A ±0.2	B ±0.2	C ±0.1	D ±0.2	ØE ±0.2	ØF ±0.2	WEIGHT (GRAMS)
	19.65	7.90	14.35	10.00	9.00	6.00	3
	23.45	7.90	18.16	12.00	9.00	6.00	3
	27.25	7.90	21.97	14.00	9.00	6.00	4
	29.80	7.90	24.51	16.00	9.00	6.00	4
	33.60	7.90	28.32	17.00	9.00	6.00	5
	37.40	7.90	32.13	18.00	9.00	6.00	5
	36.15	8.90	30.86	19.00	10.00	7.00	6

SHELL FINISH	CONTACT SIZE	ESA/ESCC DESCRIPTION	C&K PN
 Electroless Nickel	9	340108701B	C115366-1032D
	15	340108702B	C115366-1033D
	21	340108703B	C115366-1034D
	25	340108704B	C115366-1035D
	31	340108705B	C115366-1036D
	37	340108706B	C115366-1037D
	51	340108707B	C115366-1038D
 Gold	9	340108708B	C115366-1032C
	15	340108709B	C115366-1033C
	21	340108710B	C115366-1034C
	25	340108711B	C115366-1035C
	31	340108712B	C115366-1036C
	37	340108713B	C115366-1037C
	51	340108714B	C115366-1038C

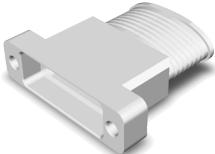
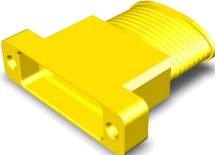


Dimensions shown in: mm
Specifications and dimensions subject to change

MDM LIGHTWEIGHT BACKSHELL TOP ELLIPTICAL ENTRY



SIZE	A ±0.2	B ±0.2	C ±0.1	D ±0.2	E ±0.2	F ±0.2	G ±0.2	WEIGHT (GRAMS)
	19.65	7.90	14.35	10.00	10.90	7.90	6.00	3
	23.45	7.90	18.16	12.00	13.70	10.70	6.00	4
	27.25	7.90	21.97	14.00	18.00	15.00	6.00	4
	29.80	7.90	24.51	16.00	20.50	17.50	6.00	4
	33.60	7.90	28.32	17.00	23.80	20.80	6.00	5
	37.40	7.90	32.13	18.00	27.60	24.60	6.00	6
	36.15	8.90	30.86	19.00	26.40	23.40	7.00	6

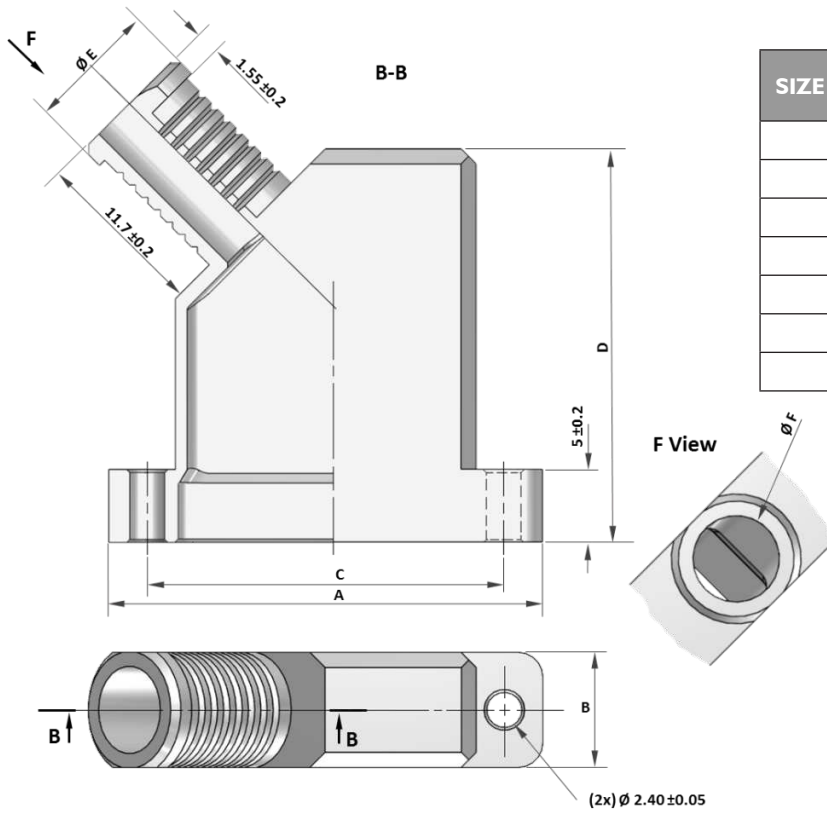
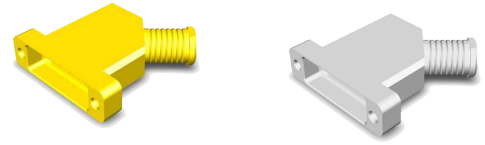
SHELL FINISH	CONTACT SIZE	ESA/ESCC DESCRIPTION	C&K PN
 Electroless Nickel	9	340108715B	CI15366-1039D
	15	340108716B	CI15366-1040D
	21	340108717B	CI15366-1041D
	25	340108718B	CI15366-1042D
	31	340108719B	CI15366-1043D
	37	340108720B	CI15366-1044D
	51	340108721B	CI15366-1045D
 Gold	9	340108722B	CI15366-1039C
	15	340108723B	CI15366-1040C
	21	340108724B	CI15366-1041C
	25	340108725B	CI15366-1042C
	31	340108726B	CI15366-1043C
	37	340108727B	CI15366-1044C
	51	340108728B	CI15366-1045C



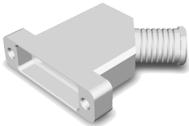
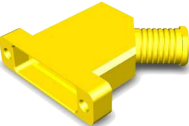
Dimensions shown in: mm
Specifications and dimensions subject to change

MDM LIGHTWEIGHT BACKSHELL 45° CIRCULAR ENTRY

(Our design accepts right or left mounting)



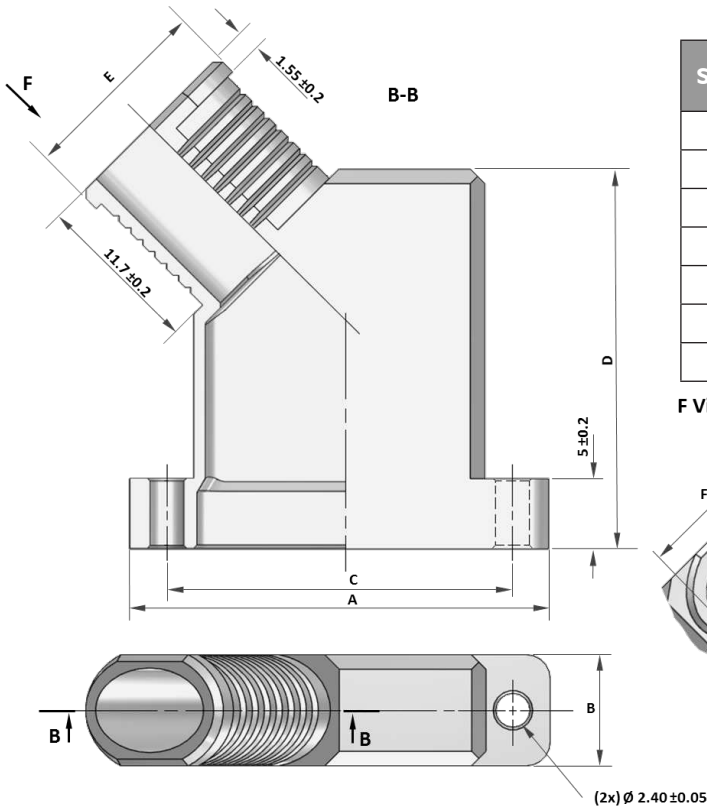
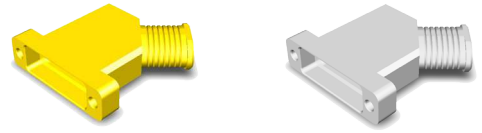
SIZE	A ±0.2	B ±0.2	C ±0.1	D ±0.2	ØE ±0.2	ØF ±0.2	WEIGHT (GRAMS)
	19.65	7.90	14.35	21.00	8.30	5.30	3
	23.45	7.90	18.16	23.00	9.00	6.00	4
	27.25	7.90	21.97	24.00	9.00	6.00	4
	29.80	7.90	24.51	27.00	9.00	6.00	5
	33.60	7.90	28.32	28.00	9.00	6.00	5
	37.40	7.90	32.13	29.00	9.00	6.00	6
	36.15	8.90	30.86	30.00	10.00	7.00	6

SHELL FINISH	CONTACT SIZE	ESA/ESCC DESCRIPTION	C&K PN
 Electroless Nickel	9	340108729B	CI15366-1046D
	15	340108730B	CI15366-1047D
	21	340108731B	CI15366-1048D
	25	340108732B	CI15366-1049D
	31	340108733B	CI15366-1050D
	37	340108734B	CI15366-1051D
	51	340108735B	CI15366-1052D
 Gold	9	340108736B	CI15366-1046C
	15	340108737B	CI15366-1047C
	21	340108738B	CI15366-1048C
	25	340108739B	CI15366-1049C
	31	340108740B	CI15366-1050C
	37	340108741B	CI15366-1051C
	51	340108742B	CI15366-1052C

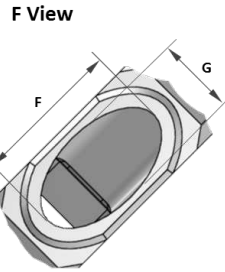


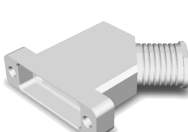
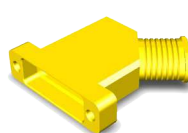
Dimensions shown in: mm
Specifications and dimensions subject to change

MDM LIGHTWEIGHT BACKSHELL
45° ELLIPTICAL ENTRY
(Our design accepts right or left mounting)



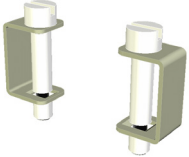
SIZE	A ±0.2	B ±0.2	C ±0.1	D ±0.2	E ±0.2	F ±0.2	G ±0.2	WEIGHT (GRAMS)
	19.65	7.90	14.35	21.00	8.00	5.00	6.00	3
	23.45	7.90	18.16	23.00	10.50	7.50	6.00	4
	27.25	7.90	21.97	24.00	12.50	9.50	6.00	5
	29.80	7.90	24.51	27.00	13.80	10.80	6.00	5
	33.60	7.90	28.32	28.00	15.50	12.50	6.00	6
	37.40	7.90	32.13	29.00	18.00	15.00	6.00	6
	36.15	8.90	30.86	30.00	20.00	17.00	7.00	7



SHELL FINISH	CONTACT SIZE	ESA/ESCC DESCRIPTION	C&K PN
 Electroless Nickel	9	340108743B	CI15366-1053D
	15	340108744B	CI15366-1054D
	21	340108745B	CI15366-1055D
	25	340108746B	CI15366-1056D
	31	340108747B	CI15366-1057D
	37	340108748B	CI15366-1058D
	51	340108749B	CI15366-1059D
 Gold	9	340108750B	CI15366-1053C
	15	340108751B	CI15366-1054C
	21	340108752B	CI15366-1055C
	25	340108753B	CI15366-1056C
	31	340108754B	CI15366-1057C
	37	340108755B	CI15366-1058C
	51	340108756B	CI15366-1059C



Dimensions shown in: mm
 Specifications and dimensions subject to change

MALE SCREWLOCK	ESA/ESCC DESCRIPTION	C&K P/N
	340103218B	C115366-1060C

AMERICAS

Tel: +1.617.969.3700

ASIA

Tel: +852.3713.5288

EUROPE

Tel: +33.1.60.24.51.51

