



Chipsmall Limited consists of a professional team with an average of over 10 year of expertise in the distribution of electronic components. Based in Hongkong, we have already established firm and mutual-benefit business relationships with customers from,Europe,America and south Asia,supplying obsolete and hard-to-find components to meet their specific needs.

With the principle of "Quality Parts,Customers Priority,Honest Operation,and Considerate Service",our business mainly focus on the distribution of electronic components. Line cards we deal with include Microchip,ALPS,ROHM,Xilinx,Pulse,ON,Everlight and Freescale. Main products comprise IC,Modules,Potentiometer,IC Socket,Relay,Connector.Our parts cover such applications as commercial,industrial, and automotives areas.

We are looking forward to setting up business relationship with you and hope to provide you with the best service and solution. Let us make a better world for our industry!



Contact us

Tel: +86-755-8981 8866 Fax: +86-755-8427 6832

Email & Skype: info@chipsmall.com Web: www.chipsmall.com

Address: A1208, Overseas Decoration Building, #122 Zhenhua RD., Futian, Shenzhen, China



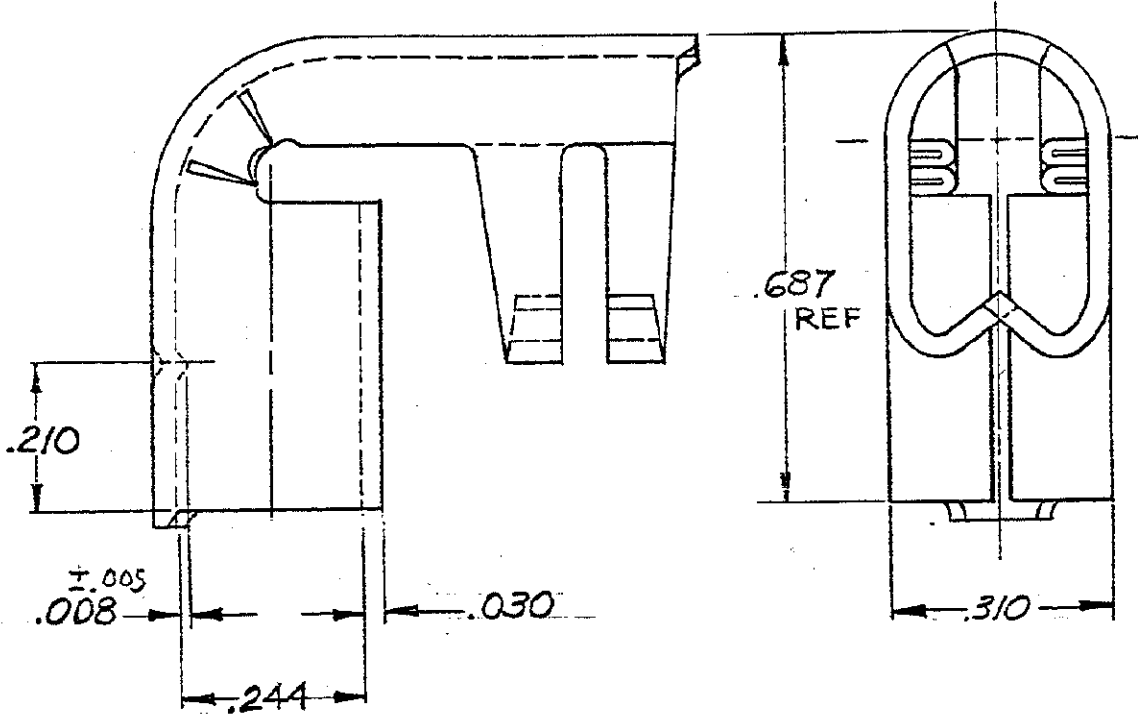
DRAWING MADE IN AMERICAN PROJECTION

©1947 BY AMP INCORPORATED. ALL RIGHTS RESERVED. AMP PRODUCTS COVERED BY PATENTS AND/OR PATENTS PENDING.

REVISIONS

LTR	DESCRIPTION	DATE	APPROVED
A	REDRAWN W/O CHANGE	2-15-73	SB
B	REV / G-5863	LO 4/92	
C	REV / 0720-0091-93	LO 6/93	ML

34483



100	LOOSE PC, BOX	8-34483-1
-	LOOSE PC	34483
QTY	PACKAGE TYPE	PART NO

UNLESS OTHERWISE SPECIFIED DIMENSIONS ARE IN INCHES TOLERANCES ON: DECIMALS ±.008 ANGLES ± 5°	CONTRACT NO. <u>4</u>	AMP	AMP INCORPORATED HARRISBURG, PENNSYLVANIA		
	DR <u>Ensminger</u> 2-15-73		NAME	WIRE TERMINAL SPARK PLUG-RIGHT ANGLE	
	CHK <u>Harry Paul</u> 2-15-73	APPD <u>Abel</u> 2-16-73	SIZE	CODE IDENT NO.	NUMBER
	REL <u>Harry Paul</u> 2-16-73	OTHER APPD	A	00779	34483
		SCALE 4:1	SHEET 1 OF 1		