



Chipsmall Limited consists of a professional team with an average of over 10 year of expertise in the distribution of electronic components. Based in Hongkong, we have already established firm and mutual-benefit business relationships with customers from,Europe,America and south Asia,supplying obsolete and hard-to-find components to meet their specific needs.

With the principle of “Quality Parts,Customers Priority,Honest Operation,and Considerate Service”,our business mainly focus on the distribution of electronic components. Line cards we deal with include Microchip,ALPS,ROHM,Xilinx,Pulse,ON,Everlight and Freescale. Main products comprise IC,Modules,Potentiometer,IC Socket,Relay,Connector.Our parts cover such applications as commercial,industrial, and automotives areas.

We are looking forward to setting up business relationship with you and hope to provide you with the best service and solution. Let us make a better world for our industry!



Contact us

Tel: +86-755-8981 8866 Fax: +86-755-8427 6832

Email & Skype: info@chipsmall.com Web: www.chipsmall.com

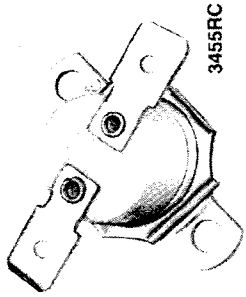
Address: A1208, Overseas Decoration Building, #122 Zhenhua RD., Futian, Shenzhen, China



1700



UNIVERSAL THERMOSTATS 3455RC 15 AMP HIGH TEMPERATURE SERIES



3455RC

APPLICATIONS:

- Copy Machines
- Power Supplies
- Telecommunications
- Ovens

BENEFITS:

- Electrical Rating to 15 Amp 120 VAC Resistive
- Environmental Exposure 0° to 550°F (-18° to 288 °C)
- U.L., C.S.A., European Approval Agency Listings
- Single Contact (SPST)
- Pre-set and Tamperproof
- High Density Ceramic Base

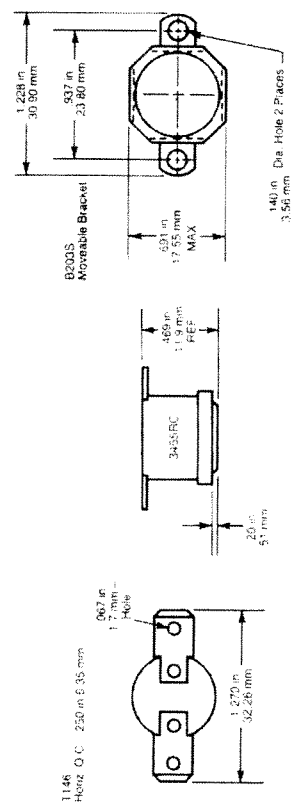
SHIPPED FROM STOCK

OPEN ON RISE

TEMP °F			TEMP °C			PART NUMBER
OPEN	TOL +/-	CLOSE	OPEN	TOL +/-	CLOSE	
65	5	30	18	3	-1	3455RC-100-220
75	5	40	24	3	4	3455RC-100-221
85	5	55	29	3	13	3455RC-100-222
95	5	65	35	3	18	3455RC-100-223
105	5	75	41	3	24	3455RC-100-224
115	5	85	46	3	29	3455RC-100-225
125	5	95	52	3	35	3455RC-100-226
135	5	105	57	3	41	3455RC-100-227
145	5	115	63	3	46	3455RC-100-228
155	5	125	68	3	52	3455RC-100-229
165	5	135	73	3	57	3455RC-100-230
175	5	145	79	3	63	3455RC-100-231
185	5	155	85	3	68	3455RC-100-232
195	5	165	91	3	73	3455RC-100-233
205	6	175	96	4	79	3455RC-100-234
215	6	185	102	4	85	3455RC-100-235
225	6	195	107	4	91	3455RC-100-236
235	6	205	113	4	96	3455RC-100-237
245	6	215	118	4	102	3455RC-100-238
255	7	225	124	4	107	3455RC-100-239
275	7	245	135	4	118	3455RC-100-240
295	7	265	146	4	129	3455RC-100-241
315	10	275	157	6	135	3455RC-100-242

CLOSE ON RISE

TEMP °F			TEMP °C			PART NUMBER
CLOSE	TOL +/-	OPEN	CLOSE	TOL +/-	OPEN	
70	8	35	21	5	2	3455RC-100-243
90	8	60	32	5	16	3455RC-100-244
110	8	80	43	5	27	3455RC-100-245
130	8	100	54	5	38	3455RC-100-246
150	8	120	66	5	49	3455RC-100-247
170	8	140	77	5	60	3455RC-100-248
190	8	160	88	5	71	3455RC-100-249
210	8	180	99	5	82	3455RC-100-250
230	8	200	110	5	93	3455RC-100-251



RATINGS - RESISTIVE

CATALOG ELECTRICAL TYPE	120 VAC	240 VAC	277 VAC
3455RC	100,000 100,000 6,000 6,000	10 AMP 2.2 FLA 13.2 LRA 2.9 FLA 17.4 LRA 125 VA	10 AMP — — —

FLA: Full Load Amps
LRA: Locked Rotor Amps