



Chipsmall Limited consists of a professional team with an average of over 10 year of expertise in the distribution of electronic components. Based in Hongkong, we have already established firm and mutual-benefit business relationships with customers from,Europe,America and south Asia,supplying obsolete and hard-to-find components to meet their specific needs.

With the principle of “Quality Parts,Customers Priority,Honest Operation,and Considerate Service”,our business mainly focus on the distribution of electronic components. Line cards we deal with include Microchip,ALPS,ROHM,Xilinx,Pulse,ON,Everlight and Freescale. Main products comprise IC,Modules,Potentiometer,IC Socket,Relay,Connector.Our parts cover such applications as commercial,industrial, and automotives areas.

We are looking forward to setting up business relationship with you and hope to provide you with the best service and solution. Let us make a better world for our industry!



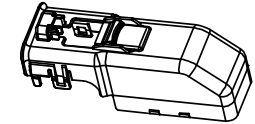
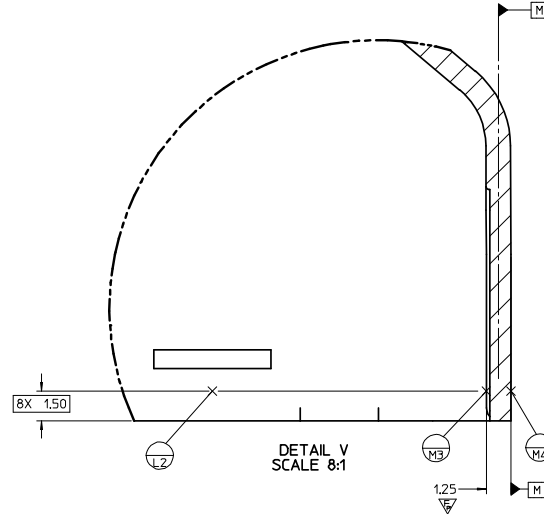
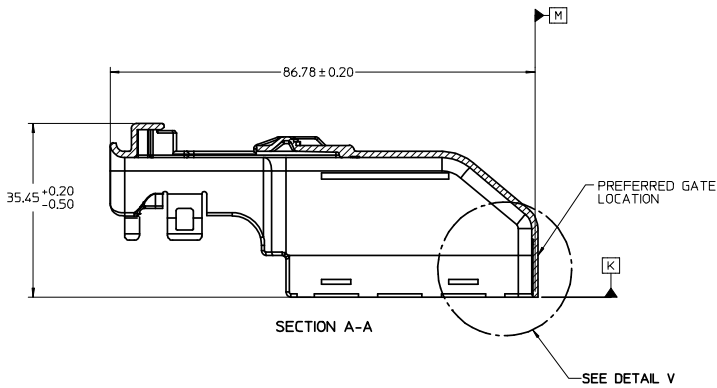
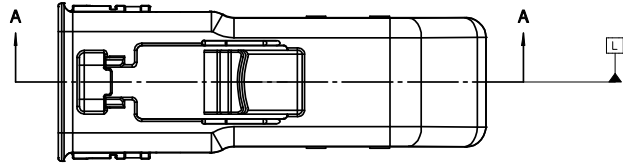
Contact us

Tel: +86-755-8981 8866 Fax: +86-755-8427 6832

Email & Skype: info@chipsmall.com Web: www.chipsmall.com

Address: A1208, Overseas Decoration Building, #122 Zhenhua RD., Futian, Shenzhen, China





NOTES: UNLESS OTHERWISE SPECIFIED

1. MATERIAL:

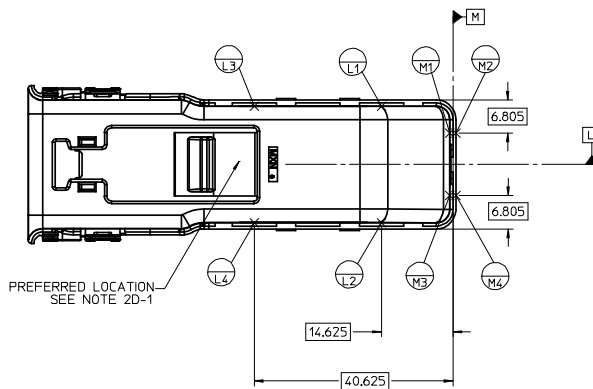
- A. RESIN: PBT, G.F. 30%
20% MAX. REGRIND (BY WEIGHT)
- B. COLOR: SEE TABLE

2. DESIGN - GENERAL:

- A. THIS IS A 100% CAD GENERATED PART. THE CAD MATHEMATICAL DATA IS THE MASTER FOR THIS PART. FOR DIMENSIONAL OR ANY INFORMATION NOT SHOWN ON THIS DRAWING, ANALYZE THE CAD MODEL.
- B. TOLERANCES:
 - a. LINEAR X.X ± 0.30
X.XX ± 0.10
X.XXX ± 0.10
 - b. ANGULAR X° ± 3.0°
- C. CORNERS SHOWN AS SHARP TO BE R 0.2 MAX.
- D-1. FOLLOWING PRODUCTION CODES TO BE PRESENT
 - a. DATE CODE
 - b. CAVITY ID
- E-1. PARTS MUST BE FREE OF DISCOLORATION, SALT RESIDUE AND OTHER IMPERFECTIONS THAT AFFECT FIT OR FUNCTION.
- E-2. SCRATCHES OR DENTS NOT TO EXCEED 0.13mm IN DEPTH.
- F. CHANGES IN DESIGN FROM PART PREVIOUSLY APPROVED REQUIRES PRIOR ENGINEERING APPROVAL. THIS INCLUDES BUT IS NOT LIMITED TO DRAFT, MATERIAL OR PROCESSING.

3. DESIGN - MANUFACTURING:

- A. DRAFT TO BE WITHIN TOLERANCE.
- B. ALLOWABLE FLASH 0.2 MAX HIGH X 0.13 MAX THICK.
- C. ALLOWABLE PARTING LINE MISMATCH 0.2 MAX.
- D. EJECTOR PINS MARK TO BE FLUSH TO 0.25 MAX DEPRESSED.
- E. ALLOWABLE GATE VESTIGE TO BE FLUSH TO 0.25 MAX PROTRUSION.



PREFERRED LOCATION SEE NOTE 2D-1

AUTOMATION ENGINEERING FUNCTIONAL ASSEMBLY: 0
CUSTOMER FUNCTIONAL CUSTOMER: 0
PRODUCT ENGINEERING FUNCTIONAL PRODUCT: 1

| 34565-0003 | D | BLACK | SALEABLE | | | | | | |
|--------------|--------------|-------|----------|--------|-------------|--------------|-------------|-----------------------------------|---------------------|
| MATERIAL NO. | MATERIAL REV | COLOR | STATUS | D3 REV | DESCRIPTION | DESIGN UNITS | THIRD ANGLE | | |
| | | | | | | METRIC | PROJECTION | | |
| | | | | | | | | MX123 73/80 CKT DRESS COVER | |
| | | | | | | | | MOLEX INCORPORATED | |
| | | | | | | | | SD-34565-001 | SHEET NO. 1 OF 1 |

| ENTER DESCRIPTION | QUALITY SYMBOLS | GENERAL TOLERANCES (UNLESS SPECIFIED) | DIMENSION STYLE | SCALE | DESIGN UNITS | THIRD ANGLE |
|---------------------------------------------------------------------------------------------------------------|-----------------|-------------------------------------------------------------------------------------------------------------------|-----------------|-------|--------------|-------------|
| LEC NO: UAU2008-0708 DRAWN: SRAJENDRANAT 2008/05/05 CHKD: SK IVER 2008/05/05 APPR: VKOSHY 2008/05/05 | ▽=0 ▽=0 | mm INCH 4 PLACES +--- +--- 3 PLACES +--- +--- 2 PLACES +--- +--- 1 PLACE +--- +--- ANGULAR ± +---° | MM ONLY | 2:1 | METRIC | PROJECTION |

| DRAWN BY | DATE | TITLE |
|--------------|------------|-------|
| SRAJENDRANAT | 2008/05/02 | |
| CHECKED BY | DATE | |
| TSK IVER | 2008/05/02 | |
| APPROVED BY | DATE | |
| VKOSHY | 2008/05/02 | |

| MATERIAL NO. | DOCUMENT NO. |
|--------------|--------------|
| AS NOTED | SD-34565-001 |

| THIS DRAWING CONTAINS INFORMATION THAT IS PROPRIETARY TO MOLEX INCORPORATED AND SHOULD NOT BE USED WITHOUT WRITTEN PERMISSION |
|-------------------------------------------------------------------------------------------------------------------------------|
|-------------------------------------------------------------------------------------------------------------------------------|