



Chipsmall Limited consists of a professional team with an average of over 10 year of expertise in the distribution of electronic components. Based in Hongkong, we have already established firm and mutual-benefit business relationships with customers from,Europe,America and south Asia,supplying obsolete and hard-to-find components to meet their specific needs.

With the principle of “Quality Parts,Customers Priority,Honest Operation,and Considerate Service”,our business mainly focus on the distribution of electronic components. Line cards we deal with include Microchip,ALPS,ROHM,Xilinx,Pulse,ON,Everlight and Freescale. Main products comprise IC,Modules,Potentiometer,IC Socket,Relay,Connector.Our parts cover such applications as commercial,industrial, and automotives areas.

We are looking forward to setting up business relationship with you and hope to provide you with the best service and solution. Let us make a better world for our industry!



Contact us

Tel: +86-755-8981 8866 Fax: +86-755-8427 6832

Email & Skype: info@chipsmall.com Web: www.chipsmall.com

Address: A1208, Overseas Decoration Building, #122 Zhenhua RD., Futian, Shenzhen, China

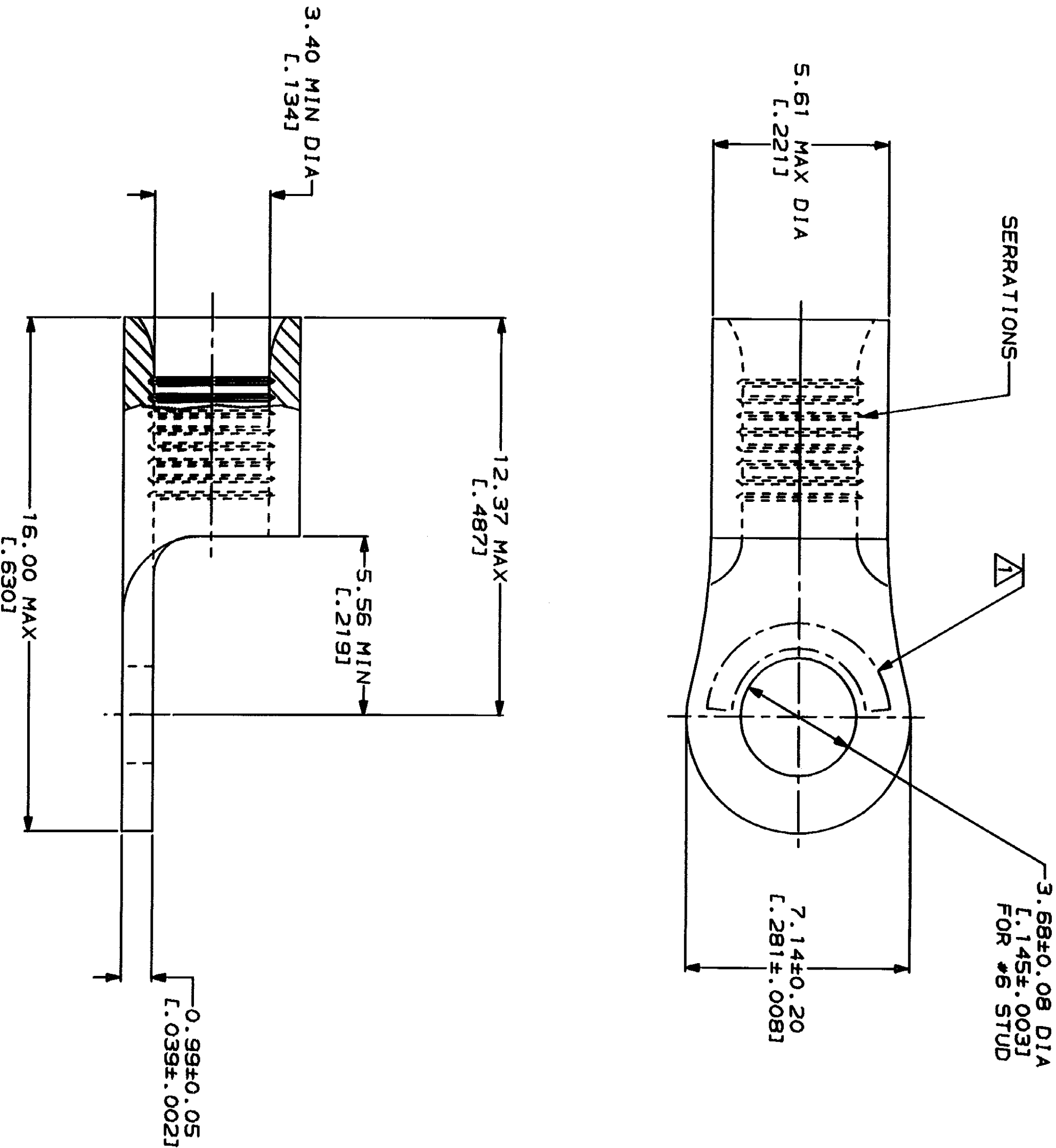


LOC		DIST		ZONE		LTR		REVISIONS		DATE	APPD
G	14										
REVISED PER 0720-0230-93											

METRIC
DIMENSIONS LISTED IN mm [INCHES]

AMP WIRE RANGE		UL E13288 Listed	
12-10 AWG STRANDED		12-10 AWG STRANDED	
LR7189 Certified		MILITARY P/N AND CLASS	
NOT CERTIFIED		NOT APPLICABLE	

△ STAMP AMP 12-10* APPROX AS SHOWN



AMP INCORPORATED
CUSTOMER SERVICE SYSTEMS

FOR ADDITIONAL
PRODUCT INFORMATION OR
COPIES OF DRAWINGS
AND TECHNICAL DOCUMENTS

PRODUCT INFORMATION CENTER
1-800-522-6752

FOR APPLICATION
TOOLING INFORMATION

TOOLING ASSISTANCE CENTER
1-800-722-1111

FOR ORDER ENTRY
1-800-526-5142

MAX RECOMMENDED OPERATING
TEMPERATURE:

170°C MAX

VOLTAGE RATING:

NOT APPLICABLE

WIRE CROSS SECTIONAL AREA RANGE:

2.62-6.64mm² (5,180-13,100) CIR MILS
STRANDED

THIS DRAWING IS A CONTROLLED DOCUMENT FOR
AND THE COMPANY HAS A RESPONSIBILITY TO
SHOULD BE CONSULTED FOR THE LATEST REVISION.

DO NOT SCALE PRINT.
UNLESS SPECIFIED
DIMENSIONS IN INCHES
TOLERANCES ON:

1. FRACTIONS ± .005
2. DECIMALS ± .005
3. ANGLES ± .005

MATERIAL

COPPER PER
ASTM B-152
ANNEALED

FINISH

TIN PLATE
0.00254 [L.000100] MIN
THK PER MIL-T-10727

OR 2-5-83
TA BRINKMAN

CHK 2-5-83
DA PATTERSON

APPD 2-5-83
DE MILLER

APPD 2-5-83
JL WICKLEY

PRODUCT SPEC

APPLICATION SPEC

WEIGHT

AMP

AMP Incorporated
Harrisburg, PA 17105-3608

NAME

TERMINAL, RING TONGUE,
BUDGET

SIZE

CAGE CODE
00779

DRAWING NO
G-34892

SCALE 8:1

SHEET 1 OF 1

PART NO

34892

34892

CUSTOMER DRAWING