



Chipsmall Limited consists of a professional team with an average of over 10 year of expertise in the distribution of electronic components. Based in Hongkong, we have already established firm and mutual-benefit business relationships with customers from,Europe,America and south Asia,supplying obsolete and hard-to-find components to meet their specific needs.

With the principle of “Quality Parts,Customers Priority,Honest Operation,and Considerate Service”,our business mainly focus on the distribution of electronic components. Line cards we deal with include Microchip,ALPS,ROHM,Xilinx,Pulse,ON,Everlight and Freescale. Main products comprise IC,Modules,Potentiometer,IC Socket,Relay,Connector.Our parts cover such applications as commercial,industrial, and automotives areas.

We are looking forward to setting up business relationship with you and hope to provide you with the best service and solution. Let us make a better world for our industry!



## Contact us

Tel: +86-755-8981 8866 Fax: +86-755-8427 6832

Email & Skype: [info@chipsmall.com](mailto:info@chipsmall.com) Web: [www.chipsmall.com](http://www.chipsmall.com)

Address: A1208, Overseas Decoration Building, #122 Zhenhua RD., Futian, Shenzhen, China



4

3

2

1

THIS DRAWING IS UNPUBLISHED.

RELEASED FOR PUBLICATION

© COPYRIGHT - BY TYCO ELECTRONICS CORPORATION. ALL RIGHTS RESERVED.

LOC

DIST

REVISIONS

P

LTR

DESCRIPTION

DATE

DWN

APVD

G

14

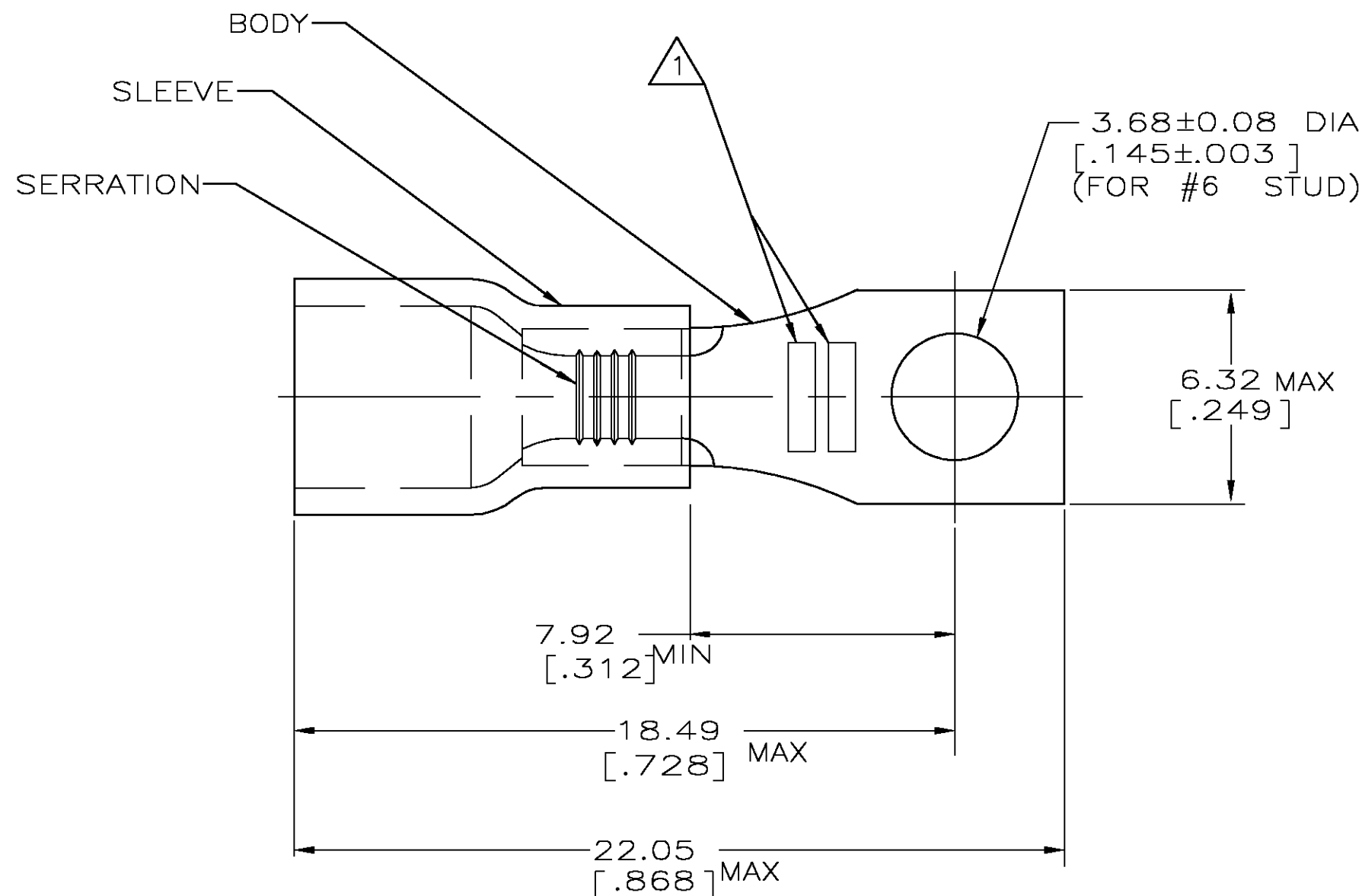
H

REV PER 0G3A-0654-04

19AUG04

JR

TM



AMP WIRE RANGE	UL Listed FILE E13288	LR7189 Certified
16-14 AWG SOLID OR STRANDED	16-14 AWG SOLID OR STRANDED	16-14 AWG SOLID OR STRANDED

- 1 STAMP AMP 16-14\* APPROX AS SHOWN
2. WIRE INSUL DIA, 2.67-3.68 [.105-.145]
3. TONGUE MATL THK, 0.79±0.05 [.031±.002]
- 4 BODY: COPPER PER ASTM B-152  
INSULATION: PVC, COLOR - BLUE
- 5 FINISH: BODY - TIN PLATE PER  
ASTM B-545

-	-	-
-	-	-
1000	LOOSE PIECE	34898
QTY	PACKAGE TYPE	PART NO

## AMP INCORPORATED CUSTOMER SERVICE SYSTEMS

FOR ADDITIONAL  
PRODUCT INFORMATION OR  
COPIES OF DRAWINGS  
AND TECHNICAL DOCUMENTSPRODUCT INFORMATION CENTER  
1-800-522-6752FOR APPLICATION  
TOOLING INFORMATIONTOOLING ASSISTANCE CENTER  
1-800-722-1111

FOR ORDER ENTRY

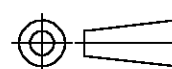
1-800-526-5142

THIS DRAWING IS A CONTROLLED DOCUMENT FOR  
AMP INCORPORATED. IT IS SUBJECT TO CHANGE  
AND THE CONTROLLING ENGINEERING ORGANIZATION  
SHOULD BE CONTACTED FOR THE LATEST REVISION.MAX RECOMMENDED OPERATING  
TEMPERATURE:

105° [221°F]

VOLTAGE RATING:  
N/ACIRCULAR MIL AREA:  
1.04-2.62mm² [2,050-5,180]  
SOLID OR STRANDED

THIS DRAWING IS A CONTROLLED DOCUMENT.

DIMENSIONS:  
MM

MATERIAL

- 4

TOLERANCES UNLESS  
OTHERWISE SPECIFIED:0 PLC ± -  
1 PLC ± -  
2 PLC ± 0.20 [.008]  
3 PLC ± -  
4 PLC ± -  
ANGLES ± -  
FINISH

- 5

DWN

L OLMEDA

05SEP95

CHK

M ELLIS

05SEP95

APVD

G NGO

05SEP95

PRODUCT SPEC

UL 486A

APPLICATION SPEC

-

WEIGHT

-

CUSTOMER DRAWING

**tyco**  
**Electronics**Tyco Electronics Corporation  
Harrisburg, PA 17105

NAME

TERMINAL, RECTANGULAR  
TONGUE, PLASTI-GRIP,  
16-14

SIZE

CAGE CODE

DRAWING NO

RESTRICTED TO

A3

00779

C-34898

SCALE 6:1

SHEET 1 OF 1

REV H