



Chipsmall Limited consists of a professional team with an average of over 10 year of expertise in the distribution of electronic components. Based in Hongkong, we have already established firm and mutual-benefit business relationships with customers from,Europe,America and south Asia,supplying obsolete and hard-to-find components to meet their specific needs.

With the principle of “Quality Parts,Customers Priority,Honest Operation,and Considerate Service”,our business mainly focus on the distribution of electronic components. Line cards we deal with include Microchip,ALPS,ROHM,Xilinx,Pulse,ON,Everlight and Freescale. Main products comprise IC,Modules,Potentiometer,IC Socket,Relay,Connector.Our parts cover such applications as commercial,industrial, and automotives areas.

We are looking forward to setting up business relationship with you and hope to provide you with the best service and solution. Let us make a better world for our industry!



Contact us

Tel: +86-755-8981 8866 Fax: +86-755-8427 6832

Email & Skype: info@chipsmall.com Web: www.chipsmall.com

Address: A1208, Overseas Decoration Building, #122 Zhenhua RD., Futian, Shenzhen, China



ROTARY SWITCHES



Fig. 1



Fig. 2



Fig. 3

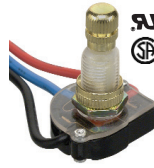


Fig. 4



Fig. 5



Fig. 6



Fig. 7

Retail Part No.	Bulk Part No.	Fig. No.	Poles/Throws	Amps 125 VAC	Amps 250 VAC	Action	Actuator	Terminal Type	Mounting Style	Mounting Hole (In)	Hardware	Spec Drawing Page No.
35-859	35-859-BU	1	SPST	3	1.5	On/Off	White Plastic	6" Wire Leads	Snap-In	0.500		301-A
35-855	35-855-BU	2	SPST	6	3	On/Off	Brass Knob	6" Wire Leads	Threaded Bushing	0.375	KN, FN	301-B
35-856	35-856-BU	3	SPST	6	3	On/Off	Black Plastic	6" Wire Leads	Threaded Bushing	0.375	N, FN	301-C
35-1857	35-1857-BU	4	SP3T	6	3	Off/On/On/On	Brass Knob	6" Wire Leads	Threaded Bushing	0.375	N, FN	301-D

Retail Part No.	Bulk Part No.	Fig. No.	Amps (Cont.)	Amps 125 VAC	Amps 250 VDC	Positions	Poles	Index	Actuator	Terminal Type	Mounting Style	Mounting Hole (In)	Hardware	Spec Drawing Page No.
35-375	35-375-BU	5		0.3†		6	2	30°	1/4" Metal	Sd Eyelet	Shorting	0.375	N, LR	301-E
35-376	35-376-BU	5		0.3†		12	1	30°	1/4" Metal	Sd Eyelet	Shorting	0.375	N, LR	301-E
35-377	35-377-BU	5				5	2	30°	1/4" Metal	Sd Eyelet	Non-Shorting	0.375	N, LR	301-E
35-378	35-378-BU	5		0.3†		3	3	30°	1/4" Metal	Sd Eyelet	Non-Shorting	0.375	N, LR	301-E
35-379	35-379-BU	5		0.3†		4	3	30°	1/4" Metal	Sd Eyelet	Shorting	0.375	N, LR	301-E
35-1212		6	6	250mA*		12 No Stop	1	30°	1/2" Metal	Sd Eyelet	Non-Shorting	0.250	N, LR, W	301-F
35-1226		6	6	250mA*		6 No Stop	2	30°	1/2" Metal	Sd Eyelet	Non-Shorting	0.250	N, LR, W	301-F
35-1306		7	5	2.5	350mA	6	1	30°	1/4" Plastic	Sd Lug	Non-Shorting	0.386	N, LR	301-G
35-1312		7	5	2.5	350mA	12 No Stop	1	30°	1/4" Plastic	Sd Lug	Non-Shorting	0.386	N, LR	301-G
35-1314		7	5	2.5	350mA	12	1	30°	1/4" Plastic	Sd Lug	Non-Shorting	0.386	N, LR, StR	301-G
35-1324		7	5	2.5	350mA	4	2	30°	1/4" Plastic	Sd Lug	Non-Shorting	0.386	N, LR	301-G
35-1334		7	5	2.5	350mA	4	3	30°	1/4" Plastic	Sd Lug	Non-Shorting	0.386	N, LR	301-G
35-1343		7	5	2.5	350mA	3	4	30°	1/4" Plastic	Sd Lug	Non-Shorting	0.386	N, LR	301-G
35-1323		7	5	2.5	350mA	8	1	45°	1/4" Plastic	Sd Lug	Non-Shorting	0.386	N, LR, StR	301-G

Notes: *Or 28VDC
Adj.=Adjustable Stop
†=Or 30V DC
Non-Shorting=break before make

FN=Face Nut
KN=Knurled Nut
LR=Locking Ring
N=Nut

Sd=Solder
StR=Stop Ring
W=Washer

SLIDE SWITCHES

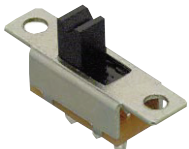


Fig. 8

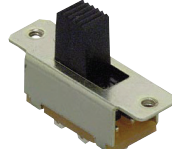


Fig. 9

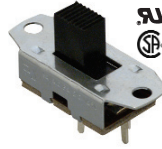


Fig. 10

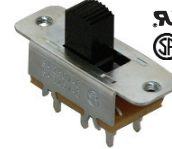


Fig. 11

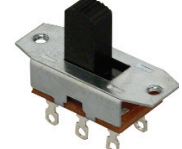


Fig. 12

Retail Part No.	Bulk Part No.	Fig. No.	Circuit Funct.	Poles & Throws	Amps 125 VAC	Amps 250 VAC	Amps 30 VAC	Amps 125 VDC	Actuator Style	Terminal Type	Mounting Style	Spec Drawing Page No.
35-202	35-202-BU	8	On/On	SPDT			0.30	1/2	Black Plastic	Solder Lug	Surface	301-H
35-204	35-204-BU	9	On/On	DPDT			3	1/2	Black Plastic	Solder Lug	Surface	301-I
35-210	35-210-BU	10	On/On	SPDT	6				Black Plastic	Printed Circuit Board Lug	Surface	301-J
35-222	35-222-BU	11	On/On	DPDT	6	3			Black Plastic	Printed Circuit Board Lug	Surface	301-K
35-242	35-242-BU	12	On/On	DPDT	11				Black Plastic	Solder Lug	Surface	301-L

Retail Part No.	Bulk Part No.	Fig. No.	Number of Positions	Profile	Spec Drawing Page No.
35-953		13	4	Side Actuated	301-M
35-957		13	8	Side Actuated	301-M
35-961	35-961-BU	14	1	Standard	301-N
35-962		14	2	Standard	301-N
35-963		14	3	Standard	301-N
35-964	35-964-BU	14	4	Standard	301-N
35-965		14	5	Standard	301-N
35-966	35-966-BU	14	6	Standard	301-N
35-967		14	7	Standard	301-N
35-968	35-968-BU	14	8	Standard	301-N
35-969		14	9	Standard	301-N
35-970	35-970-BU	14	10	Standard	301-N
35-974		14	12	Standard	301-N
35-971		15	8	Right Angle	301-N

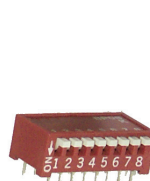


Fig. 13

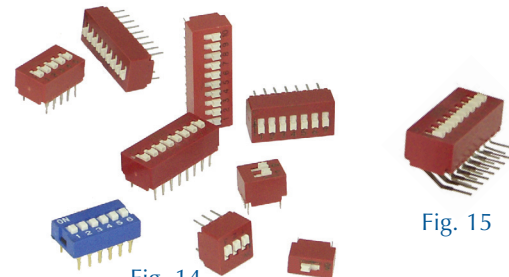


Fig. 14

Fig. 15

Rating:
100mA@50Vdc (carry)
100mA@5Vdc
25mA@25Vdc

Note: All figures are for illustration purpose only, and the number/type of terminals may vary.