



Chipsmall Limited consists of a professional team with an average of over 10 year of expertise in the distribution of electronic components. Based in Hongkong, we have already established firm and mutual-benefit business relationships with customers from,Europe,America and south Asia,supplying obsolete and hard-to-find components to meet their specific needs.

With the principle of "Quality Parts,Customers Priority,Honest Operation,and Considerate Service",our business mainly focus on the distribution of electronic components. Line cards we deal with include Microchip,ALPS,ROHM,Xilinx,Pulse,ON,Everlight and Freescale. Main products comprise IC,Modules,Potentiometer,IC Socket,Relay,Connector.Our parts cover such applications as commercial,industrial, and automotives areas.

We are looking forward to setting up business relationship with you and hope to provide you with the best service and solution. Let us make a better world for our industry!



## Contact us

Tel: +86-755-8981 8866 Fax: +86-755-8427 6832

Email & Skype: info@chipsmall.com Web: www.chipsmall.com

Address: A1208, Overseas Decoration Building, #122 Zhenhua RD., Futian, Shenzhen, China



# "High Frequency Ceramic Solutions"

## 3.5 GHz (ETSI Band) Balun/Filter Combination

P/N 3500FB39A0050

Detail Specification: 08/14/07

Page 1 of 2

### General Specifications

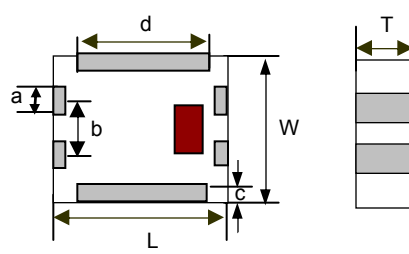
Part Number	3500FB39A0050
Frequency (MHz)	3400 - 3600
Unbalanced Impedance	50 $\Omega$
Balanced Impedance	50 $\Omega$
Insertion Loss	2.9 dB max.
Return Loss	9.5 dB min.
Phase Difference	180° $\pm$ 12
Amplitude Difference	1.5 dB max.
Operating + Storage Temp.	-40 to +85°C
Reel Quantity	4000
Power Capacity	0.5 watt max.

Attenuation (dB)	35 min. @ 680~720MHz
	35 min. @ 1088~1152MHz
	45 min. @ 2040~2160MHz
	32 min. @ 2720~2880MHz
	15 min. @ 4080~4320MHz
	20 min. @ 4760~5040MHz
	25 min. @ 5440~5760MHz
	20 min. @ 7480~7920MHz
15 min. @ 8840~9360MHz	
MSL	2 *

\* - 1 yr shelf life in bag; 1 week shelf life out of bag;  
Vacuum reseal unused reel

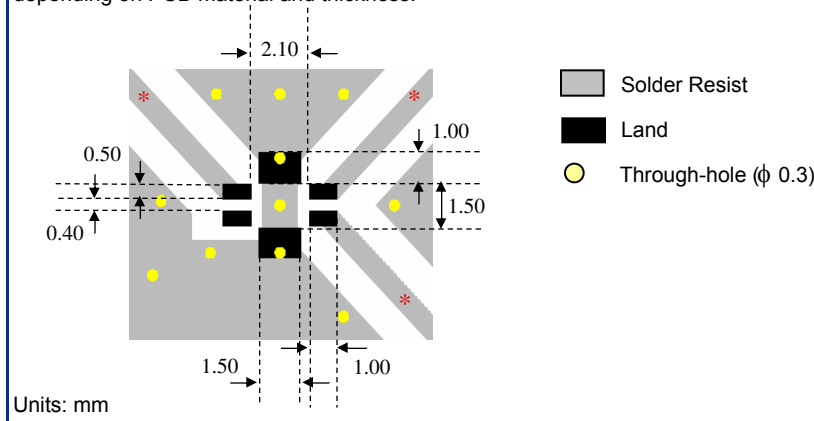
### Mechanical Dimensions

	In	mm
L	0.098 $\pm$ 0.008	2.50 $\pm$ 0.20
W	0.079 $\pm$ 0.008	2.00 $\pm$ 0.20
T	0.043 $\pm$ 0.004	1.10 $\pm$ 0.10
a	0.016 $\pm$ 0.008	0.40 $\pm$ 0.20
b	0.031 $\pm$ 0.008	0.80 $\pm$ 0.20
c	0.012 +.004/-.008	0.30 +0.1/-0.2
d	0.075 $\pm$ 0.008	1.90 $\pm$ 0.20



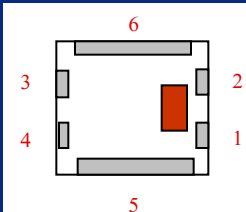
### Mounting Considerations

\* Line width should be designed to match specified characteristic impedance, depending on PCB material and thickness.



### Terminal Configuration

No.	Function
1	Unbalanced Port
2	NC or DC Feed
3	Balanced Port
4	Balanced Port
5	GND
6	GND



Johanson Technology, Inc. reserves the right to make design changes without notice.  
All sales are subject to Johanson Technology, Inc. terms and conditions.



[www.johansontechology.com](http://www.johansontechology.com)

4001 Calle Tecate • Camarillo, CA 93012 • TEL 805.389.1166 FAX 805.389.1821

2007 Johanson Technology, Inc. All Rights Reserved

# "High Frequency Ceramic Solutions"

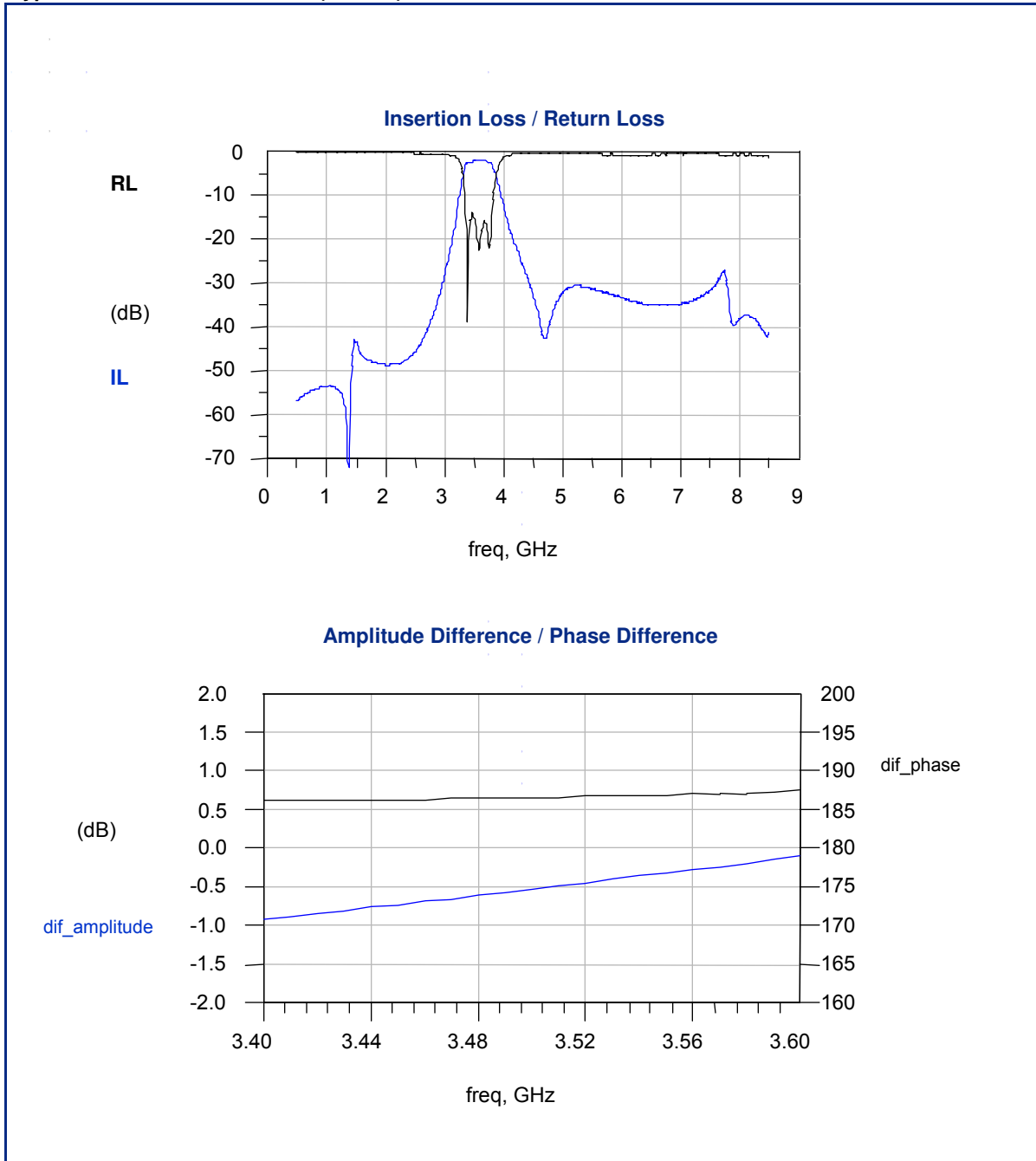
3.5 GHz (ETSI Band) Balun/Filter Combination

P/N 3500FB39A0050

Detail Specification: 08/14/07

Page 2 of 2

Typical Electrical Performance (T=25°C)



Johanson Technology, Inc. reserves the right to make design changes without notice.

All sales are subject to Johanson Technology, Inc. terms and conditions.



[www.johansontechnology.com](http://www.johansontechnology.com)

4001 Calle Tecate • Camarillo, CA 93012 • TEL 805.389.1166 FAX 805.389.1821

2007 Johanson Technology, Inc. All Rights Reserved