



Chipsmall Limited consists of a professional team with an average of over 10 year of expertise in the distribution of electronic components. Based in Hongkong, we have already established firm and mutual-benefit business relationships with customers from,Europe,America and south Asia,supplying obsolete and hard-to-find components to meet their specific needs.

With the principle of “Quality Parts,Customers Priority,Honest Operation,and Considerate Service”,our business mainly focus on the distribution of electronic components. Line cards we deal with include Microchip,ALPS,ROHM,Xilinx,Pulse,ON,Everlight and Freescale. Main products comprise IC,Modules,Potentiometer,IC Socket,Relay,Connector.Our parts cover such applications as commercial,industrial, and automotives areas.

We are looking forward to setting up business relationship with you and hope to provide you with the best service and solution. Let us make a better world for our industry!



Contact us

Tel: +86-755-8981 8866 Fax: +86-755-8427 6832

Email & Skype: info@chipsmall.com Web: www.chipsmall.com

Address: A1208, Overseas Decoration Building, #122 Zhenhua RD., Futian, Shenzhen, China



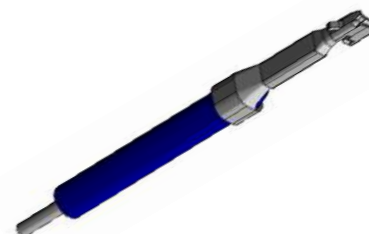
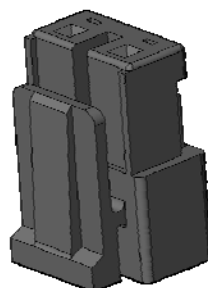
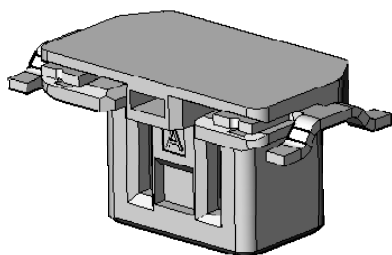
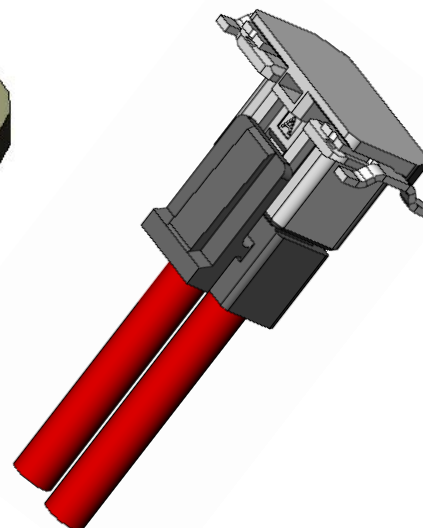
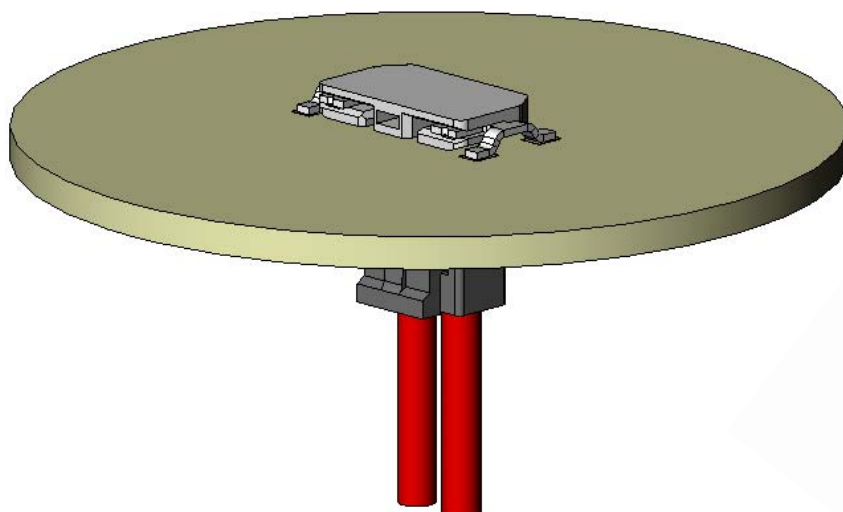


Board-to Cable Connector For LED Lighting Power Supply CONNECTOR

ES3 Series (WF2 Type)
(cULus Certified Product)

MB-0227-3

July 2012


RoHS Compliant**Receptacle (ES3B002WF2)****Plug (ES3S002SZA)****Contact (IL-Z-C1-A)**

The ES3 Series is a 2-position board-to-cable connector that is ideal for LED lighting devices like LED light bulbs and downlights.

This connector enables direct connection of the converter board and the LED mounting board with a cable.

The pin connector for the LED mounting board is available in embossed reel packaging for SMT automated mounting. It allows reflow solder mounting to the LED mounting board to occur at the same time that other LED chips and SMT electrical parts are mounted.

Features

- Low-profile design (mounting height: 1.65mm) to prevent interference with emission of LED light.
- Insulator for pin connector uses white LCP with superior heat and light resistance ideal for the mounted environment.
- Board-to-cable connection of LED mounting board and converter board allows for greater freedom in the layout of parts.
- Mechanical lock strongly resists vibration and pulling to prevent un-mating and incomplete mating.
- Uses the IL-Z Series socket contact, which has a long sales history.
- cULus Certification: File No. E67741 

General Specifications

- | | |
|--------------------------------------------------------------|--------------------------------------------------------|
| ■No. of Contacts: 2 pos. | ■Rated Current: AC, DC 2A |
| ■Contact Resistance: 30m Ω max. (initial) | ■Rated Voltage: AC, DC 200V |
| ■Dielectric Withstanding Voltage:
AC2000Vr.m.s per minute | ■Insulation Resistance: 10M Ω min. (after test) |
| ■Mating Cycles: 20 times | ■Operating Temperature:
-40 Deg. C to +105 Deg. C |
| ■Connector Insertion Force: 15N max. | ■Applicable Wire: 22AWG to 26AWG |

Materials and Finishes

ES3B002WF2

Component	Material and Finish
Insulator	White LCP
Contact	Copper alloy / Sn plating

ES3S002SZA

Component	Material and Finish
Socket	66 Nylon

IL-Z-C1-A-7000

Component	Material and Finish
Socket Contact	Phosphor bronze / Sn plating

Ordering Information

ES3 B 002 W F 2 R****

Series

Reel Part Number (Note 1)

Connection Type

B: Sunk-into-the-board

S: Socket Housing

Modification Code

No. of Contacts

Plating of Connection Area

F: Sn plating

Z: No plating (Housing)

Attachment to Board

W: SMT straight type, without hold-down

S: Socket for cable crimp connection

Note1) An embossed tape reel contains 1,000 pieces.

ES3 S 002 S Z A

Series

Modification Code

Connection Type

B: Sunk-into-the-board

S: Socket Housing

No. of Contacts

Plating of Connection Area

F: Sn plating

Z: No plating (Housing)

Attachment to Board

W: SMT straight type, without hold-down

S: Socket for cable crimp connection

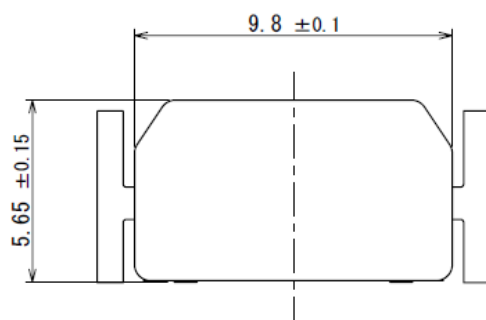
Part Number List

Type	Part Number	Drawing No.
Pin Connector	ES3B002WF2	SJ111730
Socket Connector	ES3S002SZA	SJ111733
Contact	IL-Z-C1-A-7000	SJ026615

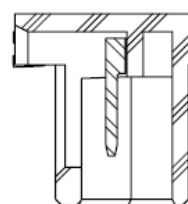
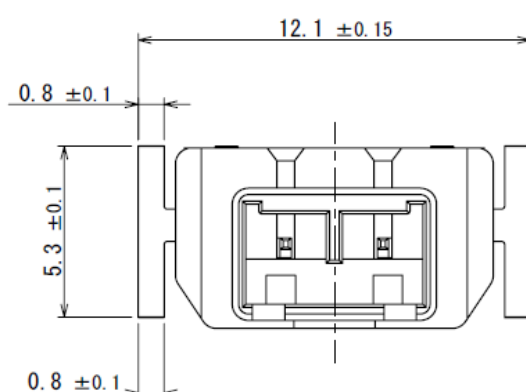
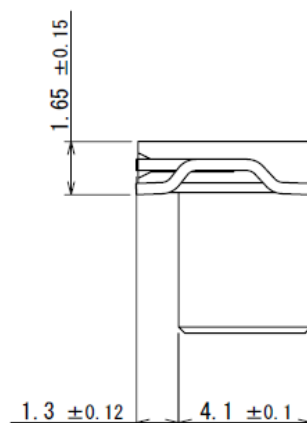
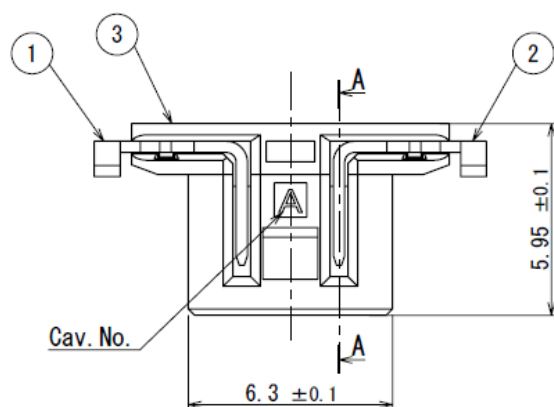
Product Drawing

Unit: mm

Part Number	ES3B002WF2
Drawing No.	SJ111730

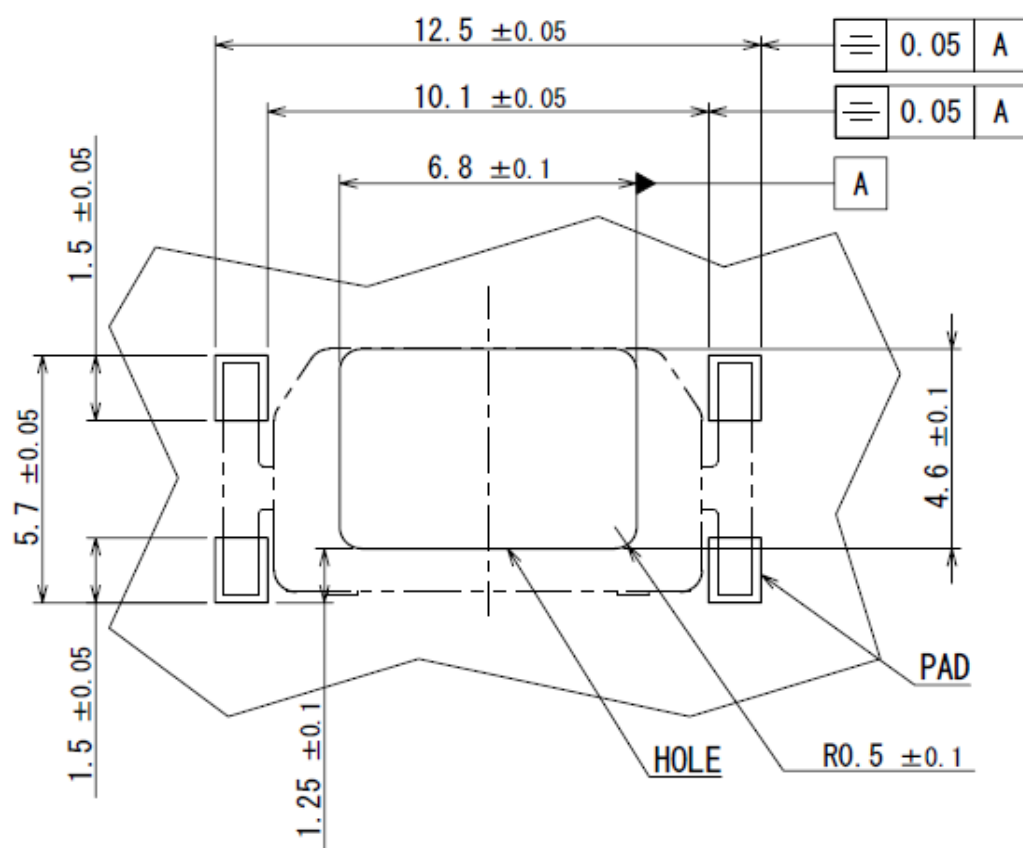


LISTED BY UL/cUL

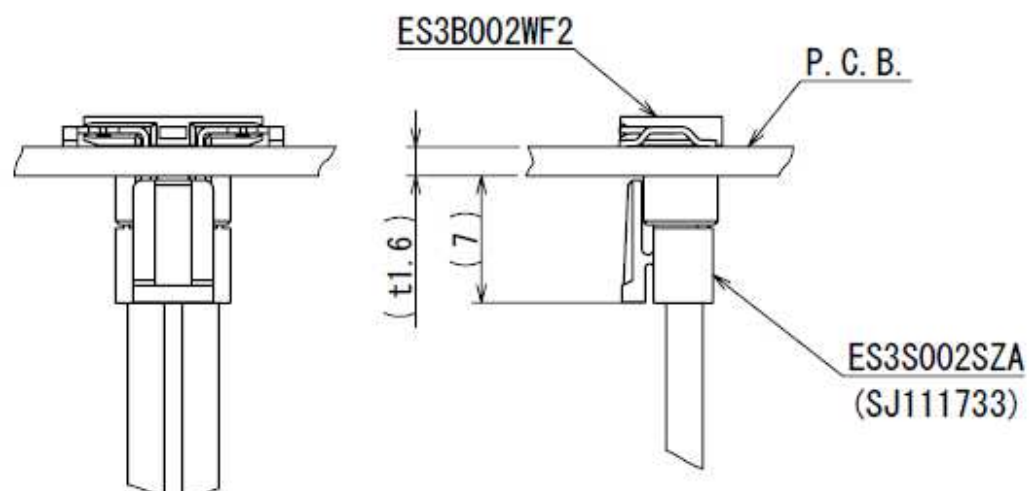
A-A
(5 : 1)

3	INSULATOR	1	LCP		COLOR: WHITE
2	CONTACT-R	1	COPPER ALLOY	LEAD-FREE TIN PLATING	
1	CONTACT-L	1	COPPER ALLOY	LEAD-FREE TIN PLATING	
符号 NO.	名 称 DESCRIPTION	個 数 QTY.	材 料 MATERIAL	仕 上 FINISH	備 考 REMARKS

Unit: mm



Applicable Board Dimensions (SMT side, for reference)



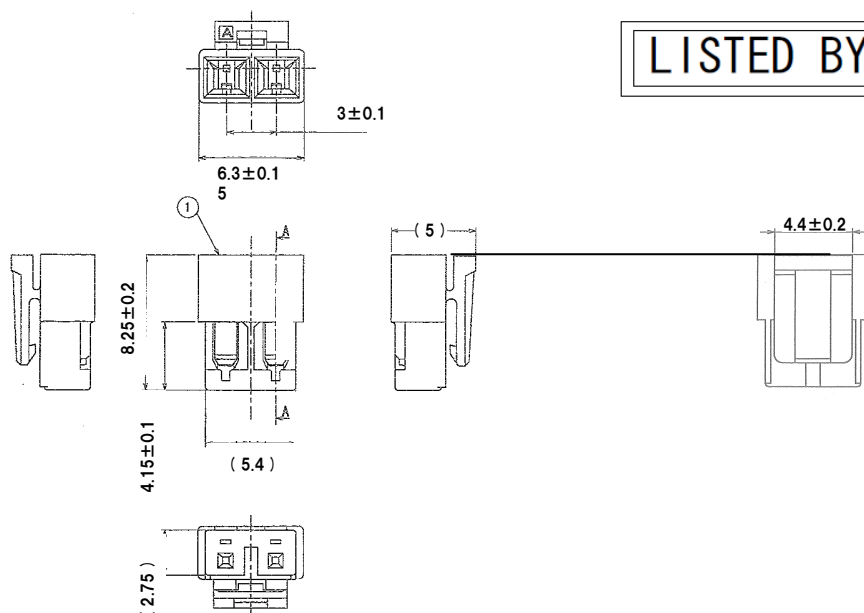
Drawing When Mated (for reference)

Unit: mm



Part Number	ES3S002SZA
Drawing No.	SJ111733

Unit: mm

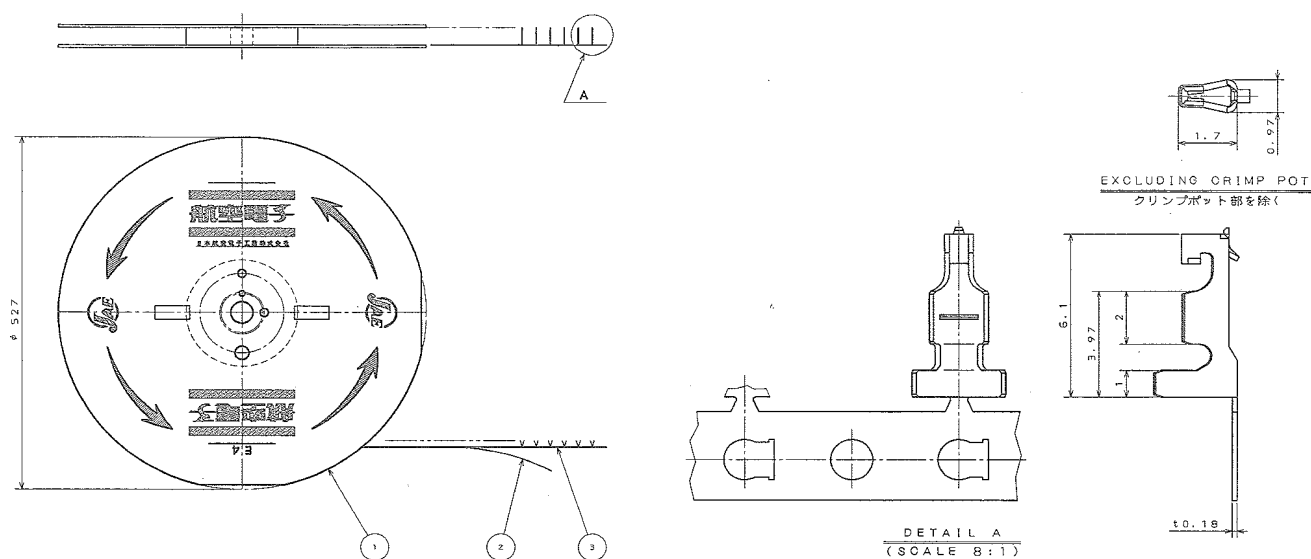


LISTED BY UL/cUL

1	HOUSING	1	6-6Ny	—	COLOR: BLACK
符号 NO.	名 称 DESCRIPTION	個 数 QTY.	材 料 MATERIAL	仕 上 FINISH	備 考 REMARKS

Part Number	IL-Z-C1-A-7000
Drawing No.	SJ026615

Unit: mm

EXCLUDING CRIMP POT
クリンプポット部を除くDETAIL A
(SCALE 8:1)

3	SOCKET CONTACT	7000	PHOSPHOR BRONZE	TIN PLATING	TIN PLATING 1μm min.
2	PAPER TAPE	1	PAPER	—	—
1	MAGAGINE	1	PAPER	—	—
ITEM 符号	DESCRIPTION 名 称	Q 'TY 個 数	MATERIAL 材 料	FINISH 仕 上	REMARKS 備 考

Crimping Tool

Cable Size	Hand Tool	Press	Semi Automatic Applicator
AWG22 to AWG26	CT150-4-ILZ1	CP215-5B	3502-ILZ1-2

Technical Bulletin

Specification	JACS-10804
Instruction Manual	JAHL-10804

Japan Aviation Electronics Industry, Limited

Product Marketing Division
Aobadai Building, 3-1-19, Aobadai, Meguro-ku, Tokyo 153-8539
Phone: +81-3-3780-2787 FAX: +81-3-3780-2946

Notice: Products shown in this brochure are made for the applications listed below. However, if the above-mentioned products are to be used in aerospace devices, marine cable-connection devices, atomic power control systems, medical equipment for life-support systems, or any other specific application requiring extremely high reliability, please contact JAE for further information.
Recommended applications: Computers, Office machines, Measuring devices, Telecommunication devices (Terminals, Mobile devices), AV devices, Household applications, FA devices, etc.

* The specifications in this brochure are subject to change without notice. Please contact JAE for information.