



Chipsmall Limited consists of a professional team with an average of over 10 year of expertise in the distribution of electronic components. Based in Hongkong, we have already established firm and mutual-benefit business relationships with customers from,Europe,America and south Asia,supplying obsolete and hard-to-find components to meet their specific needs.

With the principle of “Quality Parts,Customers Priority,Honest Operation,and Considerate Service”,our business mainly focus on the distribution of electronic components. Line cards we deal with include Microchip,ALPS,ROHM,Xilinx,Pulse,ON,Everlight and Freescale. Main products comprise IC,Modules,Potentiometer,IC Socket,Relay,Connector.Our parts cover such applications as commercial,industrial, and automotives areas.

We are looking forward to setting up business relationship with you and hope to provide you with the best service and solution. Let us make a better world for our industry!



Contact us

Tel: +86-755-8981 8866 Fax: +86-755-8427 6832

Email & Skype: info@chipsmall.com Web: www.chipsmall.com

Address: A1208, Overseas Decoration Building, #122 Zhenhua RD., Futian, Shenzhen, China



© COPYRIGHT 1972 BY AMP INCORPORATED, HARRISBURG, PA.
ALL INTERNATIONAL RIGHTS RESERVED. AMP INCORPORATED PRODUCTS
COVERED BY U. S. AND FOREIGN PATENTS AND/OR PATENTS PENDING.

2

1

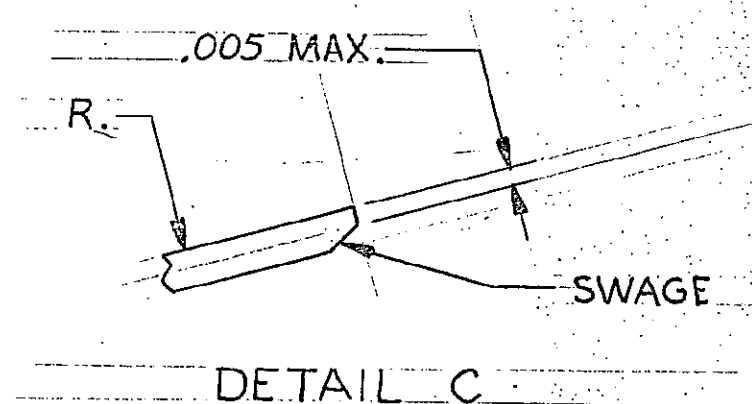
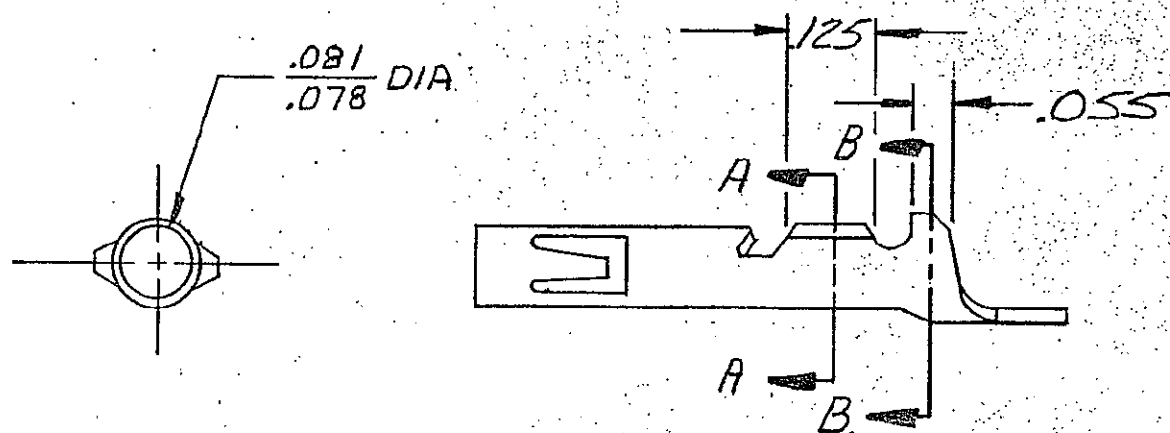
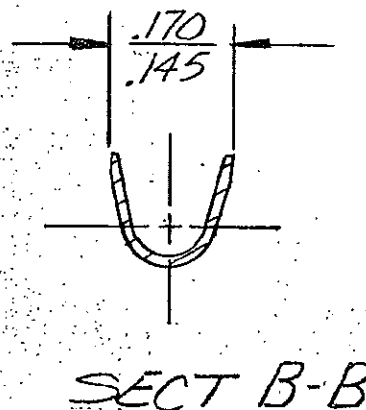
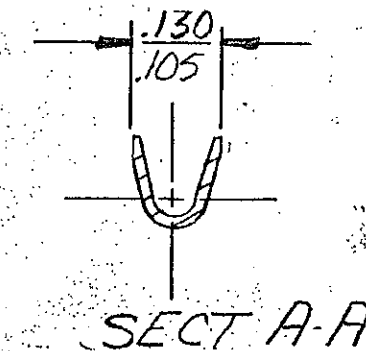
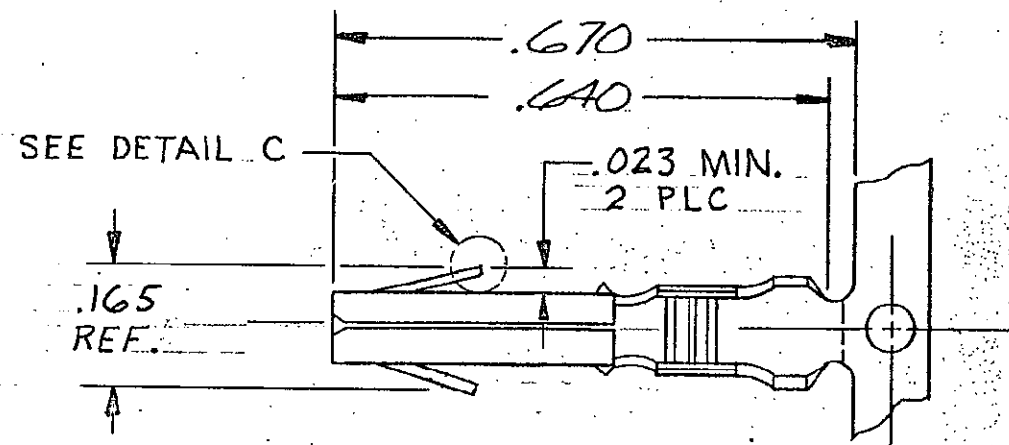
LOC

CM

DIST

53

		REVISIONS				
P	F	ZONE	LTR	DESCRIPTION	DATE	APPROVED
✓	✓		F	REDWN W/O CHNG M-5090	4-28-78	MSF/S.H.
✓	✓		G	ADDED WIRE RANGE & INSUL DIA, M-6708	11-10-81	MSF/S.H.
✓	✓		H	ADDED 350217-4	3/20/82	DMS/CM
✓			H	RESTORED	3/28/85	BKD/RS
✓			J	OBSOLETE - 3 & -7 PER CM-473	6-5-86	KW/RS
✓			K	OBSOLETE - 2 PER ECN CM-761	4/28/87	PVC/TB
✓			L	REV PER EC 0730-3607-91	1-5-94	RV/RS
			M	OBS-4 PER EC 0730-0127-96	6-19-97	JH/RS



USE W/MINI-APPLICATOR	BRASS	PRE-TIN	350217-1
REMARKS	MAT'L	FINISH	PART NO

UNLESS OTHERWISE
SPECIFIED DIMENSIONS
ARE IN INCHES.
TOLERANCES ON:
DECIMALS $\pm .015$
ANGLES $\pm 1^\circ$

WIRE RANGE
20-14-AWG

INSULATION DIA
.130 MAX

CONTRACT NO

DR *[Signature]* 4-28-78

CHK *[Signature]* 11/6/78

APPD *[Signature]* 11/7

APPD

DSGN APPD

OTHER APPD



AMP INCORPORATED
Harrisburg, Pa.

NAME
SOCKET, MATE-N-LOK,
DUAL LANCE

SIZE

B

CODE IDENT NO

00779

DRAWING NO

350217

SCALE 4-1

SHEET 1 OF 1