



Chipsmall Limited consists of a professional team with an average of over 10 year of expertise in the distribution of electronic components. Based in Hongkong, we have already established firm and mutual-benefit business relationships with customers from,Europe,America and south Asia,supplying obsolete and hard-to-find components to meet their specific needs.

With the principle of “Quality Parts,Customers Priority,Honest Operation,and Considerate Service”,our business mainly focus on the distribution of electronic components. Line cards we deal with include Microchip,ALPS,ROHM,Xilinx,Pulse,ON,Everlight and Freescale. Main products comprise IC,Modules,Potentiometer,IC Socket,Relay,Connector.Our parts cover such applications as commercial,industrial, and automotives areas.

We are looking forward to setting up business relationship with you and hope to provide you with the best service and solution. Let us make a better world for our industry!



Contact us

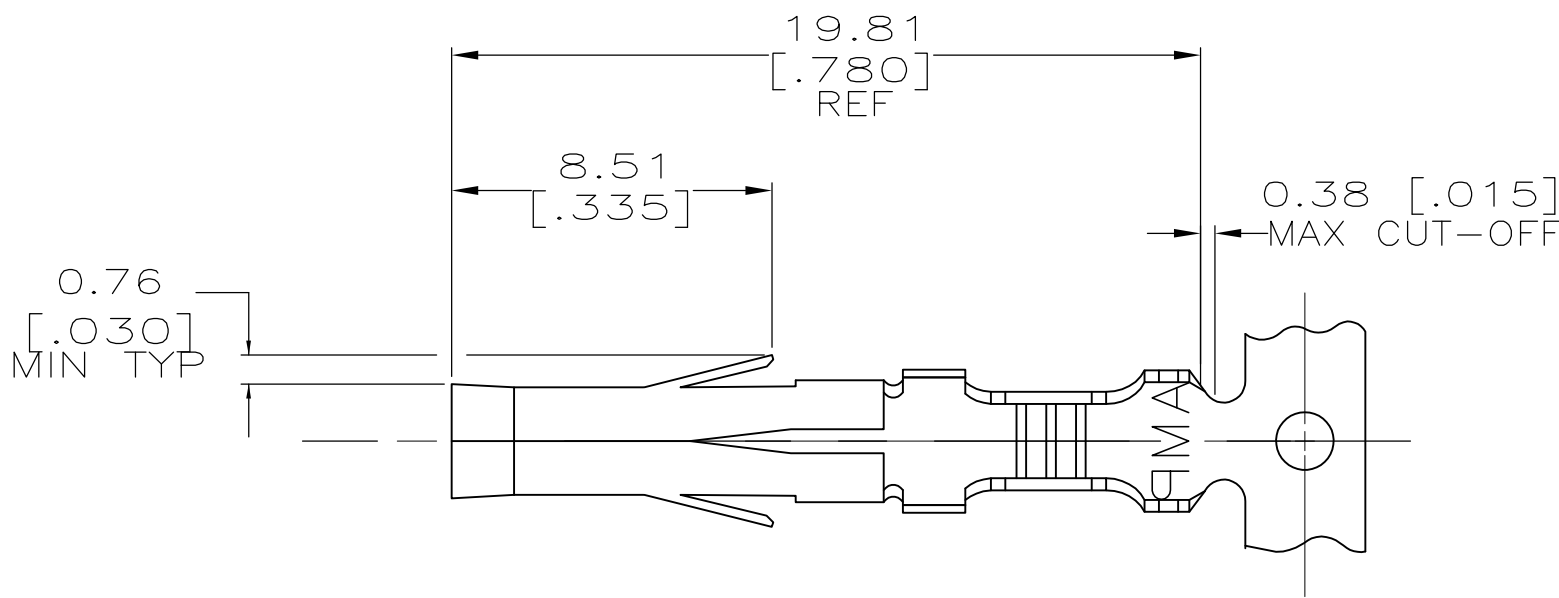
Tel: +86-755-8981 8866 Fax: +86-755-8427 6832

Email & Skype: info@chipsmall.com Web: www.chipsmall.com

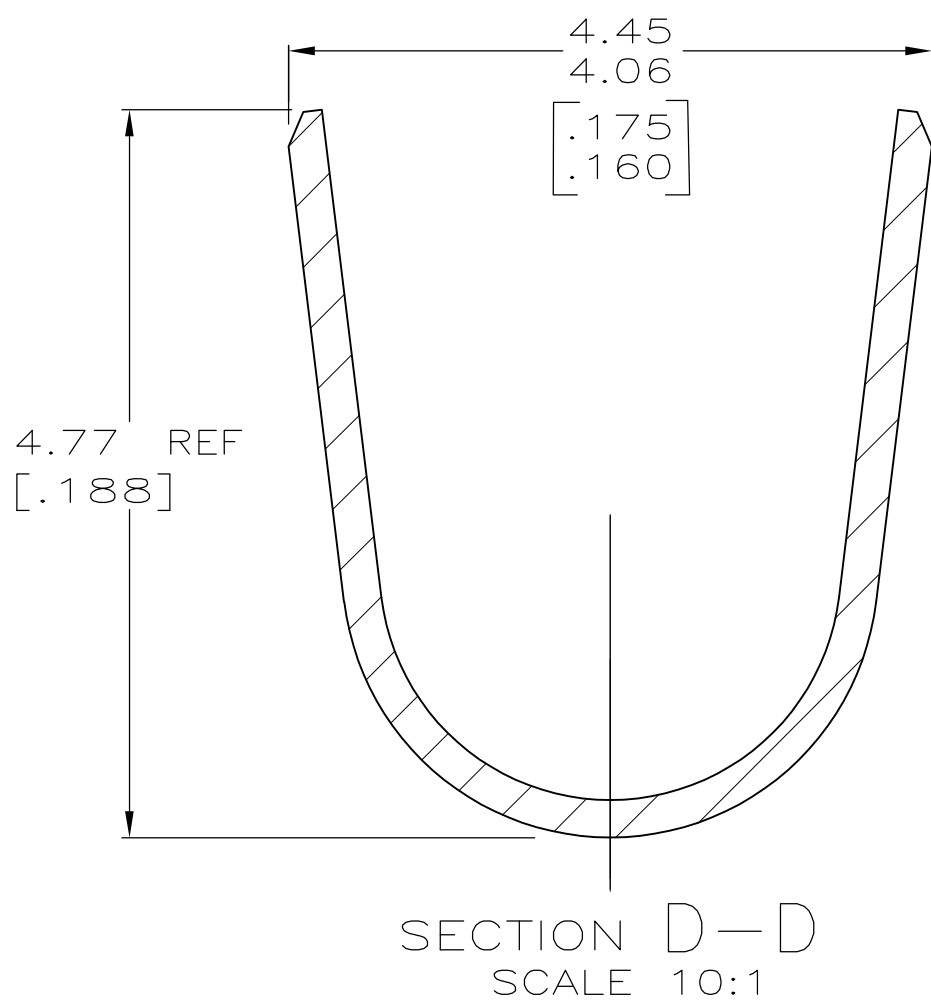
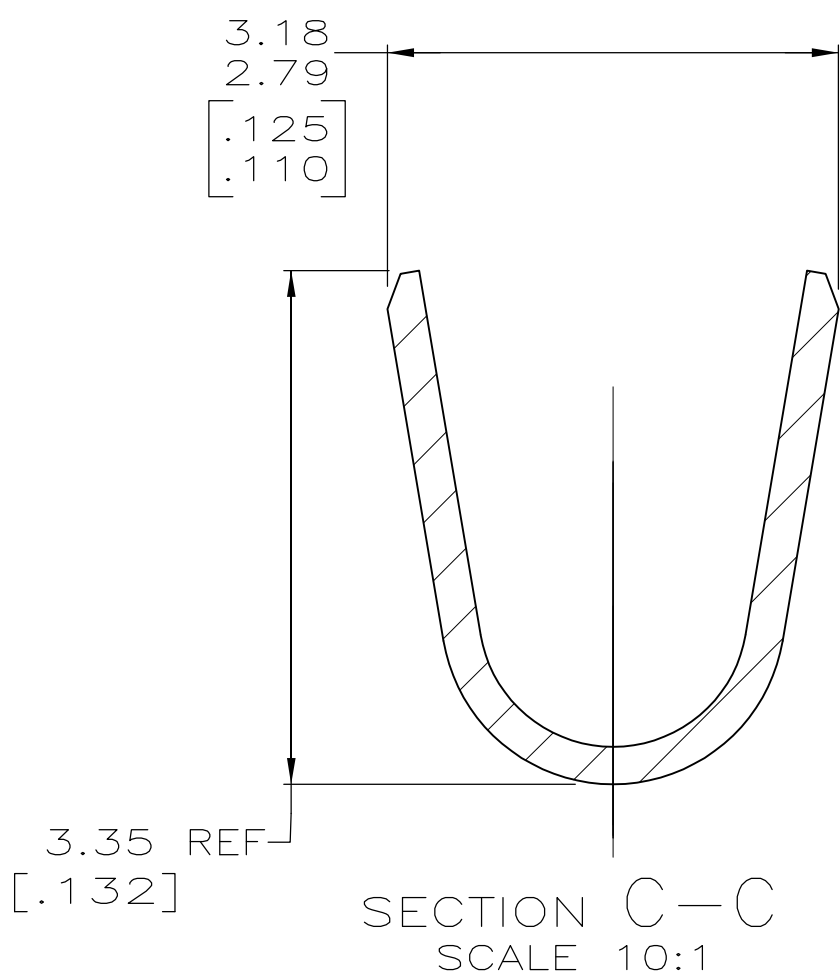
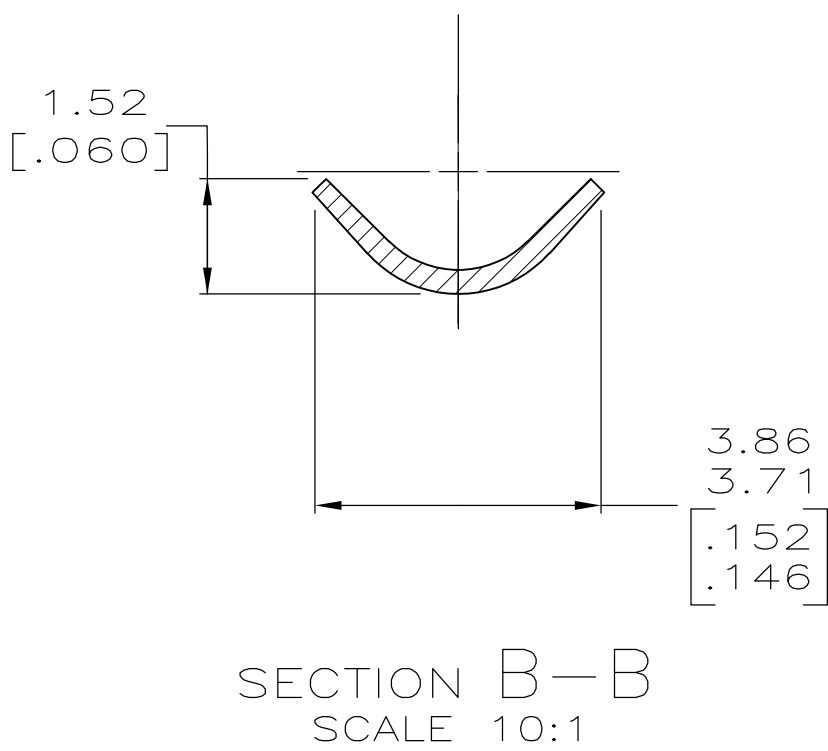
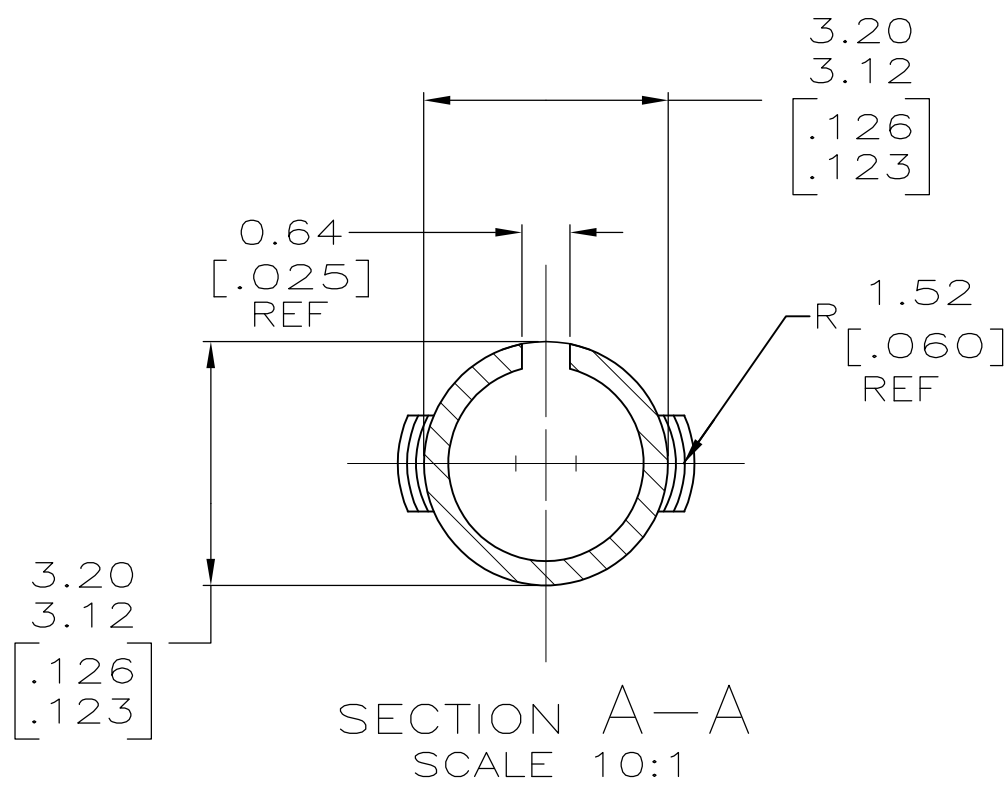
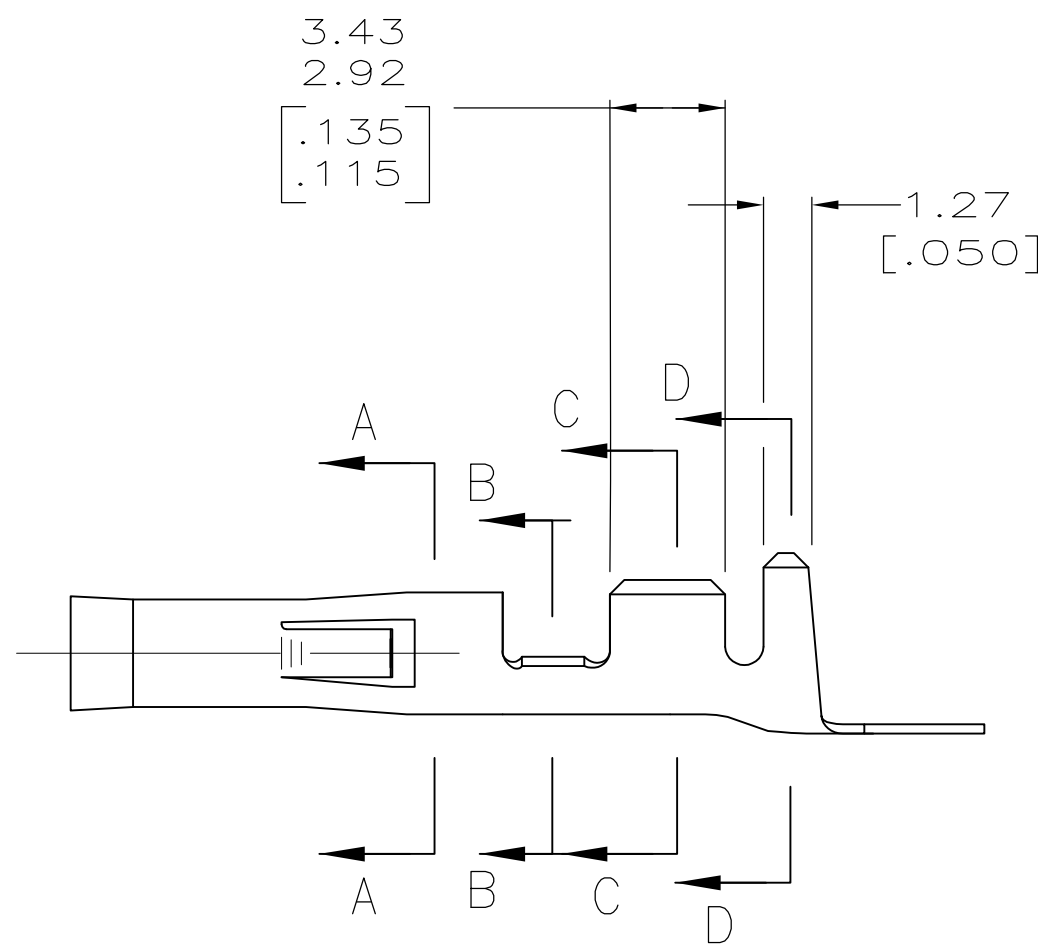
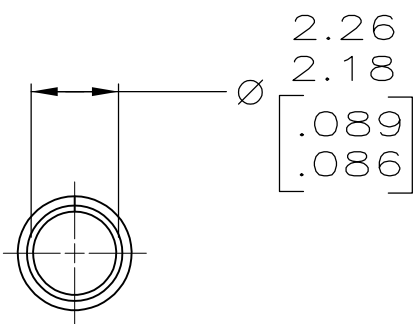
Address: A1208, Overseas Decoration Building, #122 Zhenhua RD., Futian, Shenzhen, China



LOC	DIST	REVISIONS				
		P	LTR	DESCRIPTION	DATE	DWN APVD
CM	0		AL1	REVISED PER ECO-11-004820	11MAR11	RK HMR


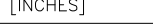


- WIRE RANGE: 0.5–2mm² (20–14 AWG).
- INSULATION RANGE: 3.56 [.140] MAX. DIA.
- DIMENSIONS IN BRACKETS ARE IN INCHES.
- 0.00076 [.000030] MIN GOLD STRIPE OVER 0.00127 [.000050] MIN NICKEL ON INSIDE OF SOCKET.



METRIC

PRE-TIN	0.25 [.010] PHOS BRZ	350415-6
	0.25 [.010] BRASS	350415-5
PRE-TIN	0.25 [.010] BRASS	350415-1
FINISH	MATERIAL	PART NO

THIS DRAWING IS A CONTROLLED DOCUMENT.		DWN K. WHITAKER 22NOV2005	 TE Connectivity			
DIMENSIONS: mm [INCHES]		CHK D. COLEY 22NOV2005				
	TOLERANCES UNLESS OTHERWISE SPECIFIED: 0 PLC ± - 1 PLC ± - 2 PLC ± - 3 PLC ± 0.13 [.005] 4 PLC ± - ± 0°30' ANGLES	APVD D. COLEY 22NOV2005	NAME .093 SOCKET COMMERICAL PIN AND SOCKET -			
			PRODUCT SPEC			
			APPLICATION SPEC			
			WEIGHT -			
MATERIAL SEE TABLE		FINISH SEE TABLE		SIZE A1		
				CAGE CODE 00779		
				DRAWING NO 350415		
				RESTRICTED TO -		
				SCALE 5:1		
				SHEET 1 OF 1		
				REV AL		
				CUSTOMER DRAWING		