



Chipsmall Limited consists of a professional team with an average of over 10 year of expertise in the distribution of electronic components. Based in Hongkong, we have already established firm and mutual-benefit business relationships with customers from,Europe,America and south Asia,supplying obsolete and hard-to-find components to meet their specific needs.

With the principle of “Quality Parts,Customers Priority,Honest Operation,and Considerate Service”,our business mainly focus on the distribution of electronic components. Line cards we deal with include Microchip,ALPS,ROHM,Xilinx,Pulse,ON,Everlight and Freescale. Main products comprise IC,Modules,Potentiometer,IC Socket,Relay,Connector.Our parts cover such applications as commercial,industrial, and automotives areas.

We are looking forward to setting up business relationship with you and hope to provide you with the best service and solution. Let us make a better world for our industry!



Contact us

Tel: +86-755-8981 8866 Fax: +86-755-8427 6832

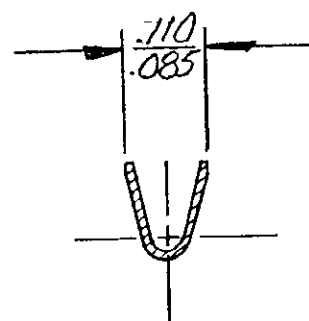
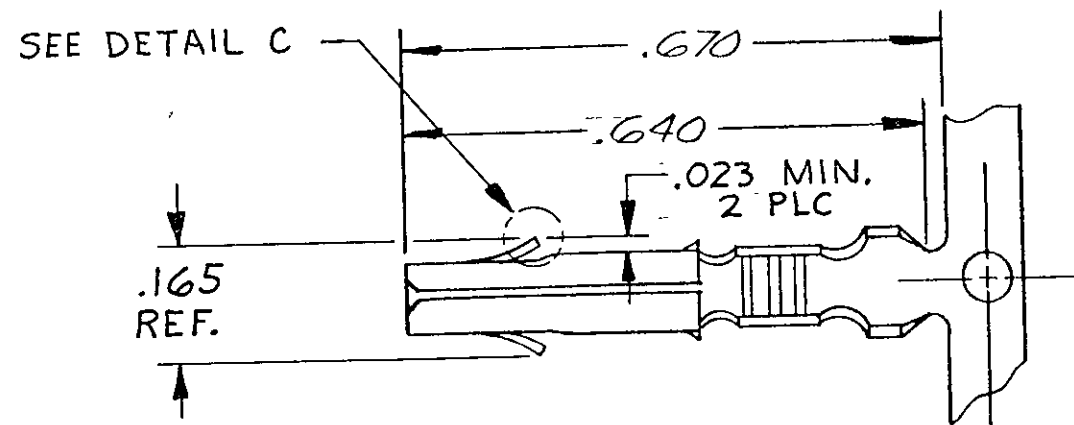
Email & Skype: info@chipsmall.com Web: www.chipsmall.com

Address: A1208, Overseas Decoration Building, #122 Zhenhua RD., Futian, Shenzhen, China

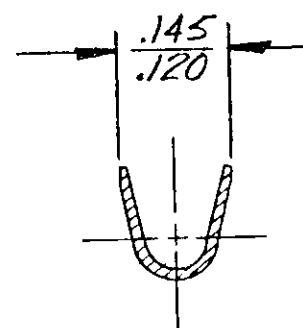
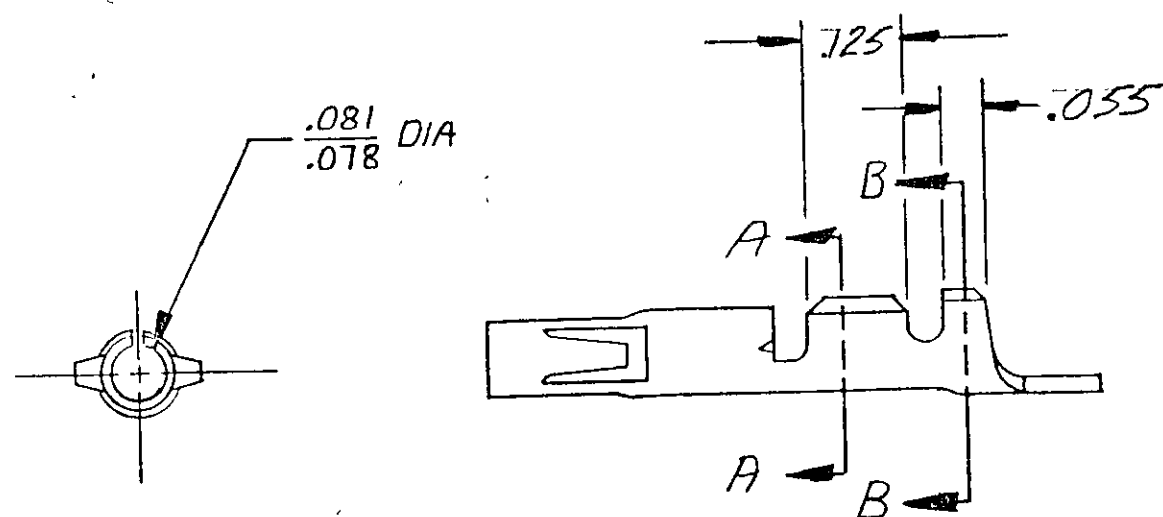


6 DRAWING MADE IN THIRD ANGLE PROJECTION

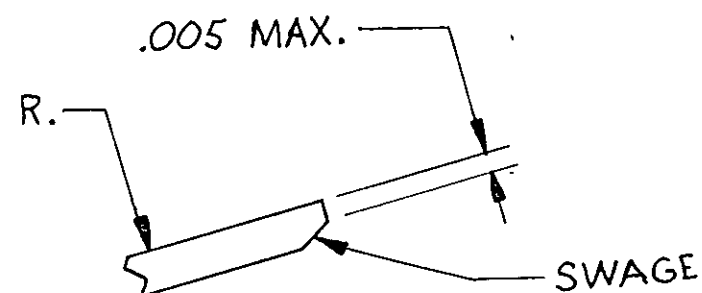
© COPYRIGHT 1973 BY AMP INCORPORATED, HARRISBURG, PA.
ALL INTERNATIONAL RIGHTS RESERVED. AMP INCORPORATED PRODUCTS
COVERED BY U. S. AND FOREIGN PATENTS AND/OR PATENTS PENDING.



SECTION A-A



SECTION B-B



DETAIL C

		REVISIONS				
P	F	ZONE	LTR	DESCRIPTION	DATE	APPROVED
✓	✓		E	REDWN W/O CHANGE M-5090	5-3-78	JW/DH.
✓			E	RESTORED	4/3/85	BKD/RS
✓			F	OBSOLETE -7 CM-473	4-15-86	KW/RS
✓			G	OBSOLETE-2 PER ECN CM-761	4/28/87	PKC TB
			H	REV PER EC 0730-3607-91	1-6-94	RV RS

.100 MAX	24-18 AWG			
		BRASS	PRE-TIN	350560-1
		MAT'L	FINISH	PART NO

UNLESS OTHERWISE SPECIFIED DIMENSIONS ARE IN INCHES. TOLERANCES ON: DECIMALS ± .015 ANGLES ± 1°0'	CONTRACT NO DR <i>J. K. Williams</i> 5-3-78 CHK <i>D. S. Heide</i> 11/16/78 APPD <i>A. F. Travis</i> 11/12	AMP INCORPORATED Harrisburg, Pa.	
MATERIAL SEE TABLE	APPD	NAME SOCKET, MATE-N-LOK, TM DUAL LANCE	
FINISH SEE TABLE	DSGN APPD	SIZE B	CODE IDENT NO 00779
	OTHER APPD	SCALE 7	DRAWING NO 350560
			SHEET 1 OF 1

CUSTOMER DRAWING