



Chipsmall Limited consists of a professional team with an average of over 10 year of expertise in the distribution of electronic components. Based in Hongkong, we have already established firm and mutual-benefit business relationships with customers from,Europe,America and south Asia,supplying obsolete and hard-to-find components to meet their specific needs.

With the principle of “Quality Parts,Customers Priority,Honest Operation,and Considerate Service”,our business mainly focus on the distribution of electronic components. Line cards we deal with include Microchip,ALPS,ROHM,Xilinx,Pulse,ON,Everlight and Freescale. Main products comprise IC,Modules,Potentiometer,IC Socket,Relay,Connector.Our parts cover such applications as commercial,industrial, and automotives areas.

We are looking forward to setting up business relationship with you and hope to provide you with the best service and solution. Let us make a better world for our industry!



## Contact us

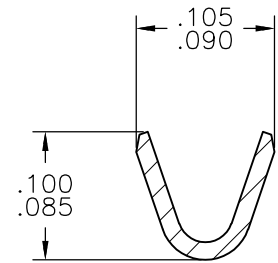
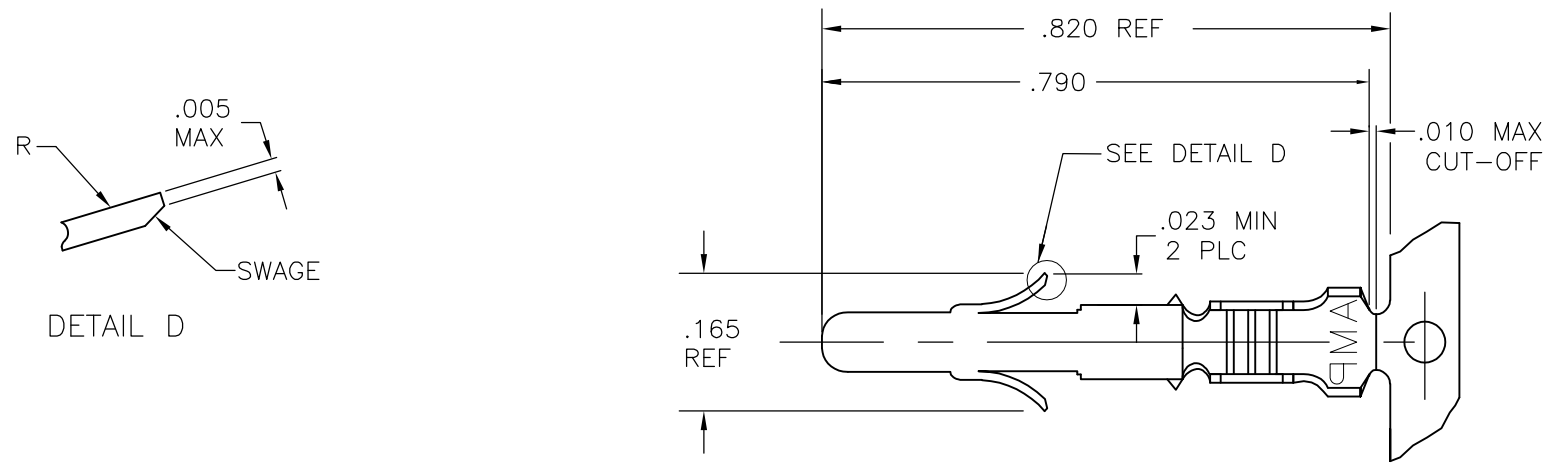
Tel: +86-755-8981 8866 Fax: +86-755-8427 6832

Email & Skype: [info@chipsmall.com](mailto:info@chipsmall.com) Web: [www.chipsmall.com](http://www.chipsmall.com)

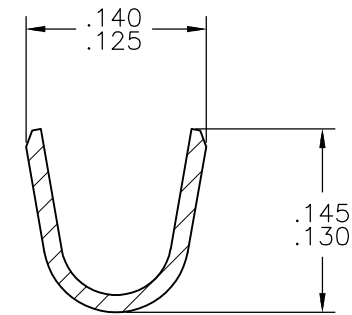
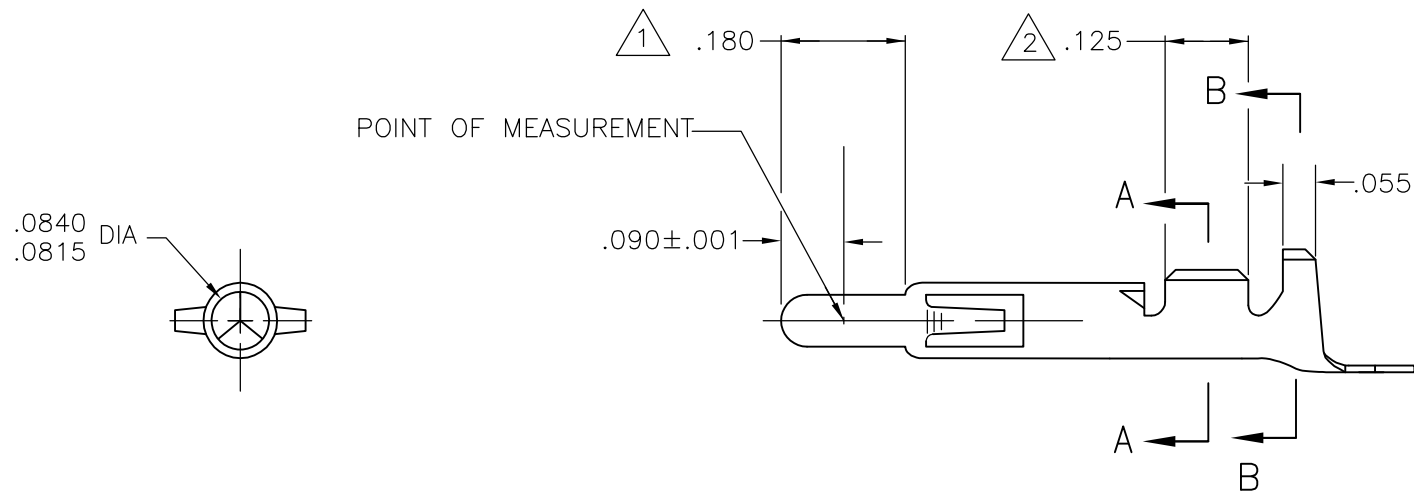
Address: A1208, Overseas Decoration Building, #122 Zhenhua RD., Futian, Shenzhen, China



LOC	DIST	REVISIONS				
		P	LTR	DESCRIPTION	DATE	DWN
CM	00		Z	REVISED PER ECR-12-013323	10AUG2012	KH
			Z1	REVISED PER ECR-14-008840	08JUL2014	AV
						APVD
						TM
						KD



SECTION A-A



SECTION B-B

- 1 PLATED WITH .000030 GOLD, OVER .000050 NICKEL UNDERPLATE.
- 2 PLATED INTERNALLY WITH .000030 GOLD.
- 3 WIRE RANGE: 24-18 AWG AND INSULATION RANGE: .040-.100 DIA.

350690-7	GOLD	1	.012 BRASS	350561-7
350690-3	PRE-TIN		.012 PH. BRZ.	350561-3
350690-2	GOLD	1 2	.012 BRASS	350561-2
350690-1	PRE-TIN			350561-1
LOOSE PIECE (REF)		FINISH		PART NUMBER

THIS DRAWING IS A CONTROLLED DOCUMENT.		DWN M.FEHER 05JUN81	<b>TE</b> TE Connectivity		
		CHK DSH 09JUN81			
DIMENSIONS: INCHES		APVD RPL 10JUN81	NAME		
		PRODUCT SPEC 108-1031	PIN, UNIVERSAL MATE-N-LOK		
		APPLICATION SPEC 114-1010			
MATERIAL -	FINISH -	WEIGHT -	SIZE A2	CAGE CODE 00779	DRAWING NO C=350561
		CUSTOMER DRAWING	SCALE 4:1	SHEET 1 OF 1	REV Z1