



Chipsmall Limited consists of a professional team with an average of over 10 year of expertise in the distribution of electronic components. Based in Hongkong, we have already established firm and mutual-benefit business relationships with customers from,Europe,America and south Asia,supplying obsolete and hard-to-find components to meet their specific needs.

With the principle of "Quality Parts,Customers Priority,Honest Operation,and Considerate Service",our business mainly focus on the distribution of electronic components. Line cards we deal with include Microchip,ALPS,ROHM,Xilinx,Pulse,ON,Everlight and Freescale. Main products comprise IC,Modules,Potentiometer,IC Socket,Relay,Connector.Our parts cover such applications as commercial,industrial, and automotives areas.

We are looking forward to setting up business relationship with you and hope to provide you with the best service and solution. Let us make a better world for our industry!



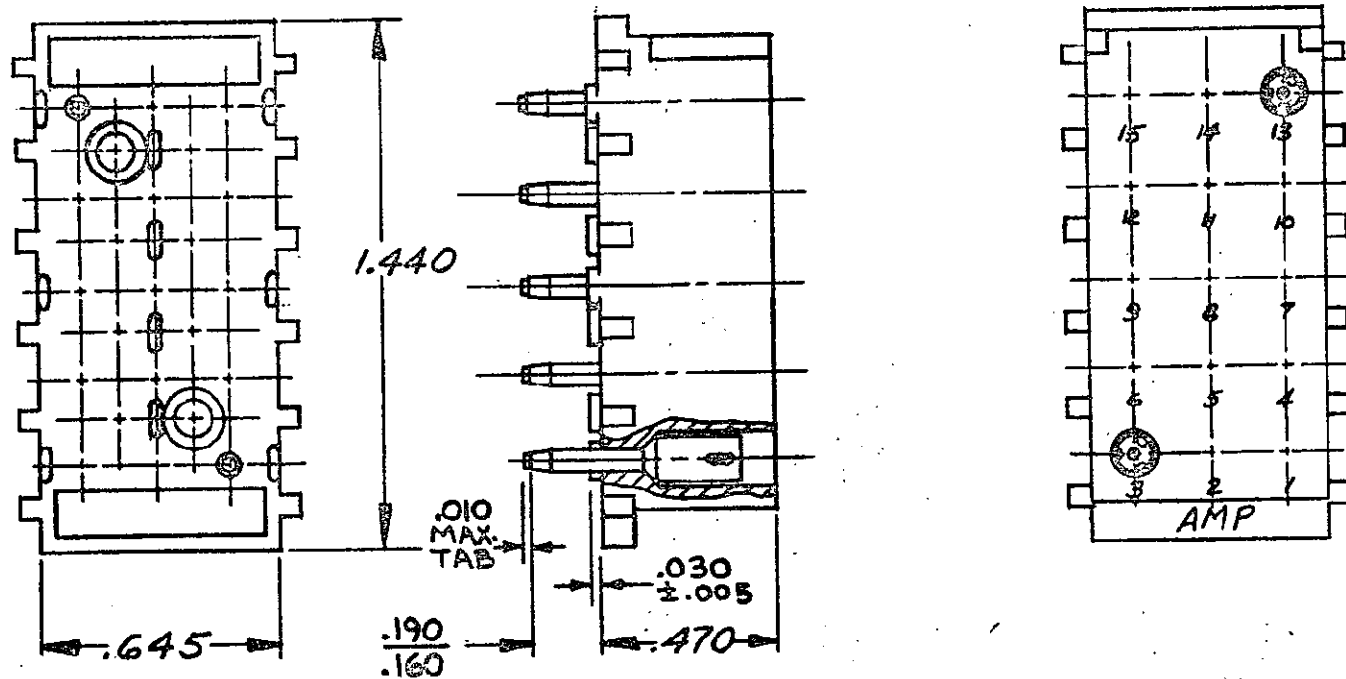
Contact us

Tel: +86-755-8981 8866 Fax: +86-755-8427 6832

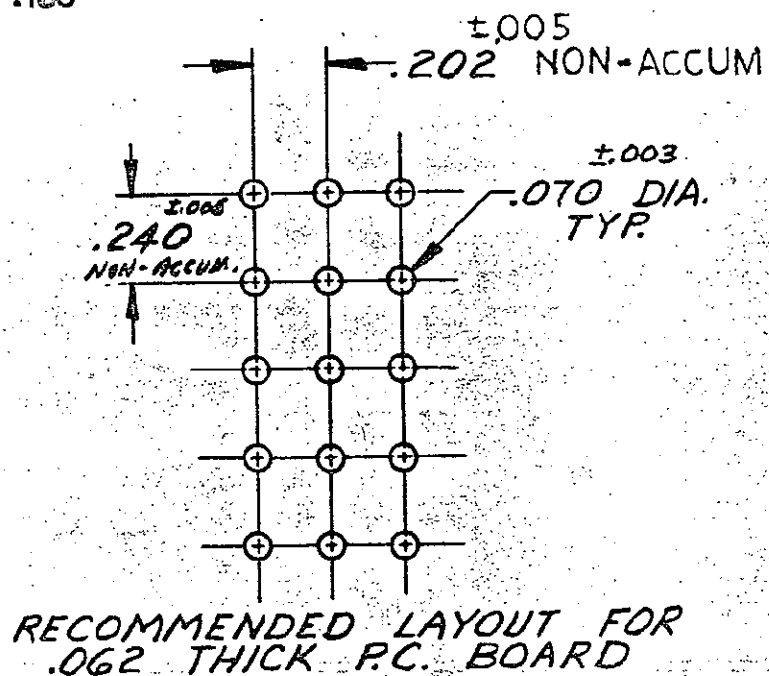
Email & Skype: info@chipsmall.com Web: www.chipsmall.com

Address: A1208, Overseas Decoration Building, #122 Zhenhua RD., Futian, Shenzhen, China





1. MATES WITH HOUSING 480324
2. PARTS COMPLY WITH AMP SOLDERABILITY SPEC. NO. 109-11-3



Unpublished copy not to be reproduced nor published without written permission of AMP Incorporated.

REVISION RECORD	DR	CHK	DATE
J 085-2 PEREC0730-0131-97	JH	RS	4/25/74

350644

REQUIRED PER ASSEMBLY		© 1973 BY AMP INCORPORATED. ALL RIGHTS RESERVED. AMP PRODUCTS COVERED BY PATENTS AND/OR PATENTS PENDING.		CUSTOMER COPY REFERENCE ONLY	
OR 9. Eckman 6-1-73		MATERIAL AND FINISH SEE TABLE		AMP INCORPORATED HARRISBURG, PENNA.	
CHK E. Creamer 4-5-74		WIRE - RANGE - INSULATION # 1 #		CLASS #	
DE G.M. Puffer 4/5/74		TOLERANCE EXCEPT AS NOTED ± .015 ± 1° 0'		TYPE #	
APP C.M. Galloway 4/5/74		NAME 15 CIRCUIT MATE-N-LOK P.C. BOARD SOCKET HEADER		LOC CM B NO 350644 RTV J	
DESCRIPTION					

350644-1	NYLON - NATURAL	PHOS BRZ - PRETIN
ASSEMBLY NO.	HSG. MATL & COLOR	PIN MATL & FINISH

DIMENSIONS IN INCHES. DO NOT SCALE PRINT.

55
E
55