



Chipsmall Limited consists of a professional team with an average of over 10 year of expertise in the distribution of electronic components. Based in Hongkong, we have already established firm and mutual-benefit business relationships with customers from,Europe,America and south Asia,supplying obsolete and hard-to-find components to meet their specific needs.

With the principle of “Quality Parts,Customers Priority,Honest Operation,and Considerate Service”,our business mainly focus on the distribution of electronic components. Line cards we deal with include Microchip,ALPS,ROHM,Xilinx,Pulse,ON,Everlight and Freescale. Main products comprise IC,Modules,Potentiometer,IC Socket,Relay,Connector.Our parts cover such applications as commercial,industrial, and automotives areas.

We are looking forward to setting up business relationship with you and hope to provide you with the best service and solution. Let us make a better world for our industry!



Contact us

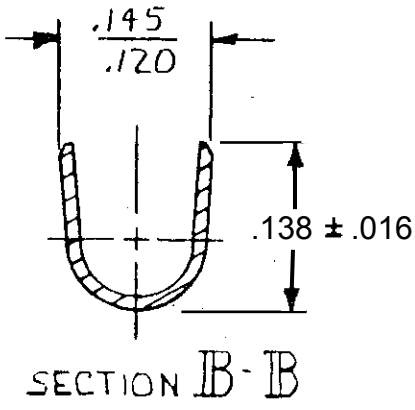
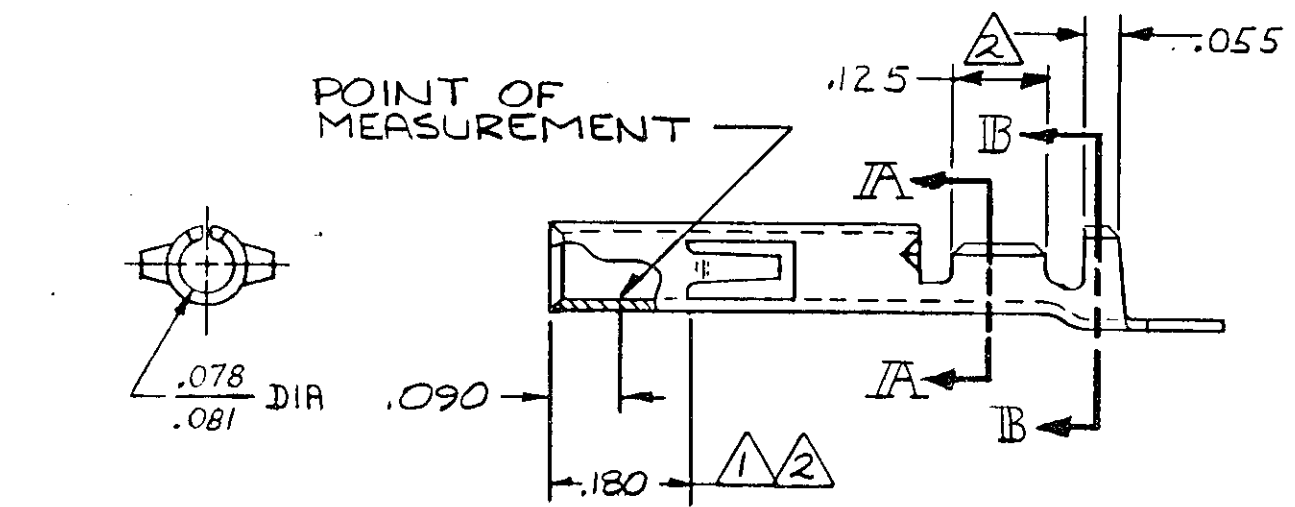
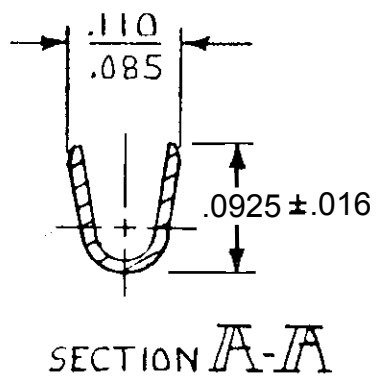
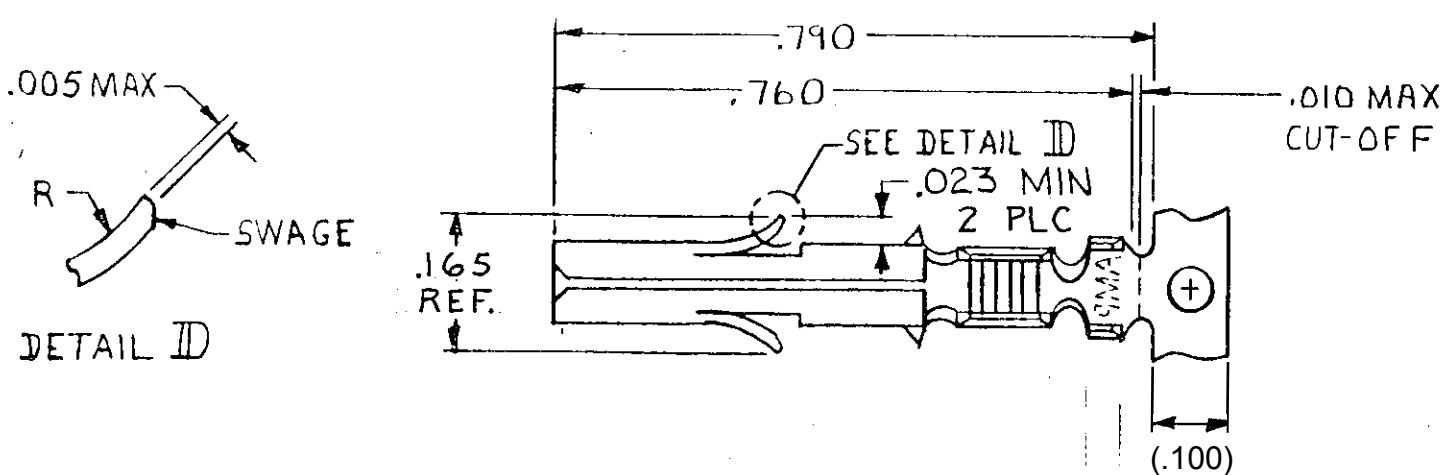
Tel: +86-755-8981 8866 Fax: +86-755-8427 6832

Email & Skype: info@chipsmall.com Web: www.chipsmall.com

Address: A1208, Overseas Decoration Building, #122 Zhenhua RD., Futian, Shenzhen, China



REVISIONS						
P	F	ZONE	LTR	DESCRIPTION	DATE	APVD
			S	REVISED PER ECR-15-013957	28SEP2015	EW



- 1 .000030 THICK GOLD OVER NICKEL ON INSIDE OF RECEPTACLE; REMAINDER OF CONTACT IS NICKEL PLATED.
- 2 .000030 THICK GOLD OVER NICKEL ON INSIDE OF RECEPTACLE AND WIRE BARREL; REMAINDER OF CONTACT IS NICKEL PLATED.
- 3 INSULATION RANGE: .040-.100 DIA.

—	GOLD	1	.012 BRASS	350851-7
—	—	—	—	—
—	—	—	—	—
—	—	—	—	—
640347-2	GOLD	2	.012 BRASS	350851-2
—	PRE-TIN	—	.012 BRASS	350851-1
LOOSE PIECE (REF)	FINISH	MATERIAL	PART NO	

UNLESS OTHERWISE SPECIFIED DIMENSIONS ARE IN INCHES. TOLERANCES ON: DECIMALS ±.015 ANGLES ±	CONTRACT NO DR <i>M. Feher</i> 4-23-81	TE Connectivity	
WIRE RANGE 24-18 AWG	CHK <i>J.S. Weide</i> 6/9/81 APPD <i>R. Polakub</i> 6-10-81		
INSULATION RANGE 3	APPD	NAME SOCKET, UNIVERSAL MATE-N-LOK	
	DSGN APPD	SIZE B	
	OTHER APPD	CODE IDENT NO 00779	
		DRAWING NO 350851	
		SCALE 4-1	
		SHEET	