



Chipsmall Limited consists of a professional team with an average of over 10 year of expertise in the distribution of electronic components. Based in Hongkong, we have already established firm and mutual-benefit business relationships with customers from,Europe,America and south Asia,supplying obsolete and hard-to-find components to meet their specific needs.

With the principle of “Quality Parts,Customers Priority,Honest Operation,and Considerate Service”,our business mainly focus on the distribution of electronic components. Line cards we deal with include Microchip,ALPS,ROHM,Xilinx,Pulse,ON,Everlight and Freescale. Main products comprise IC,Modules,Potentiometer,IC Socket,Relay,Connector.Our parts cover such applications as commercial,industrial, and automotives areas.

We are looking forward to setting up business relationship with you and hope to provide you with the best service and solution. Let us make a better world for our industry!



Contact us

Tel: +86-755-8981 8866 Fax: +86-755-8427 6832

Email & Skype: info@chipsmall.com Web: www.chipsmall.com

Address: A1208, Overseas Decoration Building, #122 Zhenhua RD., Futian, Shenzhen, China



LOC	DIST	REVISIONS					
		P	LTR	DESCRIPTION	DATE	DWN	APVD
CM	0		R2	REVISED PER ECO-11-004587	11MAR11	RK	HMR

- 1

0.00203 [.000080] MIN BRIGHT TIN-LEAD OVER
0.00127 [.000050] MIN NICKEL.
- 2

0.00330 [.000130] MAX PRE-TIN.
- 3

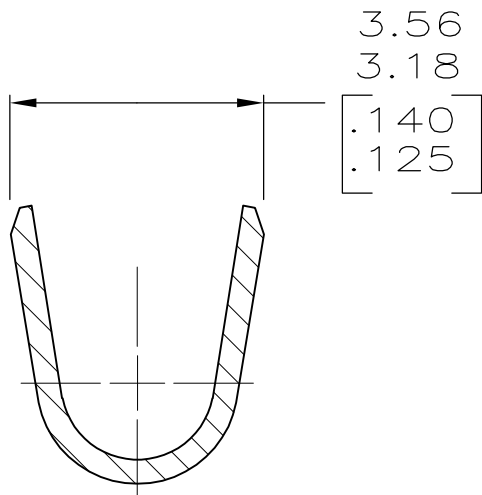
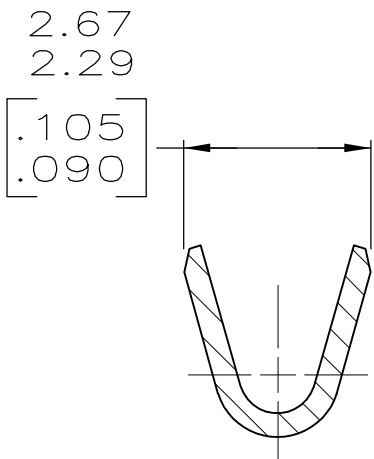
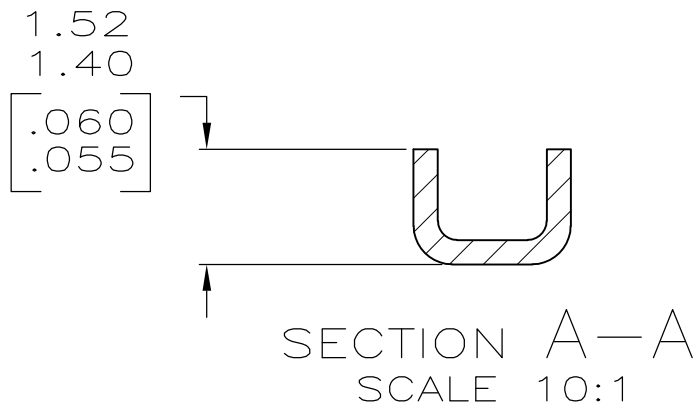
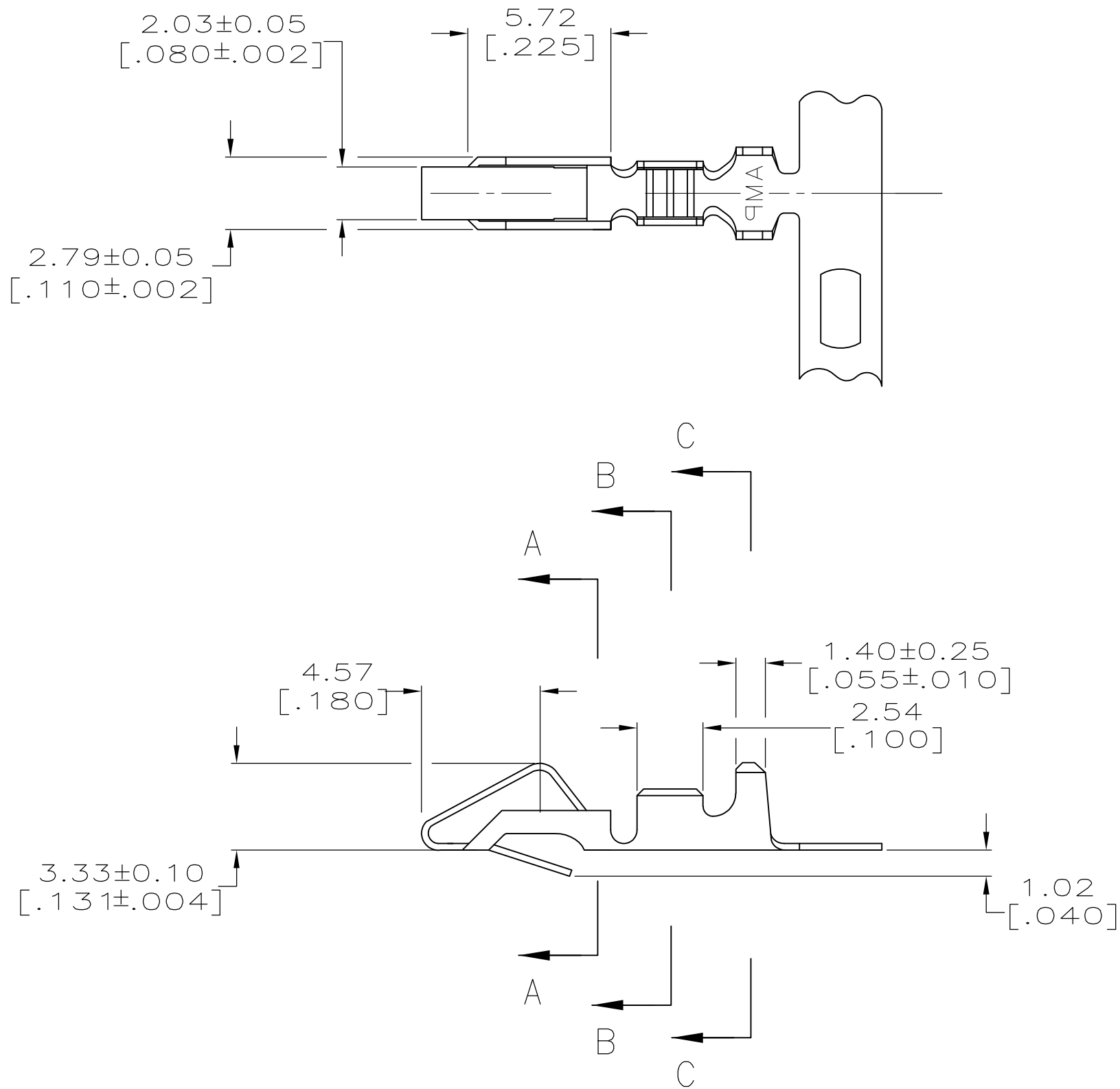
0.00013 [.000005] GOLD OVER 0.00127 [.000050]
MIN NICKEL ALL OVER AND 0.00076 [.000030] MIN
GOLD ON CONTACT AREA.
- 4

WIRE RANGE: 0.2-0.9mm² (24-18 AWG).
INSULATION RANGE: 2.79 [.110] DIA MAX.
- 5

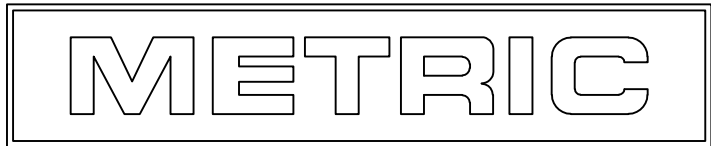
DIMENSIONS IN BRACKETS ARE IN INCHES.
- 6

0.00013 [.000005] GOLD OVER 0.00127 [.000050]
MIN NICKEL ALL OVER AND 0.00038 [.000015] MIN
GOLD ON CONTACT AREA.
- 7

0.00203 [.000080] MIN BRIGHT TIN OVER
0.00127 [.000050] MIN NICKEL.



—	7	3-350980-1
—	6	350980-4
SEE 770258-1	3	350980-3
—	2	350980-2
SEE 640707-1	1	350980-1
LOOSE PIECE	FINISH	PART NO



THIS DRAWING IS A CONTROLLED DOCUMENT.			DWN K. SALMON 11-2-92	TE Connectivity			
DIMENSIONS: INCHES			CHK R. SWING 11-2-92				
			APVD E. BEILES 11-2-92	NAME RECEPTACLE, SL-156			
			PRODUCT SPEC —				
TOLERANCES UNLESS OTHERWISE SPECIFIED:			APPLICATION SPEC —	SIZE A2			
MATERIAL 0.33 [.013] BRASS			WEIGHT —	CAGE CODE 00779	DRAWING NO C-350980	RESTRICTED TO —	
FINISH SEE TABLE			CUSTOMER DRAWING				
			SCALE 5:1	SHEET 1 of 1	REV R2		