



Chipsmall Limited consists of a professional team with an average of over 10 year of expertise in the distribution of electronic components. Based in Hongkong, we have already established firm and mutual-benefit business relationships with customers from,Europe,America and south Asia,supplying obsolete and hard-to-find components to meet their specific needs.

With the principle of “Quality Parts,Customers Priority,Honest Operation,and Considerate Service”,our business mainly focus on the distribution of electronic components. Line cards we deal with include Microchip,ALPS,ROHM,Xilinx,Pulse,ON,Everlight and Freescale. Main products comprise IC,Modules,Potentiometer,IC Socket,Relay,Connector.Our parts cover such applications as commercial,industrial, and automotives areas.

We are looking forward to setting up business relationship with you and hope to provide you with the best service and solution. Let us make a better world for our industry!



## Contact us

Tel: +86-755-8981 8866 Fax: +86-755-8427 6832

Email & Skype: info@chipsmall.com Web: www.chipsmall.com

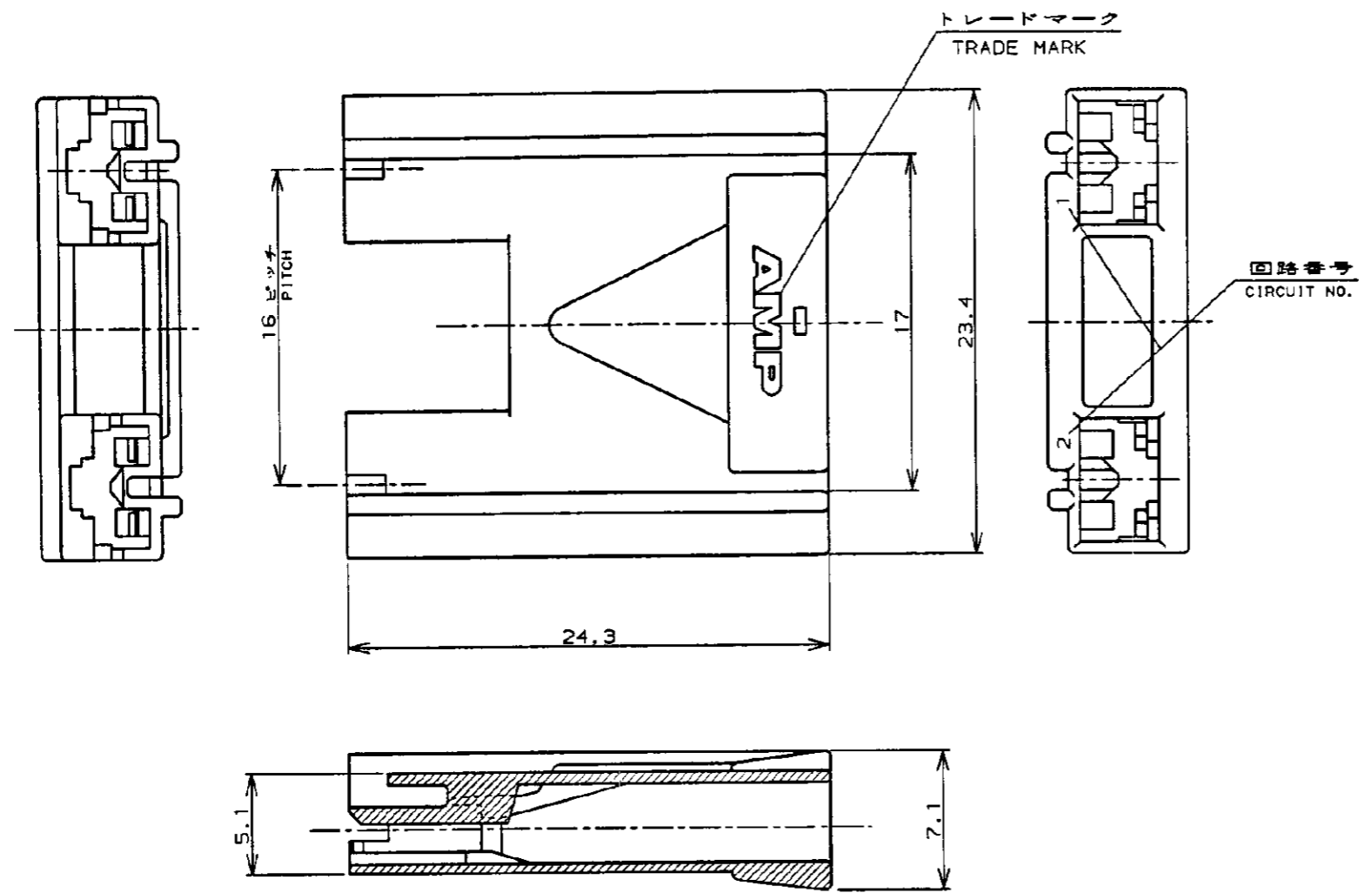
Address: A1208, Overseas Decoration Building, #122 Zhenhua RD., Futian, Shenzhen, China



NUMBER 353148  
METRIC



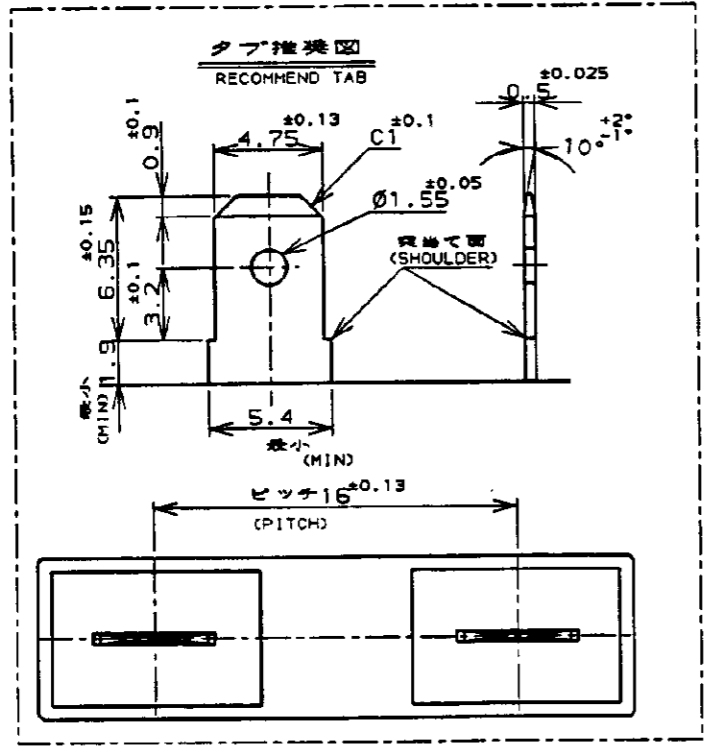
PRINT DIST  
単位: mm DIMENSIONS IN MM. DO NOT SCALE PRINT



注:  
1. 適用製品規格 : 108-5126  
2. 適用端子型番 : 170324, 170325, 170326

NOTES,  
1. PRODUCT SPEC : 108-5126  
2. APPLICABLE CONTACT P/N :  
170324, 170325, 170326

断面 A-A  
SECT.



青 (BLUE)	353148-6
緑 (GREEN)	353148-5
黄 (YELLOW)	353148-4
自然色 (NATURAL)	353148-1
色 (COLOR)	型番 (P/N)

Copyright ©1994年				Copyright ©1994 AMP (Japan), LTD. ALL RIGHTS RESERVED.				Tyco Electronics AMP K.K. Kawasaki, Japan	
配線電線断面積 (WIRE RANGE)				被覆外径 (INSULATION DIA.)		名称 (NAME)			
mm <sup>2</sup> (AWG - )				mmφ		187 シリーズ ポジティブロック (マークII) 2極 リセ ハウジング 16mmピッチ 187 SERIES POSITIVE LOCK (MK-II) 2P 16mm PITCH REC.HSG			
材料 (MATERIAL)				仕上 (FINISH)		一般公差 (GENERAL TOLERANCE)			
6/6ナイロン (94V-0) 6/6NYLON (94V-0)				---		10mm以下 : ±0.2 10mm以上 30mm以下 : ±0.25 30mm以上 100mm以下 : ±0.3 角 度 : ±3°			
DR. M. SUZUKI				DE. M. SUZUKI		LOC		番号 (No.)	
13.MAY '96				13.MAY '96		B J		353148	
CHK. Y. KASHIWA				APP. Y. KASHIWA		尺度 (SCALE)		REV. SHEET	
13.MAY '96				13.MAY '96		---		B 1 OF 1	

AMP-J010-2C  
REV. 3/93

(CUSTOMER DRAWING)