



Chipsmall Limited consists of a professional team with an average of over 10 year of expertise in the distribution of electronic components. Based in Hongkong, we have already established firm and mutual-benefit business relationships with customers from,Europe,America and south Asia,supplying obsolete and hard-to-find components to meet their specific needs.

With the principle of "Quality Parts,Customers Priority,Honest Operation,and Considerate Service",our business mainly focus on the distribution of electronic components. Line cards we deal with include Microchip,ALPS,ROHM,Xilinx,Pulse,ON,Everlight and Freescale. Main products comprise IC,Modules,Potentiometer,IC Socket,Relay,Connector.Our parts cover such applications as commercial,industrial, and automotives areas.

We are looking forward to setting up business relationship with you and hope to provide you with the best service and solution. Let us make a better world for our industry!



Contact us

Tel: +86-755-8981 8866 Fax: +86-755-8427 6832

Email & Skype: info@chipsmall.com Web: www.chipsmall.com

Address: A1208, Overseas Decoration Building, #122 Zhenhua RD., Futian, Shenzhen, China



NUMBER
353454

三角法 (3rd ANGLE PROJECTION)

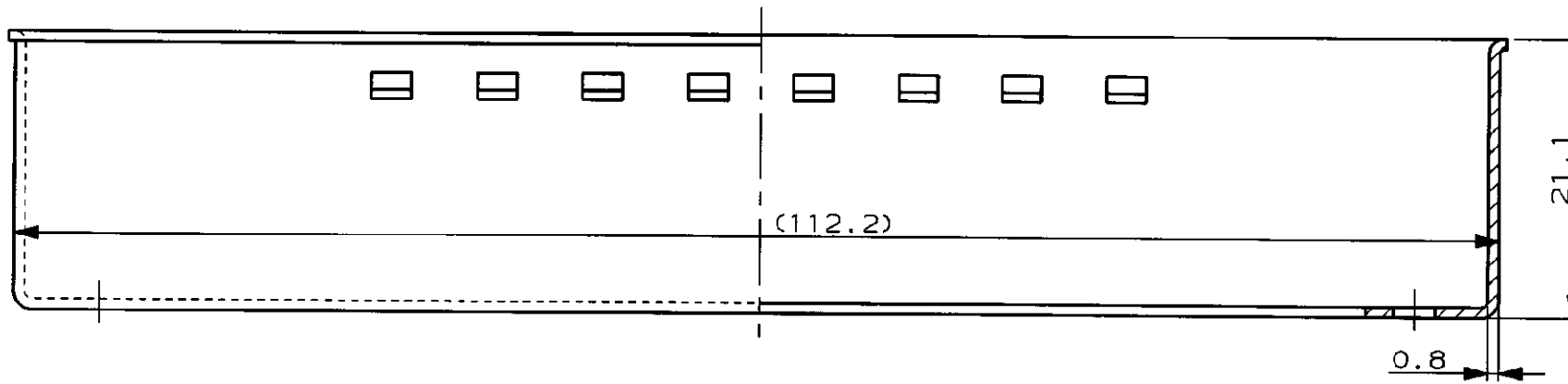
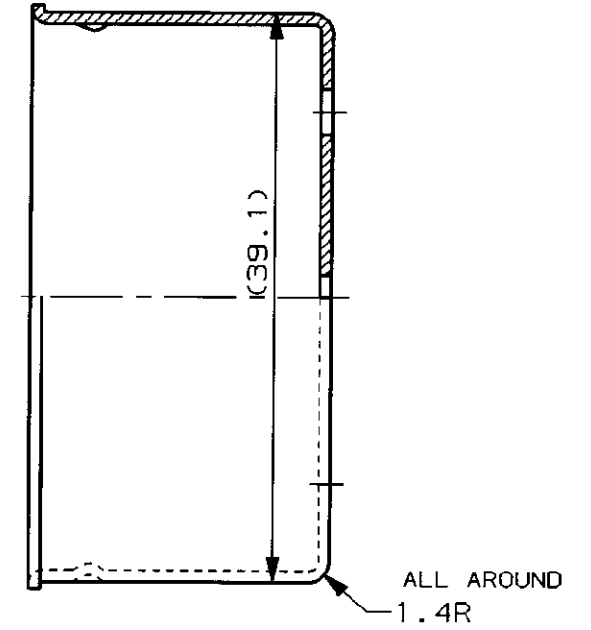
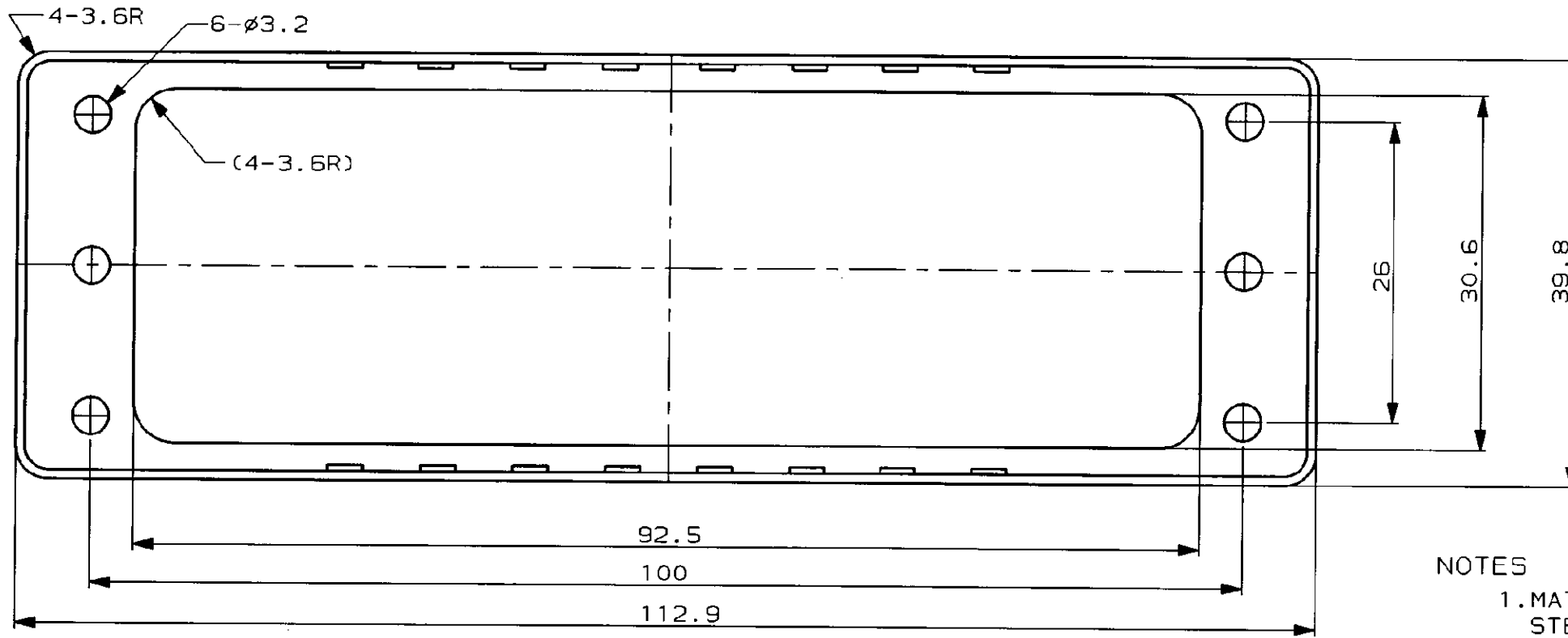
METRIC

単位: mm DIMENSIONS IN MM. DO NOT SCALE PRINT PROJ NO. 396-310

PRINT DIST

AMP-J010-2C
REV. 3/93

-1; AS SHOWN
本 ☒



NOTES

- 1. MATERIAL
STEEL
t=0.8±0.1
- 2. PLATING: Ni PL. 5µMIN
Cu UNDER PL.

注記

- 1. 材料
鋼
t=0.8±0.1
- 2. めっき ; 銅下地の上にニッケルめっき 5µMIN

Copyright ©1996 平 日本エー・エム・ピー株式会社		Copyright ©1996 AMP (Japan) . LTD. ALL RIGHTS RESERVED.		AMP		日本エー・エム・ピー株式会社 Tokyo, Japan	
絶縁電線断面積 (WIRE RANGE) mm ² (AWG -)		絶縁外皮 (INSULATION DIA.) mmφ		名称 (NAME) リセプタクルシェル 260P RECEPTACLE SHELL FOR M-ZIF			
材料 (MATERIAL) -		仕上 (FINISH) SEE NOTES		一般公差 (GENERAL TOLERANCE) 10以下 : ±0.2 10を超え 30以下 : ±0.25 30を超え 100以下 : ±0.3 角 度 : ±3°			
A REVISED FJ00-5821-96 NM Y. I 28/10/96		DR. 8 OCT 96 N. MATSUBARA		DE. 8 OCT 96 N. MATSUBARA		LDC 番号 (No.) B J 353454	
O RELEASED FJ00-5133-96 NM Y. I 10/8/95		CHK. 8 OCT 96 Y. ISHIKAWA		APP. 8 OCT 96 S. MANABE		尺度 (SCALE) REV. SHEET 2/1 A 1 OF 1	
LTR 変更 (REVISION RECORD)		DR		CHK		DATE	

(CUSTOMER DRAWING) 参考 ☒ 面