



Chipsmall Limited consists of a professional team with an average of over 10 year of expertise in the distribution of electronic components. Based in Hongkong, we have already established firm and mutual-benefit business relationships with customers from,Europe,America and south Asia,supplying obsolete and hard-to-find components to meet their specific needs.

With the principle of “Quality Parts,Customers Priority,Honest Operation,and Considerate Service”,our business mainly focus on the distribution of electronic components. Line cards we deal with include Microchip,ALPS,ROHM,Xilinx,Pulse,ON,Everlight and Freescale. Main products comprise IC,Modules,Potentiometer,IC Socket,Relay,Connector.Our parts cover such applications as commercial,industrial, and automotives areas.

We are looking forward to setting up business relationship with you and hope to provide you with the best service and solution. Let us make a better world for our industry!



Contact us

Tel: +86-755-8981 8866 Fax: +86-755-8427 6832

Email & Skype: info@chipsmall.com Web: www.chipsmall.com

Address: A1208, Overseas Decoration Building, #122 Zhenhua RD., Futian, Shenzhen, China



PRINT DIST

単位: 概 DIMENSIONS IN MM. DO NOT SCALE PRINT

METRIC

NUMBER C-353891

三 角 接 (3rd ANGLE PROJECTION)

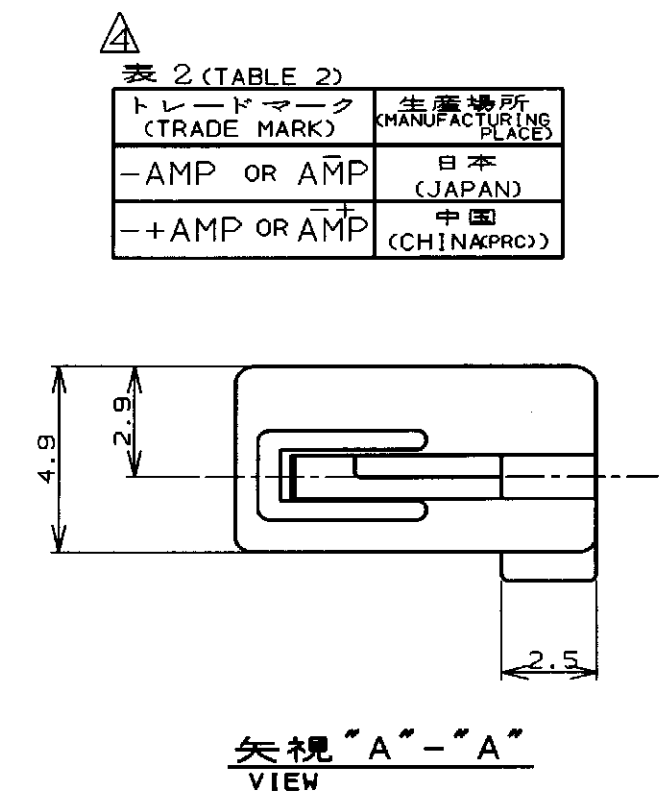
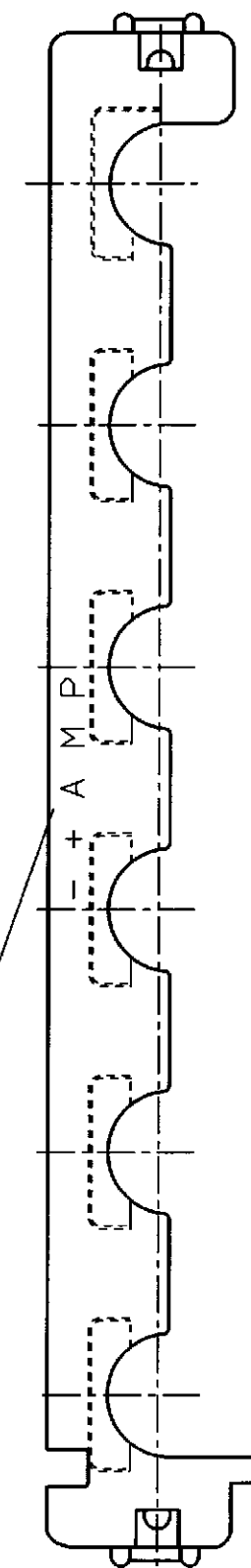
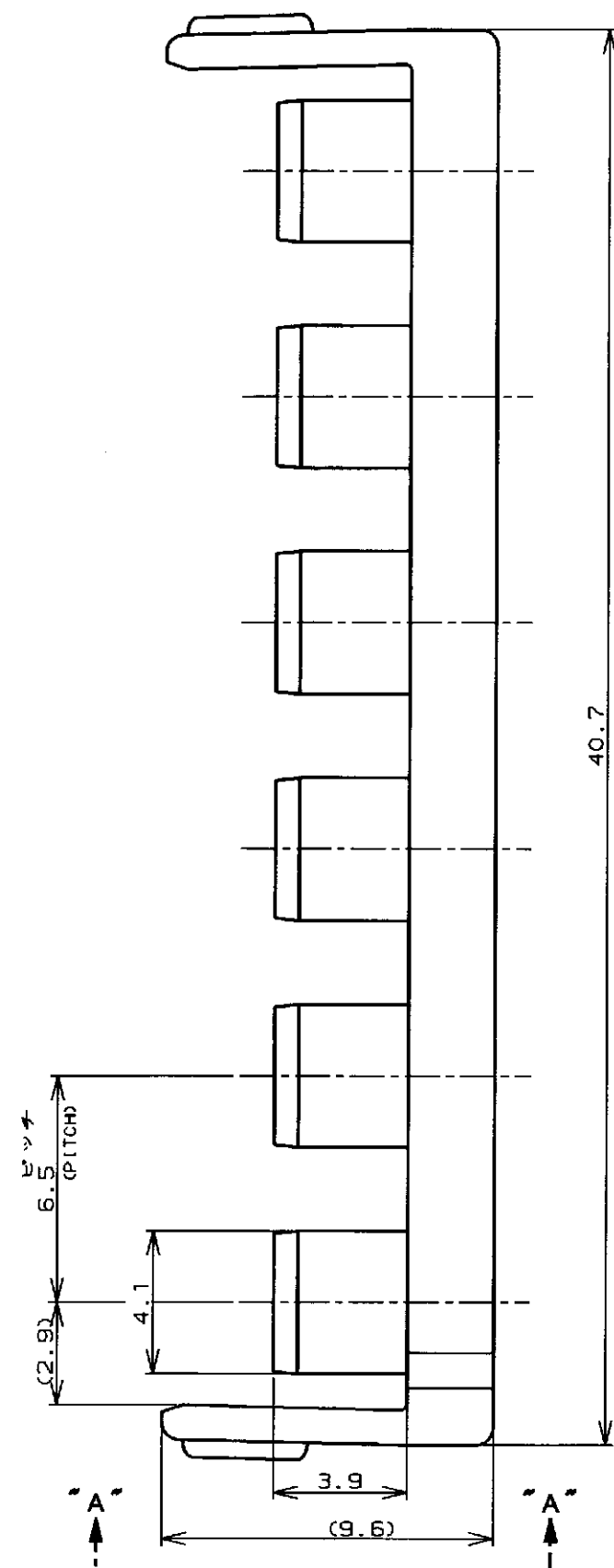
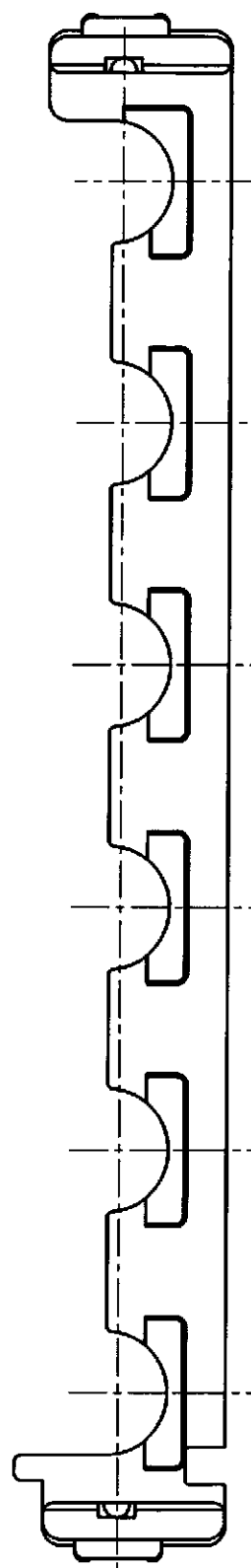


表 2 (TABLE 2)

トレードマーク (TRADE MARK)	生産場所 (MANUFACTURING PLACES)
-AMP OR AMP	日本 (JAPAN)
-+AMP OR AMP	中国 (CHINA(PCR))

表 1
TABLE 1

プラグハウジング (PLUG HOUSING)	12	□-917354-□
適用製品 (APPLICABLE PRODUCT)	極数 (Pos.)	型番 (P/N)

自然色 (NATURAL)	6	353891-1
プレート色調 (PLATE COLOR)	極数 (Pos.)	型番 (P/N)

- 注;
1. 適用製品規格: 108-5410
 2. 適用製品型番: 表1参照
 3. 取扱説明書: 411-5638
- △表2参照
- NOTES;
1. PRODUCT SPEC: 108-5410
 2. APPLICABLE CONN, P/N: SEE FIG.1
 3. INSTRUCTION SHEET: 411-5638
- △SEE TABLE 2

Copyright ©1993年 日本エー・エム・ピー株式会社		Copyright ©1993 AMP (Japan), LTD. ALL RIGHTS RESERVED.		AMP		日本エー・エム・ピー株式会社 Kawasaki, Japan	
組合電線断面積 (WIRE RANGE) —H— mm ² (AWG -)		被覆外径 (INSULATION DIA.) 1.3 - 2.8 mmφ		名称 (NAME) アンブ パワー ダブルロック コネクタ 6極 6.5mmピッチ ダブルロック プレート AMP POWER DOUBLE LOCK CONN. 6.5mm PITCH DBL LOCK PLATE 6Pos			
材料 (MATERIAL) 6/6 ナイロン (UL94V-0) 6/6 NYLON GLASS FILLED (UL94V-0)		仕上 (FINISH) —H—		一般公差 (GENERAL TOLERANCE) 10以下: ±0.2 10を超え 30以下: ±0.25 30を超え 100以下: ±0.3 角 度: ±3°			
A 変更 FJ00-0953-98	DR. N. YAMASAKI	4. APR. '97	DE. N. YAMASAKI	4. APR. '97	LOC A3 J	番号 (No.) C-353891	
O RELEASED FJ00-0473-97	DR. M. SHINDO	4. APR. '97	APP. M. SHINDO	4. APR. '97	尺度 (SCALE)	REV. A	SHEET 1 OF 1
LTR 変更 (REVISION RECORD)	DR	CHK	DATE				