



Chipsmall Limited consists of a professional team with an average of over 10 year of expertise in the distribution of electronic components. Based in Hongkong, we have already established firm and mutual-benefit business relationships with customers from,Europe,America and south Asia,supplying obsolete and hard-to-find components to meet their specific needs.

With the principle of “Quality Parts,Customers Priority,Honest Operation,and Considerate Service”,our business mainly focus on the distribution of electronic components. Line cards we deal with include Microchip,ALPS,ROHM,Xilinx,Pulse,ON,Everlight and Freescale. Main products comprise IC,Modules,Potentiometer,IC Socket,Relay,Connector.Our parts cover such applications as commercial,industrial, and automotives areas.

We are looking forward to setting up business relationship with you and hope to provide you with the best service and solution. Let us make a better world for our industry!



## Contact us

Tel: +86-755-8981 8866 Fax: +86-755-8427 6832

Email & Skype: info@chipsmall.com Web: www.chipsmall.com

Address: A1208, Overseas Decoration Building, #122 Zhenhua RD., Futian, Shenzhen, China



# Fume Diverter Installation, Operation and Maintenance



Made in the  
United States of America



Figure 1. Menda [35463](#) Fume Diverter

## Description

The Menda [35463](#) Fume Diverter is a heavy duty, light weight smoke diverter. The unit is specifically designed to divert or redirect soldering smoke away from the operator's face, thereby making the soldering process safer and more comfortable. The quiet, high volume fan and replaceable carbon filter capture much of the smoke and airborne particulate passing through it. The unit's compact size makes it perfect for densely populated workstations.

The Fume Diverter has a North American power cord and is constructed of powder coated heavy gauge steel for durability and long life. The secondary benefit is that the enclosure is ESD protected and corrosion proof. This makes the unit suitable and convenient for benchtop and field service applications.

Additional features include an illuminated power switch, replaceable filters and a magnetic diverter attachment.

The Fume Diverter and its accessories are available as the following item numbers:

Item	Description
<a href="#">35463</a>	Fume Diverter, 120VAC
<a href="#">35464</a>	Diverter Attachment
<a href="#">35465</a>	Replacement Carbon Filter

## Packaging

- 1 Fume Diverter, 120VAC
- 1 Diverter Attachment
- 4 Rubber Feet

## Features and Components

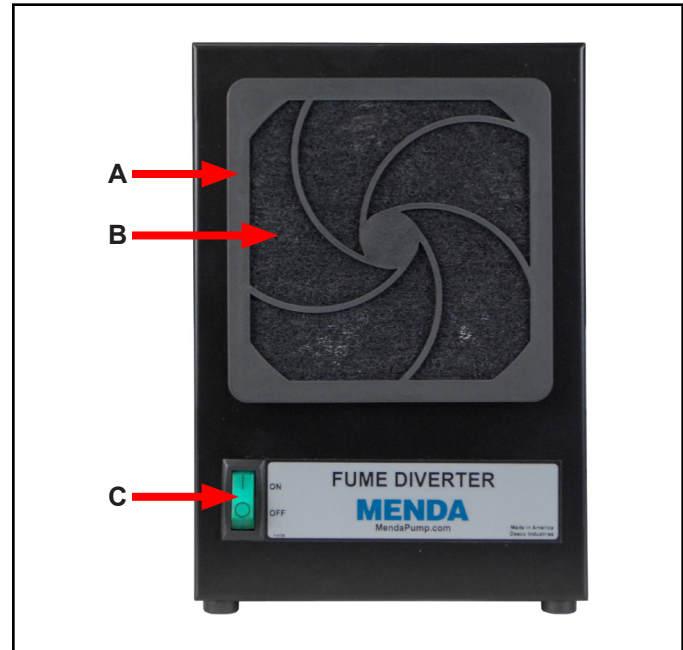


Figure 2. Fume Diverter features and components

**A. Filter Retainer:** Detach the filter retainer from the Fume Diverter to gain access to the carbon filter.

**B. Carbon Filter:** The carbon filter is the only user serviceable part. Replace the filter once it becomes too dirty for use. See the Maintenance section for more information.

**C. Power Switch:** Toggle to the ON position to power the Fume Diverter. The switch will remain illuminated when the Fume Diverter is in use.

## Installation

Place the Fume Diverter at a desired location where the airflow will not be restricted. The unit may be placed upright or on its left side. 4 rubber feet with adhesive backing are included if the Fume Diverter is to be placed on its side.

Attach the magnetic diverter attachment to the back of the unit. Orient the attachment so the fan's exhaust will not be directed to a nearby operator.

Ensure that the power switch is in the OFF position. Plug the power cord into the appropriate AC power source.



Figure 3. Laying the Fume Diverter on its side

An additional [35464](#) Diverter Attachment may be installed to the face of the Fume Diverter to optimize fume extraction from a particular area.



Figure 4. Installing an additional [35464](#) Fume Diverter

## Operation

1. Place the front of the Fume Diverter as close to the fume source as possible without it interfering with the user's operation.
2. Make sure the exhaust side of the unit is free from obstruction, and use the diverter attachment to direct the fumes away from personnel.
3. Toggle the power switch to the ON position. The Fume Diverter is now ready to extract smoke and particulate away from the operator.

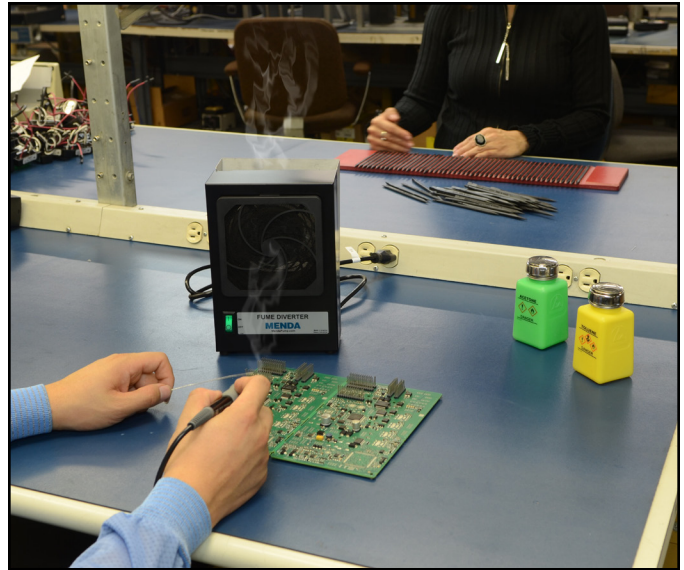


Figure 5. Using the Fume Diverter

## Maintenance

The carbon filter on the intake side of the Fume Diverter is the only user serviceable part. To replace the filter, toggle the power switch to the OFF position, and unplug the unit from its electrical outlet. Unsnap the plastic holder from the unit, dispose the soiled filter, install a [35465](#) Replacement Carbon Filter and remount the plastic holder. The longevity of the filter will depend on how often the Fume Diverter is used and the cleanliness of its environment. A good rule of thumb is to replace it whenever it looks dirty.

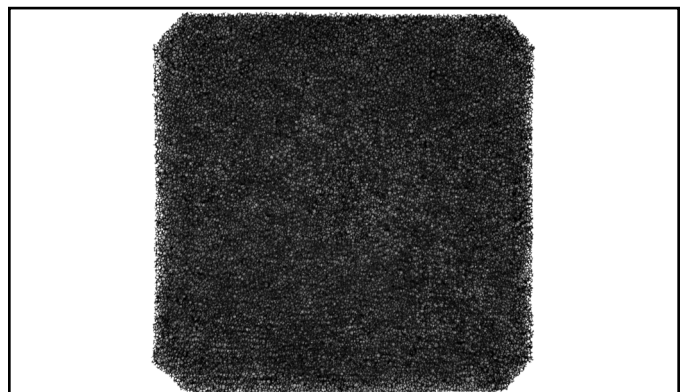


Figure 6. Menda [35465](#) Replacement Carbon Filter

## Specifications

### Air Flow

One speed fan (105 CFM)

### Chassis

Powder coated steel

### Dimensions

8.5" x 6.0" x 2.6"  
(22 cm x 15 cm x 7 cm)

### Input Power

AC line power  
100/120 VAC - 50/60Hz  
North American plug

### Weight

3.6 lbs (1.6 kg)

### Limited Warranty, Warranty Exclusions, Limit of Liability and RMA Request Instructions

See the Menda warranty -

<http://menda.descoindustries.com/warranty.aspx>