



Chipsmall Limited consists of a professional team with an average of over 10 year of expertise in the distribution of electronic components. Based in Hongkong, we have already established firm and mutual-benefit business relationships with customers from,Europe,America and south Asia,supplying obsolete and hard-to-find components to meet their specific needs.

With the principle of “Quality Parts,Customers Priority,Honest Operation,and Considerate Service”,our business mainly focus on the distribution of electronic components. Line cards we deal with include Microchip,ALPS,ROHM,Xilinx,Pulse,ON,Everlight and Freescale. Main products comprise IC,Modules,Potentiometer,IC Socket,Relay,Connector.Our parts cover such applications as commercial,industrial, and automotives areas.

We are looking forward to setting up business relationship with you and hope to provide you with the best service and solution. Let us make a better world for our industry!



## Contact us

Tel: +86-755-8981 8866 Fax: +86-755-8427 6832

Email & Skype: info@chipsmall.com Web: www.chipsmall.com

Address: A1208, Overseas Decoration Building, #122 Zhenhua RD., Futian, Shenzhen, China



Part Number: 3570 1419 Series  
 Instrumentation Grade Mini SIP - 1 Form A **15 Watt**  
 Product Data Sheet

## PICTURE



## FEATURES

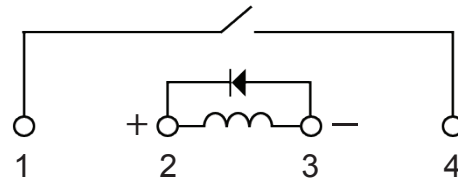
- High Reliability Instrumentation Grade reed switch with sputtered Ruthenium contacts.
- 15 W Mini SIP (40% smaller than 3570-1333 series)
- Magnetic shield-reduces interaction (option).
- Coil suppression diode protects coil drive circuits (option).
- High Insulation Resistance: 10<sup>12</sup> Ω MIN
- High board density.
- Molded thermoset industry standard package.
- Hermetically sealed contacts for long life.
- UL File E358613

RoHS Compliant

## ORDERING INFORMATION

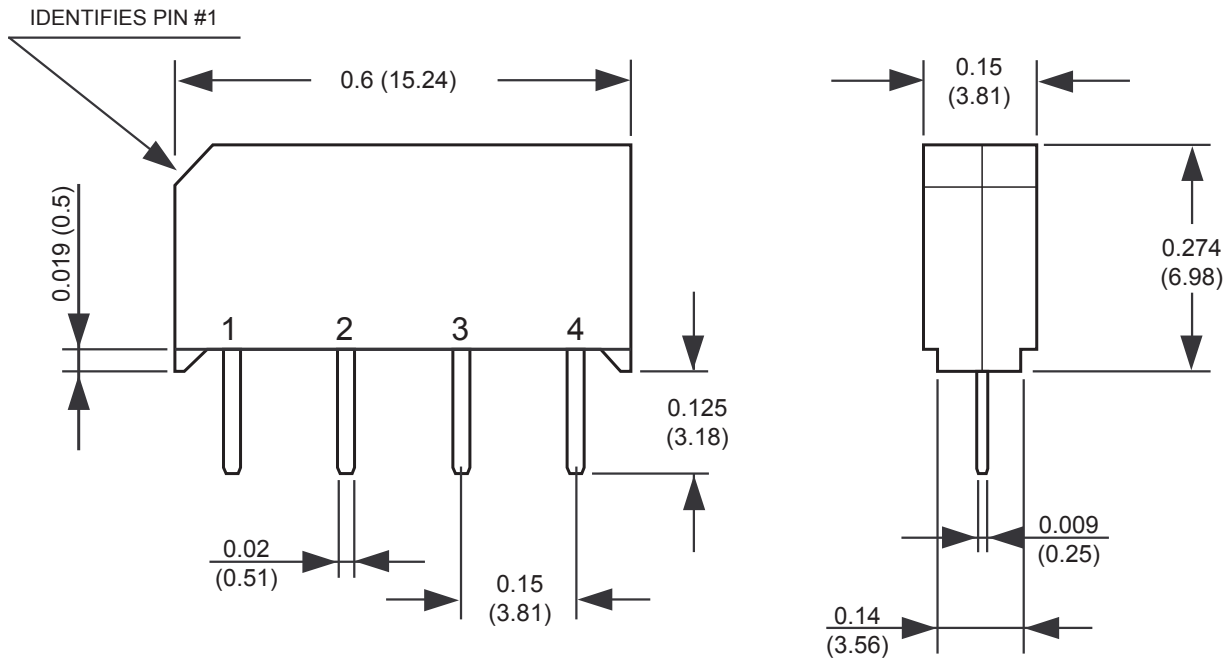
Series	Coil	Options
3570.1419.	05	1 = no diode
	12	2 = internal magnetic shield
		3 = with diode
		4 = internal magnetic shield + diode

## SCHEMATIC



Part Number Example: 3570.1419.xxx  
 3570.1419.051 = 5 volt coil, no diode

## DIMENSIONS



Drawings not to scale.  
 All dimensions in inches (mm) nominal.

As part of the company policy of continued product improvement, specifications may change without notice. Our sales office will be pleased to help you with the latest information on this product range and the details of our full design and manufacturing service. All products are supplied to our standard conditions of sale unless otherwise agreed in writing.

Phone: (1) 973 777 6900

www.comus-intl.com

Fax: (1) 973 777 8405

Belgium: + 32 (0)12 390400 - Comus Europe Ltd (Assemtech) UK: +44 (0) 1255 862236 - Germany: +49 (0)911 923 15 943 - Netherlands: +31(0)45 54 39 345 - India: +(91) (44) 43219090  
 ©2015 Copyright Comus International, 454 Allwood Road, Clifton NJ 07012, USA

Part Number: 3570 1419 Series  
 Instrumentation Grade Mini SIP - 1 Form A **15 Watt**  
 Product Data Sheet

**COIL DATA-STANDARD TYPE 1 FORM A (at 20 °C)**

NOMINAL VOLTAGE DC±10%[V]	COIL RESISTANCE ±10% (Ω)	MAX OPERATE VOLTAGE (VDC)	MIN RELEASE VOLTAGE (VDC)	MAX COIL VOLTAGE (VDC)
5	500	3.75	0.4	7
12	1000	9.0	1.0	16

**CONTACT RATING**

Max Switching Power	15 W
Max Switching Voltage	200 VDC
Max Switching Current	1 A
Max Carry Current	1.25 A

**SPECIFICATION**

Contact Resistance (Initial)	MAX 150 mΩ
Operate Time - including bounce (Typical)	0.35 ms (At Nominal Voltage)
Release Time (Typical)	0.1 ms
Insulation Resistance @ 100V, 20°C, 40% RH (MIN)	10 <sup>12</sup> Ω
Dielectric Strength (MIN)	Between Open Contacts 200 V DC / peak AC Between Coil to Contacts 1500 V DC / peak AC
Capacitance Between Open Contacts (Typical)	0.7 pF
Vibration	20G
Shock Resistance	50G
Operating Temperature	-40° +85°C
Storage Temperature	-40° +100°C
Life Expectancy of Electrical	1000 x10 <sup>6</sup> ops (1 VDC, 10mA)

As part of the company policy of continued product improvement, specifications may change without notice. Our sales office will be pleased to help you with the latest information on this product range and the details of our full design and manufacturing service. All products are supplied to our standard conditions of sale unless otherwise agreed in writing.

**Phone: (1) 973 777 6900**      **www.comus-intl.com**      **Fax: (1) 973 777 8405**

Belgium: + 32 (0)12 390400 - Comus Europe Ltd (Assemtch) UK: +44 (0) 1255 862236 - Germany: +49 (0)911 923 15 943 - Netherlands: +31(0)45 54 39 345 - India: +(91) (44) 43219090

©2015 Copyright Comus International, 454 Allwood Road, Clifton NJ 07012, USA