



Chipsmall Limited consists of a professional team with an average of over 10 year of expertise in the distribution of electronic components. Based in Hongkong, we have already established firm and mutual-benefit business relationships with customers from,Europe,America and south Asia,supplying obsolete and hard-to-find components to meet their specific needs.

With the principle of “Quality Parts,Customers Priority,Honest Operation,and Considerate Service”,our business mainly focus on the distribution of electronic components. Line cards we deal with include Microchip,ALPS,ROHM,Xilinx,Pulse,ON,Everlight and Freescale. Main products comprise IC,Modules,Potentiometer,IC Socket,Relay,Connector.Our parts cover such applications as commercial,industrial, and automotives areas.

We are looking forward to setting up business relationship with you and hope to provide you with the best service and solution. Let us make a better world for our industry!



## Contact us

Tel: +86-755-8981 8866 Fax: +86-755-8427 6832

Email & Skype: info@chipsmall.com Web: www.chipsmall.com

Address: A1208, Overseas Decoration Building, #122 Zhenhua RD., Futian, Shenzhen, China





SKU# 3570

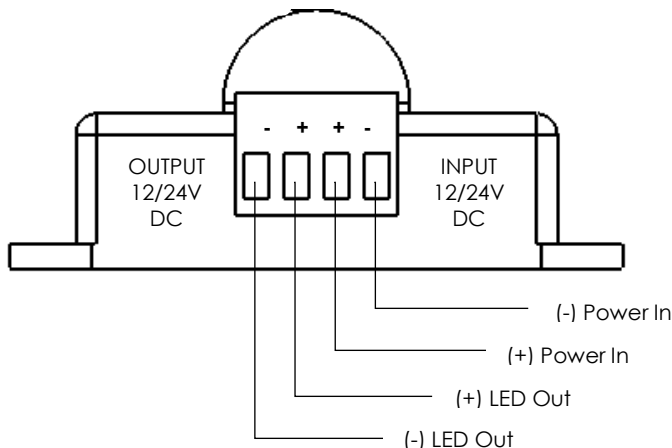
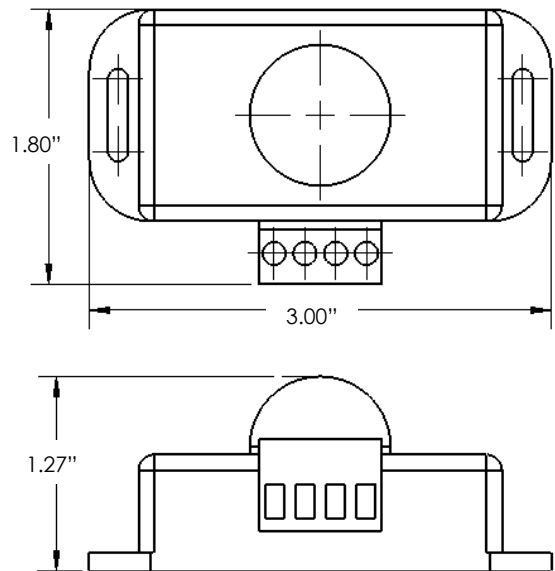
**Product Features:**

- Low profile design fits easily in small spaces
- Adjustable time of delay for auto-off function
- Compatible with Inspired LED products
- Easy screw mount install

**Specifications:**

- Net Weight- 32 grams
- Max Load- 6 AMPs
- Sensor Range- 8 meters
- Working Temperature- (-20°) to (60°) C
- 12-24VDC screw terminal input/output

**Works with plug-in power supplies only!**



**Instructions:**

1. Secure LED lights in place according to their instructions
2. Strip ends of wire leading to LED lights  
*Note for Inspired LED Cables: white lettering indicates (+) side of wire*
3. Match (+) and (-) polarity of wires to polarity of output screw terminals
4. Loosen output screw connections, insert wires, tighten screws to secure in place
5. Strip ends of wire leading to power source, match (+) and (-) polarity of wires to polarity of input screw terminal
6. Loosen input screw connections, insert wires, tighten screws to secure in place
7. Connect power source to test motion sensor
8. To adjust time of delay, insert screw driver into control dial located on the back of the device. Turn clockwise to increase length of time lights remain on, turn counterclockwise to decrease the time lights remain on before auto-off.