



Chipsmall Limited consists of a professional team with an average of over 10 year of expertise in the distribution of electronic components. Based in Hongkong, we have already established firm and mutual-benefit business relationships with customers from,Europe,America and south Asia,supplying obsolete and hard-to-find components to meet their specific needs.

With the principle of “Quality Parts,Customers Priority,Honest Operation,and Considerate Service”,our business mainly focus on the distribution of electronic components. Line cards we deal with include Microchip,ALPS,ROHM,Xilinx,Pulse,ON,Everlight and Freescale. Main products comprise IC,Modules,Potentiometer,IC Socket,Relay,Connector.Our parts cover such applications as commercial,industrial, and automotives areas.

We are looking forward to setting up business relationship with you and hope to provide you with the best service and solution. Let us make a better world for our industry!



Contact us

Tel: +86-755-8981 8866 Fax: +86-755-8427 6832

Email & Skype: info@chipsmall.com Web: www.chipsmall.com

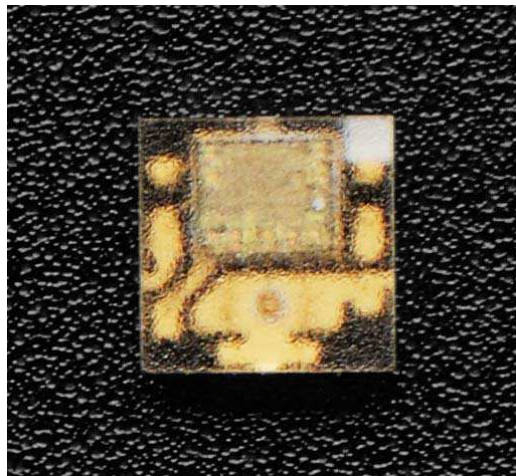
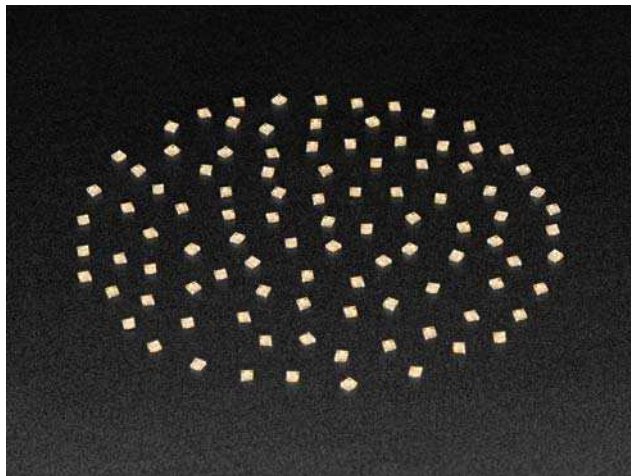
Address: A1208, Overseas Decoration Building, #122 Zhenhua RD., Futian, Shenzhen, China





DotStar Micro LEDs (APA102-2020)– Smart SMD RGB LED – 100 pack

PRODUCT ID: 3587



Description

These *incredibly small* surface-mount LEDs are an easy way to add a lot of very tiny (but bright!) colorful dots to your project. They're mini versions of our digital DotStar strips and matrices with full chainable 2-wire control. They are just mind-bogglingly small. They are a mere 2mm x 2mm (way smaller than APA102-5050-RGB), which makes them pretty darn bitty, so they might be a little cumbersome to hand solder. SMT techniques with solder paste and hot air will work best here.

There are three LEDs inside, red, green, and blue. The RGB LEDs are controlled by a tiny chip that takes a 24-bit color level via the clock and data in and then does all the PWM control for you. So you just 'set' the color data once. Like DotStars (and the similar NeoPixels) you can chain them together, the output of one leading into the input of another for near-infinitely long strips.

Comes in a strip of 100 pieces. Also available in a 10 pack!

Please note this is a surface-mount part! It is possible to solder thin wires to the pads, but it's designed for use on a SMD PCB. If you are not comfortable with hand soldering SMD parts, check out our other RGB LEDs such as the thru-hole ones or in pixels/strips.

Technical Details

- Red color: 620-625 nm
- Green color: 520-525 nm
- Blue color: 465-470 nm
- Red brightness @ ~20mA: 600-800 mcd
- Blue brightness @ ~20mA: 800-1000 mcd
- Green brightness @ ~20mA: 1500-2000mcd
- Datasheet <http://www.led-color.com/upload/201604/APA102-2020%20SMD%20LED.pdf>

Product Dimensions: 2.0mm x 2.0mm x 0.9mm / 0.1" x 0.1" x 0.0"

