



Chipsmall Limited consists of a professional team with an average of over 10 year of expertise in the distribution of electronic components. Based in Hongkong, we have already established firm and mutual-benefit business relationships with customers from,Europe,America and south Asia,supplying obsolete and hard-to-find components to meet their specific needs.

With the principle of “Quality Parts,Customers Priority,Honest Operation,and Considerate Service”,our business mainly focus on the distribution of electronic components. Line cards we deal with include Microchip,ALPS,ROHM,Xilinx,Pulse,ON,Everlight and Freescale. Main products comprise IC,Modules,Potentiometer,IC Socket,Relay,Connector.Our parts cover such applications as commercial,industrial, and automotives areas.

We are looking forward to setting up business relationship with you and hope to provide you with the best service and solution. Let us make a better world for our industry!



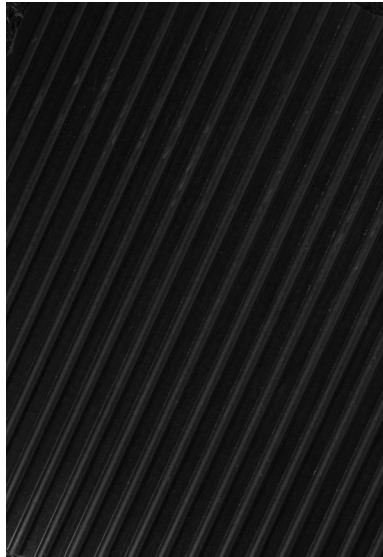
Contact us

Tel: +86-755-8981 8866 Fax: +86-755-8427 6832

Email & Skype: info@chipsmall.com Web: www.chipsmall.com

Address: A1208, Overseas Decoration Building, #122 Zhenhua RD., Futian, Shenzhen, China





Corrugated Embossed Pattern



Diamond Embossed Pattern

- Designed to insulate employees working on or in the vicinity of high voltage equipment by interrupting the electrical path to ground.
- Typical applications include power boards, electrical rooms, transformer stations, switching gear, bucket floors, mines, subways or any other high voltage workplace.
- Made in the United States of America



High Voltage

Application	Insulative	Test Method
Embossing	Corrugated or Diamond	Face
	Cloth	Back
Thickness	1/4" (.250")	
Polymer	PVC	
Type	Type II, Class 2	ASTM D178-01
Color	Black	
Physical Properties		
Tensile	800 PSI	ASTM D412
Elongation	150%	ASTM D412
Flame Resistance	0.50" max after 30 seconds	ASTM D178-01
Surface Wear Resistance	Good	Taber, H-18 wheel/500 gr./1000 rev.
Dimensional Stability/Layflat	Very Good	ASTM D1204
Electrical Properties		
Dielectric Test Voltage	30,000 VAC	ASTM D178-01
Proof Tested Over Entire Surface	20,000 VAC	ASTM D178-01
Recommended Max. Use VAC	17,000 VAC	ASTM D178-01
Weathering		
Ozone Resistance	Pass	ASTM D178-01

Item	Pattern	Size
35880	Corrugated	24" x 75'
35881	Corrugated	30" x 75'
35882	Corrugated	36" x 75'
35883	Corrugated	48" x 75'
35887	Diamond	36" x 75'
35889	Diamond	48" x 75'

Unless otherwise noted, specified tolerance is +/- 10%
Specifications and procedures subject to change without notice.



Made in the United States of America

Switchboard Insulative Matting

3651 WALNUT AVE., CHINO, CA 91710
PHONE: (909) 627-2453
WEBSITE: MendaPump.com

DRAWING NUMBER
35880

DATE:
July
2016

MENDA