



Chipsmall Limited consists of a professional team with an average of over 10 year of expertise in the distribution of electronic components. Based in Hongkong, we have already established firm and mutual-benefit business relationships with customers from,Europe,America and south Asia,supplying obsolete and hard-to-find components to meet their specific needs.

With the principle of "Quality Parts,Customers Priority,Honest Operation,and Considerate Service",our business mainly focus on the distribution of electronic components. Line cards we deal with include Microchip,ALPS,ROHM,Xilinx,Pulse,ON,Everlight and Freescale. Main products comprise IC,Modules,Potentiometer,IC Socket,Relay,Connector.Our parts cover such applications as commercial,industrial, and automotives areas.

We are looking forward to setting up business relationship with you and hope to provide you with the best service and solution. Let us make a better world for our industry!



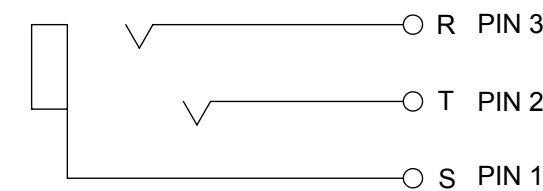
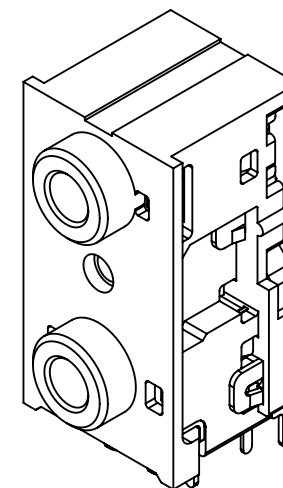
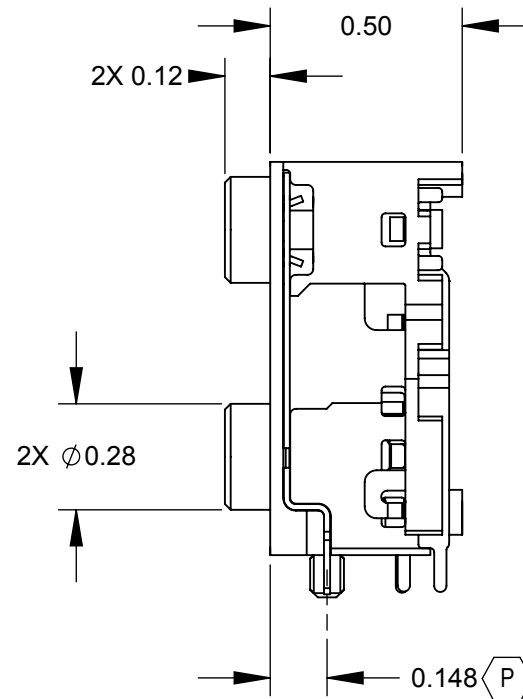
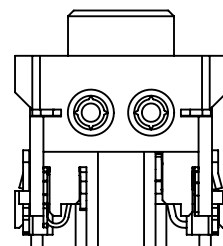
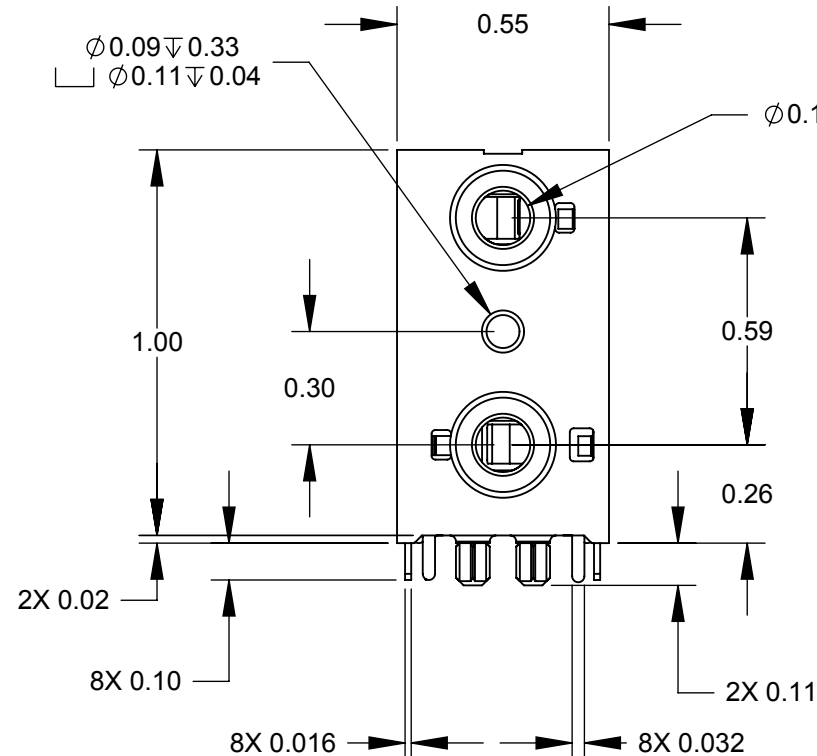
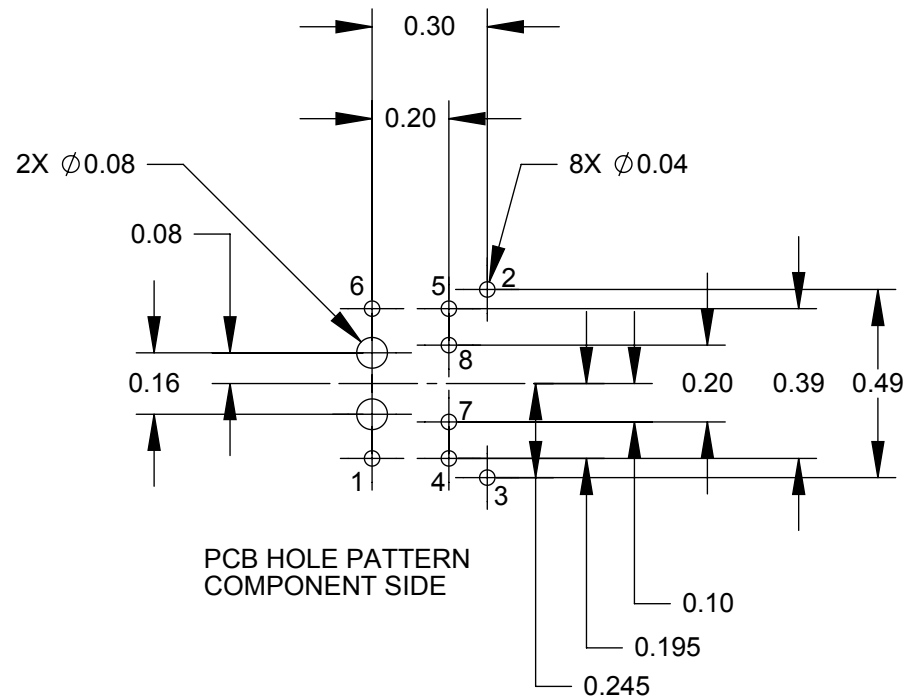
Contact us

Tel: +86-755-8981 8866 Fax: +86-755-8427 6832

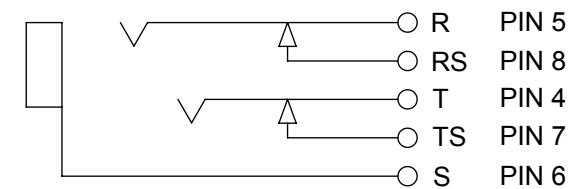
Email & Skype: info@chipsmall.com Web: www.chipsmall.com

Address: A1208, Overseas Decoration Building, #122 Zhenhua RD., Futian, Shenzhen, China





TOP JACK SCHEMATIC



BOTTOM JACK SCHEMATIC

PERFORMANCE SPECIFICATIONS

INSERTION/EXTRACTION FORCES: INITIAL 0.8 TO 6 POUNDS.
DIELECTRIC WITHSTANDING VOLTAGE: 500 VAC
INSULATION RESISTANCE: INITIAL 100 MEGOHMS MINIMUM
CONTACT RESISTANCE PLUG TO JACK: 50 MILLIOHMS MAXIMUM
CONTACT RESISTANCE SHUNTS TO SPRINGS: 30 MILLIOHMS MAXIMUM
MECHANICAL LIFE: 5000 CYCLES MINIMUM

MATERIALS

SPRINGS AND TERMINALS: SILVER PLATED COPPER ALLOY
HOUSING: LCP

NOTES:

1. THIS PRODUCT IS RoHS COMPLIANT.
2. ALL DIMENSIONS REFERENCE ONLY.

CUSTOMER DRAWING

					<div>UNLESS OTHERWISE SPECIFIED</div> <div>1. ALL DIMENSIONS IN INCHES</div> <div>- TWO PLACE DECIMALS ±0.02</div> <div>- THREE PLACE DECIMALS ±0.005</div>	THIS DRAWING DESCRIBES A DESIGN CONSIDERED PROPRIETARY IN NATURE, DEVELOPED AND MANUFACTURED BY SWITCHCRAFT INC. AND IS RELEASED ON A CONFIDENTIAL BASIS FOR IDENTIFICATION PURPOSES ONLY.											
						SIZE	WIDTH		MULT		LBS/M		TEMPER				
						FINISH SPEC No.						MATERIAL SPEC No.					
						FIRST USED ON				SCALE 2:1		Switchcraft®					
P	26432	08-28-09	JEB	TJK		DATE DRAWN	BY	CHKD	APVD								
N	ECO 21834 REDRAWN	05-28-97	BDS	BDS		080709	BDS	BDS	BDS								
								080709	080709		SHEET 1 OF 1						
REV	ECO NUMBER	DATE	BY	APVD		NAME						PART No.		REV			
REVISIONS						DO NOT SCALE DRAWING					3.5 MM DUAL JACK, RoHS				35RAPC7J		P