



Chipsmall Limited consists of a professional team with an average of over 10 year of expertise in the distribution of electronic components. Based in Hongkong, we have already established firm and mutual-benefit business relationships with customers from,Europe,America and south Asia,supplying obsolete and hard-to-find components to meet their specific needs.

With the principle of “Quality Parts,Customers Priority,Honest Operation,and Considerate Service”,our business mainly focus on the distribution of electronic components. Line cards we deal with include Microchip,ALPS,ROHM,Xilinx,Pulse,ON,Everlight and Freescale. Main products comprise IC,Modules,Potentiometer,IC Socket,Relay,Connector.Our parts cover such applications as commercial,industrial, and automotives areas.

We are looking forward to setting up business relationship with you and hope to provide you with the best service and solution. Let us make a better world for our industry!



## Contact us

Tel: +86-755-8981 8866 Fax: +86-755-8427 6832

Email & Skype: info@chipsmall.com Web: www.chipsmall.com

Address: A1208, Overseas Decoration Building, #122 Zhenhua RD., Futian, Shenzhen, China



# Data Sheet

## 360273

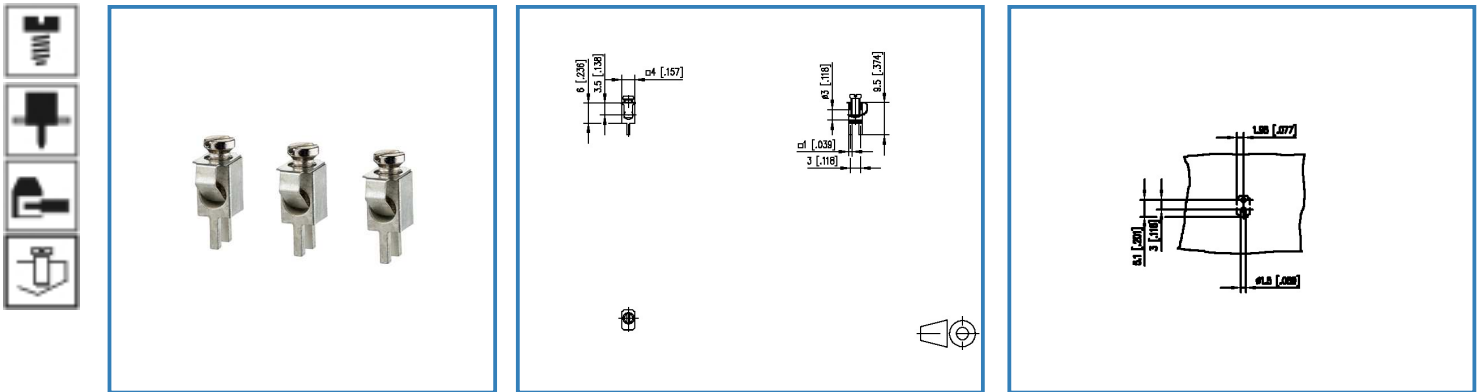
Page 1/4

P/N

360273

2017/08/28

### Illustration



see enlarged drawing at the end of the document

### Product specification

- screw type terminal block, solderable, double solder pins
- direction of connection 90°
- wire protector
- color metallike
- open construction, screw brought down by hand (transport safety)

© 2017 METZ CONNECT - Technische Änderungen vorbehalten! Subject to modifications! Sous réserve de modifications techniques!



# Data Sheet

## 360273

Page 2/4

P/N

360273

2017/08/28

### Technical Data

#### General Data

Tightening torque SEV	0.5 Nm
Tightening torque UL	3.5 lb-in
Solder pin length	3.5 mm
min. number of poles	1
max. number of poles	1

#### Connection data

Rated wiring solid wire	0.13 - 2 mm <sup>2</sup> / AWG 26 - 14
Rated wiring stranded wire	0.13 - 1.5 mm <sup>2</sup> / AWG 26 - 14

#### Approvals

 A / AWG	15 / 26 - 14
---	--------------

#### Material

terminal body material	CuZn
terminal body surface	Ni + Sn
screw surface	Zn Cr(VI)-frei/free
wire protector material	CuSn
wire protector surface	Sn
screw thread	M2.6

#### General

solderability	Acc. to JEDEC JESD22-B102E 245°C/5s
Tolerance	ISO 2768 -mH



**Data Sheet  
360273**

Page 3/4

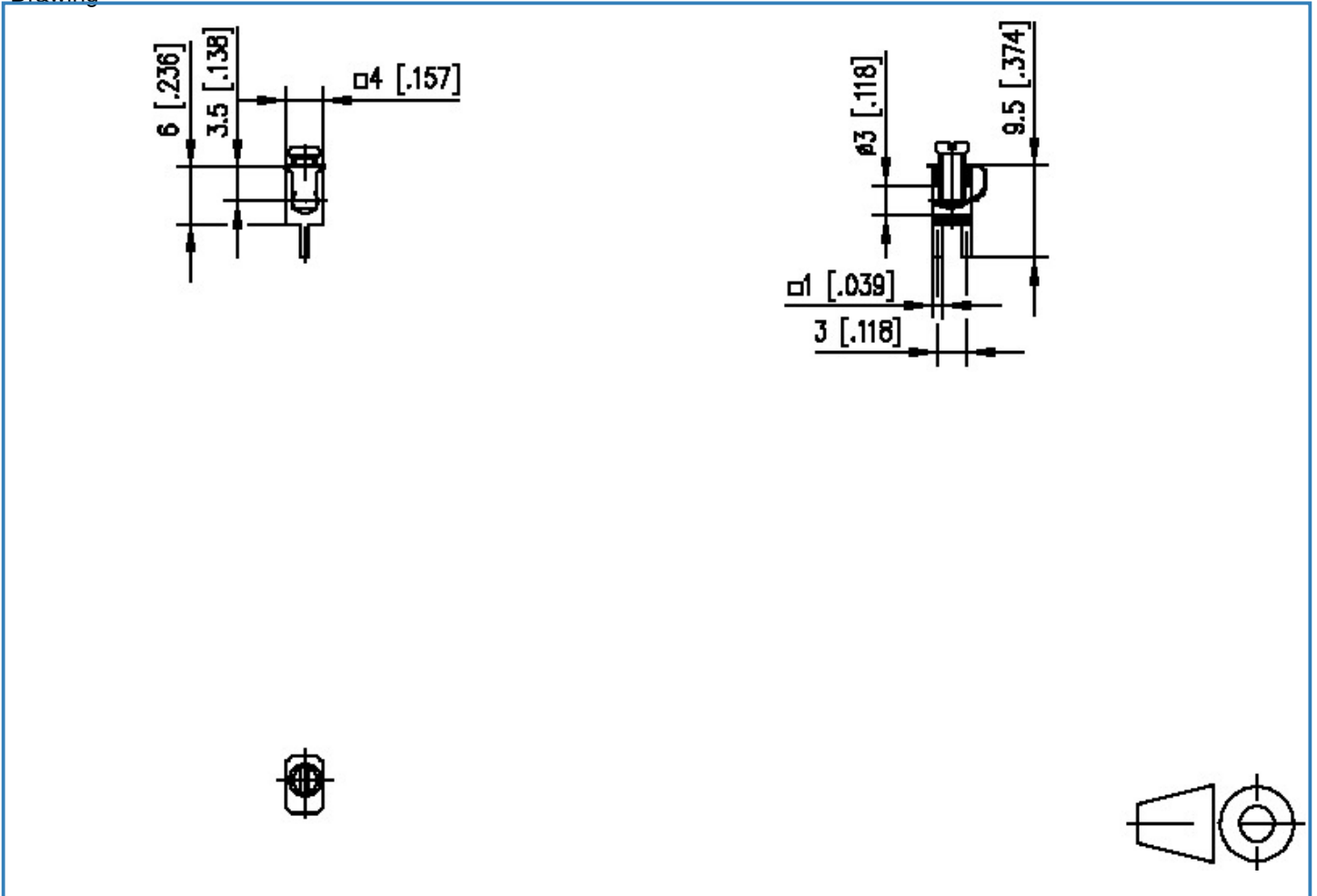
P/N

360273

2017/08/28

**Illustration**

Drawing



© 2017 METZ CONNECT - Technische Änderungen vorbehalten! Subject to modifications! Sous réserve de modifications techniques!

# Data Sheet

## 360273

Page 4/4

P/N

360273

2017/08/28

PCB Layout

