

Chipsmall Limited consists of a professional team with an average of over 10 year of expertise in the distribution of electronic components. Based in Hongkong, we have already established firm and mutual-benefit business relationships with customers from,Europe,America and south Asia,supplying obsolete and hard-to-find components to meet their specific needs.

With the principle of “Quality Parts,Customers Priority,Honest Operation,and Considerate Service”,our business mainly focus on the distribution of electronic components. Line cards we deal with include Microchip,ALPS,ROHM,Xilinx,Pulse,ON,Everlight and Freescale. Main products comprise IC,Modules,Potentiometer,IC Socket,Relay,Connector.Our parts cover such applications as commercial,industrial, and automotives areas.

We are looking forward to setting up business relationship with you and hope to provide you with the best service and solution. Let us make a better world for our industry!



## Contact us

Tel: +86-755-8981 8866 Fax: +86-755-8427 6832

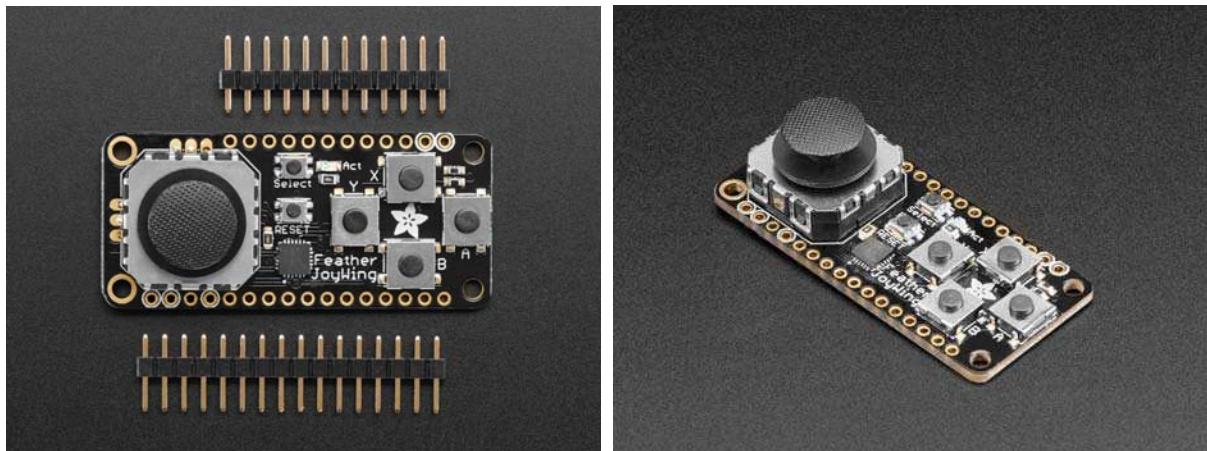
Email & Skype: [info@chipsmall.com](mailto:info@chipsmall.com) Web: [www.chipsmall.com](http://www.chipsmall.com)

Address: A1208, Overseas Decoration Building, #122 Zhenhua RD., Futian, Shenzhen, China



# Adafruit Joy FeatherWing for all Feathers

PRODUCT ID: 3632



## Description

Make a game or robotic controller with this Joy-ful FeatherWing. This FeatherWing has a 2-axis joystick and 5 momentary buttons (4 large and 1 small) so you can turn your feather board into a tiny game controller. This wing communicates with your host microcontroller over I2C so it's easy to use and doesn't take up any of your precious analog or digital pins. There is also an optional interrupt pin that can alert your feather when a button has been pressed or released to free up processor time for other tasks.

This FeatherWing features Adafruit Seesaw technology - a custom programmed little helper microcontroller that takes the two analog inputs from the joystick, and 5 button inputs, and converts it into a pretty I2C interface. This I2C interface means you don't 'lose' any GPIO or analog inputs when using this 'Wing, and it works with any and all Feathers! You can easily stack this with any other FeatherWing because I2C is a shared bus. If you have an I2C address conflict, or you want to connect more than one of these to a Feather, there are two address-select jumpers so you have 4 options of I2C addresses

There's an optional IRQ (interrupt) line that you can use if you'd like the Wing to let you know when a button has been pressed. Since its optional (and most Feathers are perfectly happy polling the Wing for data) we left a bunch of solder jumpers so you can select what pin has the IRQ on it. Or just leave it disconnected!

We have an Adafruit Seesaw library for Arduino, Python and CircuitPython so you can get started with the Joy FeatherWing in a jiffy.

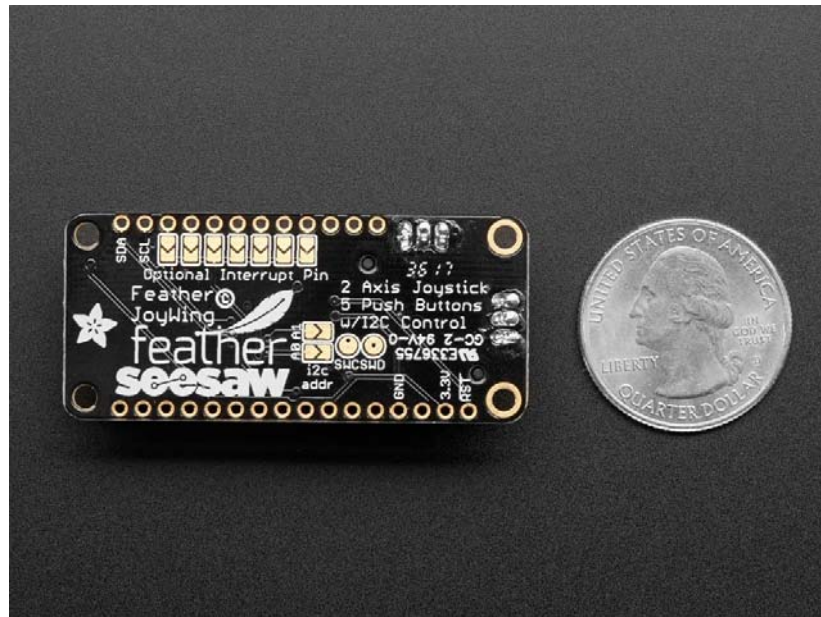
Comes with one assembled and programmed Wing, and two pieces of 0.1" header. Some soldering is required to attach the headers to the FeatherWing.

## Technical Details

Uses I2C address 0x49 - can be changed to 0x4A, 0x4B or 0x4C

Product Dimensions: 50.0mm x 23.0mm x 14.5mm / 2.0" x 0.9" x 0.6"

Product Weight: 7.3g / 0.3oz



<https://www.adafruit.com/product/3632> 10-17-17