



Chipsmall Limited consists of a professional team with an average of over 10 year of expertise in the distribution of electronic components. Based in Hongkong, we have already established firm and mutual-benefit business relationships with customers from,Europe,America and south Asia,supplying obsolete and hard-to-find components to meet their specific needs.

With the principle of “Quality Parts,Customers Priority,Honest Operation,and Considerate Service”,our business mainly focus on the distribution of electronic components. Line cards we deal with include Microchip,ALPS,ROHM,Xilinx,Pulse,ON,Everlight and Freescale. Main products comprise IC,Modules,Potentiometer,IC Socket,Relay,Connector.Our parts cover such applications as commercial,industrial, and automotives areas.

We are looking forward to setting up business relationship with you and hope to provide you with the best service and solution. Let us make a better world for our industry!



## Contact us

Tel: +86-755-8981 8866 Fax: +86-755-8427 6832

Email & Skype: info@chipsmall.com Web: www.chipsmall.com

Address: A1208, Overseas Decoration Building, #122 Zhenhua RD., Futian, Shenzhen, China



THIS DRAWING IS UNPUBLISHED.  
PLANO NO PUBLICADO

RELEASED FOR PUBLICATION  
LIBRE DE SER PUBLICADO

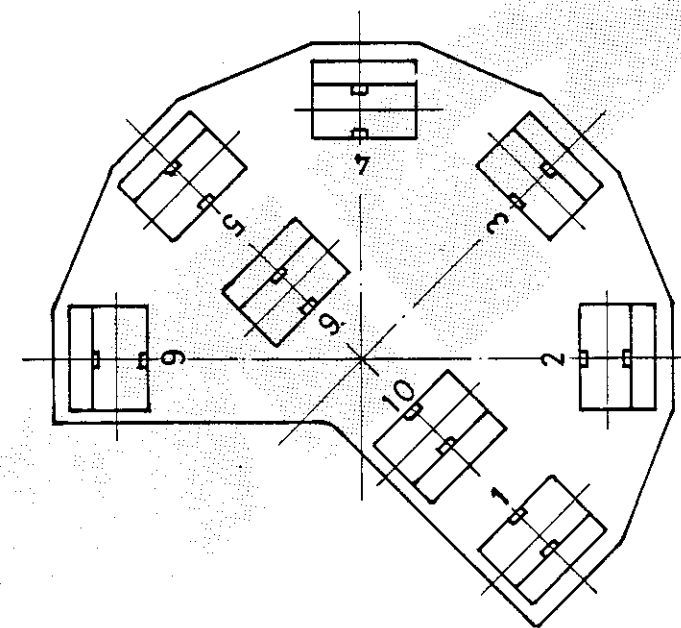
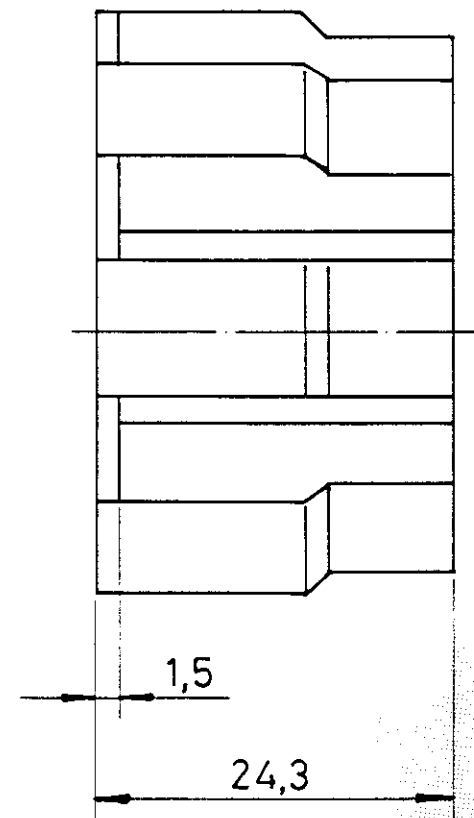
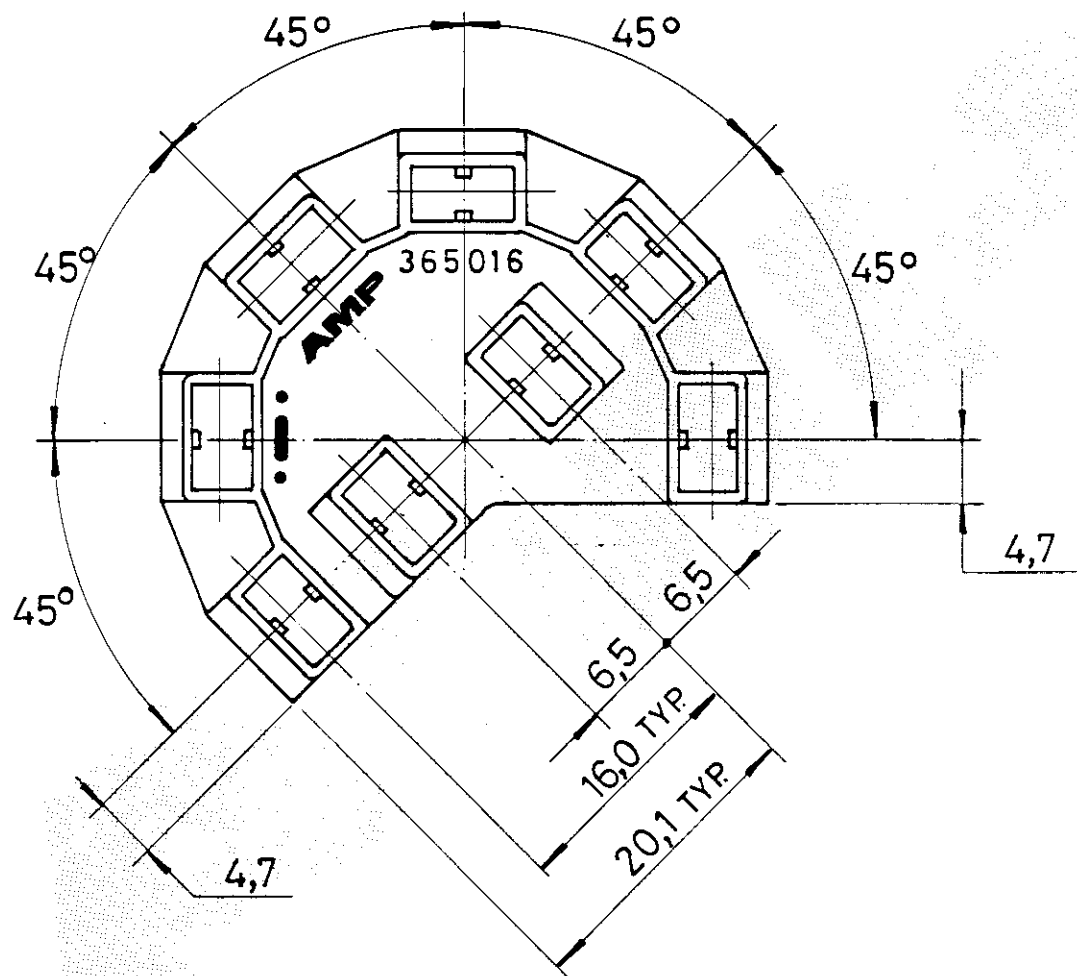
.19

© COPYRIGHT 1993

BY AMP INCORPORATED.

ALL RIGHTS RESERVED. TODOS LOS DERECHOS RESERVADOS.  
LOS PRODUCTOS AMP ESTAN CUBIERIOS POR PATENTES ACTUALES O PENDIENTES

| LOC | DIST | REVISIONS |     |                                |         |     |      |
|-----|------|-----------|-----|--------------------------------|---------|-----|------|
|     |      | F         | LTR | DESCRIPTION                    | DATE    | DWN | APVD |
|     |      |           |     | DESCRIPCION                    | FECHA   | DIB | APR  |
| AL  | 2    |           |     | E1 REVISED PER EC ES00-0015-98 | 22JAN98 | J.P | L.B  |
|     |      |           |     |                                |         |     |      |
|     |      |           |     |                                |         |     |      |



|   |   |                                      |   |                           |
|---|---|--------------------------------------|---|---------------------------|
| REMARKS<br>OBSERVACIONES  |   | BLACK/NEGRO                          | POLYAMIDE 6/6   | 365016-1                  |
| FINISH<br>ACABADO   |   | MATERIAL                             |   | PART NUMBER<br>REFERENCIA |
| <small>THIS DRAWING IS A CONTROLLED DOCUMENT FOR AMP INCORPORATED. IT IS SUBJECT TO CHANGE AND THE CONTROLLING ENGINEERING ORGANIZATION SHOULD BE CONTACTED FOR THE LATEST REVISION. ESTE PLANO ES UN DOCUMENTO CONTROLADO DE AMP INCORPORATED Y PUEDE SER MODIFICADO. PARA LA ULTIMA REVISION, CONTACTAR CON LA ORGANIZACION DE CONTROL DE INGENIERIA.</small> |   | DWN /DIB<br>J. PASCUAL 22JAN98       | <b>AMP</b> AMP Española, S.A.<br>Barcelona. Spain.                      |                           |
| DIMENSIONS:<br>DIMENSIONES<br>MM  | TOLERANCES UNLESS<br>OTHERWISE SPECIFIED:<br>TOLERANCIAS<br>POR OMISION   | CHK /COMP<br>L. BATILLO 22JAN98      | NAME<br>TITULO<br>8 POSN POSITIVE LOCK HSG<br>CAJA POSITIVE LOCK 8 VIAS |                           |
|   | 0 PLC /LUG ± GENERAL<br>1 PLC /LUG ± TOLERANCES<br>2 PLC /LUG ± ±0.5<br>3 PLC /LUG ±<br>PLC /LUG ± 1°<br>ANGLES /ANGULOS ± 1° | APVD /APR<br>L. BATILLO 22JAN98      | PRODUCT SPEC<br>ESPEC PRODUCTO  |                           |
|   |   | APPLICATION SPEC<br>ESPEC APLICACION |   | SIZE<br>TAM<br>A3         |
| MATERIAL<br>SEE TABLE   | FINISH<br>ACABADO<br>SEE TABLE  | WEIGHT<br>PESO<br>-                  | RESTRICTED TO<br>RESTRINGIDO A<br>-                                     |                           |
| CUSTOMER DRAWING /PLANO DE CLIENTE  |   | SCALE<br>ESCALANTS                   | SHEET<br>HOJA<br>1 OF 1   | REV<br>E1                 |